

## 2016 Flying star Xuan Kong annual analysis for year of the Yang Fire Monkey Bing Shen



### 2016 Feng Shui Flying Stars Xuan Kong Analysis

© Written by Daniel Hanna 2016

**Are you really prepared for 2016?**



**“The best gift you can give to someone is your time, because you're giving them something you can never get back.”**

On February 8<sup>th</sup> 2016 we enter into a new Chinese year (year 4714<sup>th</sup> within the Chinese calendar) the year of the Yang Fire Monkey, Bing Shen, and I am sure there are a few Oxen who will be glad to see the back of 2015. The 2016 Xuan Kong annual flying stars full evaluation is detailed as below and this year is very important as we have the very inauspicious #2 black Star (Ju Men) enter the centre and specialist cures will be needed more than ever as this star can cause problems with the stomach, digestive system, general sickness and problems with thought process and not wishing to sound too pessimistic but there is also a good chance of another recession with a stock market crash or correction.

I am a firm believer in the power of the mind and what you say can come true though I do feel a responsibility to share my thoughts especially as over the last 17 years we have always been accurate and we predicted with 100% accuracy the last recession back in 2007 although I am more than happy to be proved wrong with this one as I and most other people would rather this did not happen especially as it just feels we are coming out of the last one.

The last Yang Fire Monkey years (Bing Shen) were in 1956, 1896 and 1836 and each of the years were disastrous financially and politically and this year very special cures and enhancers are need more than ever.

In 2016 we have the #2 black Star (Ju Men) visit the centre earth palace and it is a very inauspicious star and can cause disasters relating to political stability throughout the world and predicted stock market crashes/corrections amongst many other problems. Yikes, that sounded really downbeat but I cannot say it any different and for those that know me, will know I always write as positively as possible but is better to be forewarned and prepared although you must do your own research as we may be Feng Shui experts we are not financial wizards.

For the past 18 years we have worked with tens of thousands of financial institutions and individuals making Feng Shui predictions on economics and are rarely wrong so please take care with investments in 2016. Please spend wisely and of course make sure you place your Feng Shui annual cures and enhancers as this will help lessen the effects and turn a bad year into a good one but of course we are not financial experts so we can only advise from a Feng Shui aspect so please use your own due diligence with your investments. Personally I am coming out of the stock market and investing in gold, silver and property and also in young mining companies as earth business like this are looking good in the yang fire Monkey year.

The last two Monkey years were in 1992 and 2004 which sadly saw Asia devastated by a tsunami killing 200,000 and a large earthquake taking lives in Turkey so the likelihood of another disaster in 2016 is highly likely especially with America and Russia, ISIS in Syria and Iraq in conflict already although the good news is from a Feng Shui aspect 2016 should see a resolution more long term which is what the world needs.

Fire Monkey years favour growth and creativity and a lot of progress will be made around the world this year with more developments concerning space and innovation taking place. A lot of focus will be placed on the US election during the year of the Yang Fire Monkey and there will be a lot of talk on national and foreign policy which will see a lot of promises. This year should see some dramatic currency instabilities and even possibilities of a market correction although this can be a year for growth and can see a lot of new technology and inventions as the year of the Monkey goes on.

In traditional and authentic Feng Shui, we use the solar calendar and on February 4<sup>th</sup> 2016 we have the #2 black Star (Ju Men) visit the centre earth palace that can cause bad luck, sickness, fire related incidents, political instability, contagious disease to do with the stomach or any illness caught airborne which will mean that 2016 will regrettably not be a steady year and potentially there could be many problems again in the Middle East. We will still experience hostility around the world like last year and predictions of natural disasters like earthquakes; landslides, floods and further worldwide disasters are highly likely along with scandals from large corporations.

Tai sui enters the southwest Kun palace and combined with the #8 star affects the Matriarch (eldest female). We last had a Yang Fire Monkey Bing Shen year was back in 1956 and this is actually a cycle of 60 years which will be found in a traditional "ten thousand year calendar" or our Tong Shu 2016 software. This year, there are more bad months than usual and it is very important that we treat the area for the year to lessen the negative effects of the monthly visiting stars in February, April, May, August, October, November 2016 and January 2017.

The #2 robbery star is trapped in the centre from 4<sup>th</sup> February 2016 and this can cause difficulties for a home and business and specialist cures and enhancers are needed and of course our annual [2016 cures and enhancers](#) kits allow for this, we have put together a very powerful kit where there are some very special talismans and charms included in the kits as standard as they are crucial to be placed this year. We have also published our [2016 Feng Shui guide](#) along with our [personal on-line report](#) which is filled with customised information to each different person.

Those born in the year of the Tiger could be affected by the conflicting influences of the year of the Monkey. Although the Tiger is the conflict animal of the Monkey year, those born in the year of the Tiger should be aware of potential difficulties they may encounter during the year and take extra care in whatever they do without taking unnecessary

<http://www.fengshuiweb.co.uk> Feng Shui Store, Michael Hanna  
email: [jo@fengshuiweb.co.uk](mailto:jo@fengshuiweb.co.uk) Tel: 0044 1296 399100 Fax: 0044 1296 582889

© Feng Shui Store 2016

risks. Regardless, if you follow the advice here you can avoid many problems, in our opinion so do not panic. It should be noted that there are five different types of each Chinese Animal (fire, water, wood, earth, metal) which depends on the year you were born and each different animal will have different predictions for the year ahead; you can find out more about this in our [2016 Feng Shui guide](#).

The degree of this influence varies from one person to another. One of the major considerations is the heavenly stem of the year in which one was born so if you were born in 1926 or 1986 which would be a Fire Tiger, the year will not be bad at all.

With regards to Xuan Kong flying stars we have the #5 yellow – representing bad luck, obstacles and misfortune, arriving in the northeast on February 4<sup>th</sup> 2016 along with Sui Po it is recommended that you place a salt water cure, Yi Fan Feng Shun protection and enhancement charm, six rod hollow metal wind chime and a row of six coins tied with red ribbon to dissipate this negative energy. The worst months will be February, April, May, August, October, November 2016 and January 2017. Another bad star # 2 black, symbolising sickness will arrive in the centre in 2016.

The traditional method to dissolve this 2 is to hang a row of six metal coins and a salt water cure in the centre of the home or business. The Grand Duke Tai sui this year is in the southwest, hence it is not favourable to “move earth” or make substantial construction work in this direction. The very negative robbery star #3 is a star of conflict and sadly this is located in the northwest and very special cures are needed this year to avoid problems; for the #3 star, we need to place a [Long Zhui Zhenzhu Coiled Dragon](#) statue along with a [Long Yu Quan Bi enhancer](#) in this area. There are many good and bad aspects to the year and you can find everything you need on this page to make sure you avoid many problems.

In 2016 the forecast for the Tiger will have its downsides during the year of the Yang Fire Monkey but please bear in mind that this is only one small influence in the big scheme of things in life. Things can turn out well despite this if you turn your attention to the monthly forecast on the energies of the space you occupy in your home and office in order to soften predicaments.

The positioning of the flying stars for the year has some good and bad areas in 2016 although we will still need to put the relevant [Annual Cures and enhancers](#) in place to negate these undesirable influences from being activated by visiting monthly unfavourable stars. The palaces to be aware of are the southwest, south, northeast, northwest and the centre. Avoidance and disturbance of these areas is always the best cure but in the majority of home and offices, we are not all blessed with the option to abandon a room for the year which is why we have included the appropriate annual cures and enhancers below for the Flying Stars of 2016 within the individual palaces making the areas manageable and usable.

Please do not fret if your bedroom, office or other important rooms are located in the southwest, south, northeast and northwest this year; if you begin to prepare placing your [2016 cures and enhancers kit](#) to ensure a trouble free year, and of course make sure you sign up for our free monthly newsletter so you are kept up to date with the monthly flying stars giving you even more control of your destiny. I would also advise making sure that you give your home and office a deep clean before the year of the Monkey begins and be sure to cleanse all of your old Feng Shui Cures and Enhancers to remove any negative Qi.

One other way is to make the most of the year of the Monkey is to use our annual [2016 Feng Shui Guide](#). This book is exceptional and has been skilfully and meticulously written and translated to ensure you a good year in 2016, year of the Yang Fire Monkey. This book contains over 450 pages helping you make 2016 as prosperous as it can be. Look for the links below for more details.

The 2016 annual flying stars Xuan Kong full analysis is detailed below for the year of the Yang Fire Monkey. Please do not get confused with solar (this is when you place Feng Shui cures – spring begins) and lunar (celebrate Chinese New Year) calendars, more on this below.

Over the last eighteen years around Chinese New Year (solar) we select a very valuable and crucial *Feng Shui cures and enhancer's kit* of little known Feng Shui cures and enhancers that can be placed at any time of the year although I would advise placing them earlier in the year for full effect. Many of these cures and enhancers we are using this year are very tightly held secrets in the world of Feng Shui and although many websites have tried to copy them from us, they **do not** get the ingredients right and this has been proven over the years to cause problems where the inscriptions and materials of the Cures have been changed or left out and have had adverse effects so please be careful that you make sure the company you get your Cures from are not just about the money and actually have a real passion for Feng Shui; we see far too many companies trying their hand at all different things and causing some very bad results.

The [2016 Feng Shui cures and enhancers annual kit](#) is not just some gimmicky cures put together; every one of these Cures are extremely powerful cures and enhancers that only the most advanced Feng Shui Masters and consultants throughout the world use and quite a few of the cures in our kits are one that many Feng Shui Masters charge thousands of pounds for. It does not matter how late in the year in 2016 you place your annual cures as we have many clients who have placed their Cures near the end of the year and still got great results and still receive orders in January for Cures for the current year.

The most influential and imperative cure and enhancer in 2016 is called a [Ch'u Men Chien Ts'ai Master cure and enhancer](#) and can only be used in Yang Fire Monkey (Bing Shen) years, the last time the [Ch'u Men Chien Ts'ai Master Cure](#) would have been used was in 1956 which was also a yang Fire Monkey year. This cure is needed to enhance and protect in 2016 especially for the female of a home or business. More on this later...

**If you have suffered from** illness, arguments, legal problems, bankruptcy, loss of wealth, health issues, relationship problems, accident, sore throat, skin problems, problems involving metal or just overall bad luck and you want to enhance your life and positive areas in 2016, **read on...**

[If you would like more details on the 2016 cures & enhancers kit please click here.](#)

## **Are you really prepared for what could take place in 2016?**

Finances could be a problem in 2016 as Yang Fire Monkey years can bring about financial instability but if you use the [Ch'u Men Chien Ts'ai](#) in the southwest and the [Sheng chi enhancer](#) in the southeast, in our opinion you can help change the good to bad when it comes to wealth and luck. There is going to be many good parts of 2016 to enjoy and if you follow the advice below, in our opinion you **CAN AVOID** many problems and this is

<http://www.fengshuiweb.co.uk> Feng Shui Store, Michael Hanna  
email: [jo@fengshuiweb.co.uk](mailto:jo@fengshuiweb.co.uk) Tel: 0044 1296 399100 Fax: 0044 1296 582889

© Feng Shui Store 2016

the reason why we introduced our annual **cures and enhancers kits** way back in 1998 to help you avoid many of the problems that come with certain Flying Stars.

There will be a great deal of Feng Shui Masters and consultants predicting disastrous events around homes and businesses all over the world that will take place in 2016 and general bad things for the year but despite what they are predicting, I am very much looking forward to 2016 and so should you; it is not as bad as they say and if you follow the advice below you can help avoid many problems.

### **Surely the 2016 cures and enhancers will make you exempt from any problems?**

If your bedroom is in the southwest, northwest, south or northeast and you do not exercise much, smoke, eat takeaways every night, drink heavily and overall a bit lazy and think that taking a vitamin C tablet at the end of the day will cancel all of the above from your body and mind, you are very much mistaken although I know you do not need me to tell you that.

Please do not think I am standing on my high horse being all righteous and perfect, far from it and I will once again be making changes to my lifestyle in 2016 and cutting out certain comfort foods and aiming to get some more exercise (the older i get the more i have to make, who can relate to this?); Last year I moved home about 5 miles from the office and said I would be cycling to work as much as possible; admittedly, this happened maybe around 40 days of the year although I have been walking a lot more lately in order to keep myself active and cut down on pollution. I am just giving you this advice as I have worked with thousands of clients throughout the world and **I know** the outcome.

I am not coming from a moral high ground here and as hard as this may sound, you will, I guarantee have some problems in 2016 although if you make the relevant changes this year, you can help avoid many of the potential problems and some of them will not be as bad as they could have been if you did not make any changes, placing just the Feng Shui cures and enhancers on their own will help immensely but you should also make lifestyle changes; finances will require care this year and if you think that you can place the cures and go and spend a big sum of money straight after, you are mistaken; Feng Shui cures work to protect, dissipate and enhance areas of your life.

If you would like a more precise plan of how to personally make the most of the year, after you have gone through the 2016 Annual Flying Stars, take a look at the [2016 Chinese animal Predictions](#) and the [2016 Tong Shu Almanac and Chinese Animal Book](#) or [maybe consider our Feng Shui report which gives you completely personalised details.](#)

As you may already know, we have given this Feng Shui advice to hundreds of thousands of different Feng Shui Masters, Practitioners, students and enthusiasts for over 17 years now and although we make many suggestions on cures and enhancers we do not always agree with many websites insisting that you have to spend hundreds of pounds each year on cures and enhancers as they are not always needed which is why we always advise different types of Cures so that those who cannot afford to purchase Cures and Enhancers can still benefit from simple changes such as colours and objects which I have written about below; the Feng shui Cures and Enhancers can make a huge difference this year and when used alongside colours, shapes and objects, the results can be fantastic although if you cannot afford these Cures there are still alternative options.

<http://www.fengshuiweb.co.uk> Feng Shui Store, Michael Hanna  
email: [jo@fengshuiweb.co.uk](mailto:jo@fengshuiweb.co.uk) Tel: 0044 1296 399100 Fax: 0044 1296 582889

© Feng Shui Store 2016



There are two products that I would strongly recommend to you for 2016 which, are our **2016 annual cures kit** and the world's most powerful and most widely used **Feng Shui 2016 software**, which has had over nine years in development, over 50 combined years Feng Shui experience and one year of beta testing with Feng Shui Master's, Practitioners and students from all over the world, Michael Hanna and the International Academy of Feng Shui have built the most powerful Feng Shui software available. This software is used by thousands of Feng Shui Master's. Practitioners, students and enthusiasts from **over 118** different countries throughout the world.

## **What should I do if I have last year's Cures and Enhancers kit?**

Every year, there are a lot of books and websites stating that you need to throw away or bury you old wind chimes, six coins, Pi Yao, wu lou, and Dragon Headed Tortoise etc from the previous year because they store so much negative energy and can cause problems although this is not necessary with most of these Cures if you cleanse them correctly before the Chinese new year begins

We have a lot of people email us asking what we personally do with our Feng Shui Cures and Enhancers at the end of each Chinese New Year, as nearly all websites and book state to dispose of the cures at the end of each year although our circumstances are very different to yours as we have thousands of these cure and enhancers in our warehouse. The cures that we have never changed or replaced is our Wu Lou which is now 26 years old, Pi Yao, three legged Toad God or Tsai Shen Yeh and we cleanse these at the end of every year to rid them of any negative Qi they have accumulated over the year. We change our wind chime and Pi Yao every year, the salt water cure we change without fail each year and I must admit the six Chinese coins tied in a row with red ribbon we always change and our Ba Gua mirror yearly as these are very bad to keep for too long and the reason why we will never sell plastic or metal Ba Gua mirrors as they do not age and store so much negative energy and will cause you many problems. You must never use a plastic or metal ba gua (pa kua). Certain Feng Shui Cures and Enhancers could last you a lifetime although there are some Cures and Enhancers that simply must be replaced every Chinese New Year.

To cleanse your Cures and Enhancers, ideally you should place outside under a full moon overnight or in direct sunlight for at least 4 hours and sprinkle with rock or normal salt. Make sure you rinse under water (don't forget to dry them) in the morning and you should place them in the appropriate areas as detailed below. This does not apply to the salt water cure, as these **MUST** be renewed every year without exception and must never be reused. As with all our products including the annual cures kits, they are all cleansed of negative energy and empowered with positive Sheng Ch'i energy, which makes them so much more effective.

As with all of our products including these annual cures kits, they are all cleansed of negative energy and empowered with positive Sheng Ch'i energy, which makes them so much more effective. Every single Cure and Enhancer that we sell is cleansed before leaving us and is handled with care when we send them out.

My advice to you is that even if you have our kit from seventeen years ago, you can carry on using it but please follow the advice above about cleansing and make sure the salt water cure (must replace) [six rod metal wind chime](#) and [six coins in a row tied](#) with red ribbon are replaced as these hold a lot of negative energy and can cause problems if kept for too long and disturbed. A general rule of thumb is to dispose of your Cures and Enhancers if they are chipped, broken or worn out. Please **never** throw your Wu Lou or

wealth ingot away as these are specially made for us and are the correct weight and size and I think they are a work of art and extremely powerful.

## **I cannot afford to purchase these cures or enhancers this year and/or my partner does not believe in Feng Shui?**

Usually, when someone first hears about Feng Shui, they usually think their home will have to look like a Chinese restaurant and cover their home in waving cats and large dragons covering half their wall to obtain Good Feng Shui which is certainly not the case. If you do not want to have six Chinese coins tied in a row with red ribbon or a Wu Lou beside the bed there is always an alternative. We have a lot of clients who place their 6 coins in a row behind a picture frame if they do not want it on display. For the northeast and centre of your home or office, you should use some good quality heavy metal ornaments during the year of the Monkey which should be round shapes as this represents metal but avoid menacing looking ornaments like metal knives or similar or anything that is aggressive looking with sharp corners. Although it's always best to have the Cures on display, I have many clients who place their 6 Chinese Coins tied in red ribbon behind a photo on the wall and still get tremendous results.

An alternative to a salt water cure in the northeast and centre in 2016 is a bowl of ultra clean, still water although this is not as powerful as the Salt Water Cure and needs special care so it does get stagnant or get covered in a layer of dust and bugs. The water must be kept squeaky clean otherwise it will cause you many problems. I do not always like to recommend using a bowl because they can get dirty especially if you live in a hot country and can cause many problems, so please be careful with this if you do not use the salt cure.

In the southwest and south, try to place some real quartz crystal from the 4<sup>th</sup> February 2016 or objects that are made from an earth material like ceramic and make sure they are square in shape as this represents earth, this will help enhance wealth and luck in your home or office in 2016. The most influential and imperative cure and enhancer in 2016 is called a [Ch'u Men Chien Ts'ai Master cure](#) this cure can only be used in Yang Fire Monkey years. The last time this powerful cure would have been used was in 1956 which was also a Yang Fire Monkey year. This cure is needed to enhance and protect the occupants of the home or office in 2016 especially for the female of a home or business. Take a look at our 2016 **annual cures kit** and be as imaginative as possible in creating your own kit.

We do not write these pages with so much free advice just to try and sell you something; if you look at all the information below you will find more alternatives for all the compass sectors without having to buy anything at all.

## **So what is flying star (Xuan Kong)?**

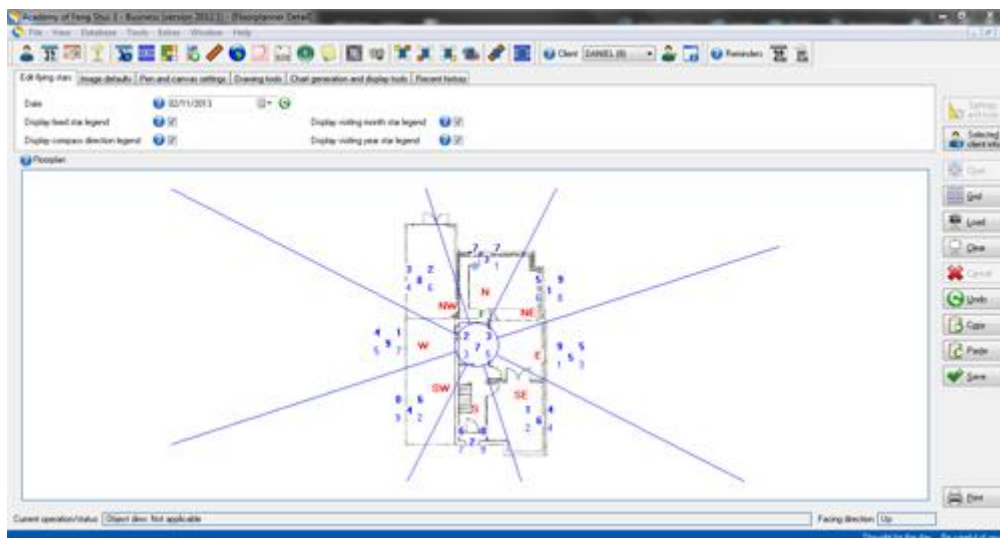
Flying star (Xuan Kong) Feng Shui is the most powerful form of Feng Shui that most professional Practitioners use; it has absolutely nothing to do with astrology. Flying Star Feng Shui is an analysis of the five elements, land formations and star combinations that occupy your building and is not just limited to the home; I have consulted on farms, restaurants, universities, complete high rise buildings and much more. Every Chinese New Year sees the annual stars change, bringing good and bad energy to different sectors of the property.

For the last 17 years, we have been giving accurate information on the Monthly and Annual Flying Stars offering free information on how you can weaken, neutralise or enhance the different areas of your home or office. Every single building throughout the world will have these changing annual stars and you will need to take into account their ability to cause harm ranging from, sickness, wealth problems, legal problems, gossip, relationship problems and just overall bad luck but the good side is that the Flying Stars will also bring auspicious good luck in wealth, health, romance, education and overall good well-being. Flying Stars will always have an effect whether people believe in them or not so please take this in to consideration for friends and family.

Unless an auspicious star is activated in the home or office, it is of no benefit to you so follow our advice carefully. Flying Star Feng Shui Is extremely powerful and can explain a lot about what is going on in a home; when I visit a client for a consultation, I make sure that they do not tell me anything about their life as the Flying Star Chart can tell me all about their life.

### **Sample of a Flying Star chart (natal chart)**

**Generated with our Professional Feng Shui software. This chart below does not just focus on annual and monthly stars but also your fixed stars that are hundreds of times more powerful.**



### **2016 is the 4714<sup>th</sup> year of the Chinese calendar.**

Due to time differences around the world, the first day of Spring will fall what appears to be a day early in some countries. In China, the solar calendar of the Bing Shen (Yang Fire Monkey) year starts on 4<sup>th</sup> February 2016 at 17:46. In GMT, the new solar year starts on 4<sup>th</sup> February 2016 at 09:46.

Just to confirm that if you live in the UK you would put your cures and enhancers in place on 4<sup>th</sup> February 2016 at 09:46 and in New York (USA) you would place your cures on 4<sup>th</sup> February 2016 at 04:46. The times were correct at time of writing 8<sup>th</sup> October 2015 but it is worth checking with <http://www.worldtimeserver.com>

- The first day of the Hsia (solar) calendar is February 4<sup>th</sup> 2016  
<http://www.fengshuiweb.co.uk> Feng Shui Store, Michael Hanna  
email: [jo@fengshuiweb.co.uk](mailto:jo@fengshuiweb.co.uk) Tel: 0044 1296 399100 Fax: 0044 1296 582889  
© Feng Shui Store 2016



- The Fire Monkey year ends February 3rd 2017.
- Chinese New Year falls on February 8th 2016.

## **Good travel directions in 2016 year of Monkey**

East, south and southeast

## **Lucky colours for 2016**

Shades of red, pink, burgundy, lilac and other fire colours

## **Further information on 2016:**

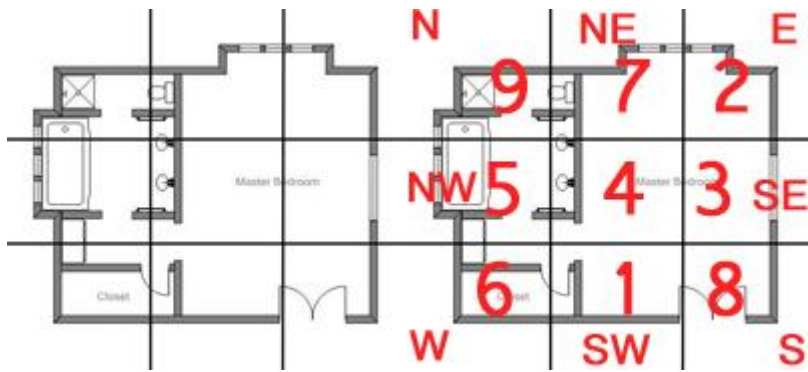
- The first day of the Hsia (solar) calendar is February 4th 2016, this is the day you would place your Feng Shui cures and enhancers.
- 2016 is a Yang Fire Monkey year (Bing Shen)
- Chinese New Year falls on February 8th 2016 (Lunar calendar). This is the date you celebrate the Chinese New Year with **Ang Pow**, fireworks **Talismans** etc and not the date you use to place cures and enhancers in Feng Shui. For more details on [2016 Chinese New Year click here.](#)

## **HOW TO FIND THE 2016 COMPASS SECTORS WITHIN YOUR HOME OR OFFICE**

The first thing you will need when planning the compass sectors of your home or office is a floor plan of your home or office. Ideally, you will want the original architects or estate agents plan but you can still hand draw this but it should be more or less to scale but don't worry if it is not, it will give you a good idea either way. Define all the interior walls that indicate the different rooms. If you have our Feng Shui Software, you can actually do your own floor plan within the software which makes it very easy.

**Secondly**, you will need to divide your floor plan into 9 equal grids like a tic tac toe board or wedges in proportion as shown below. Next, you need to know the compass direction of your home or office. If you need help with taking **compass readings** **please visit this page.**

After you have taken your compass readings; you will know which wall is in which direction and you can then overlay the year's Lo Shu grid (annual stars) according to the eight magnetic directions. So in 2016 you will see from below that the #5 star falls into the northeast area for this home, which in the majority of homes will fall in to either a bedroom, kitchen, study or living room and could cause problems if you do not place any cures. I know this will sound like a hard sell but our [Feng Shui software](#) does do everything for you ensuring that no mistakes are made.



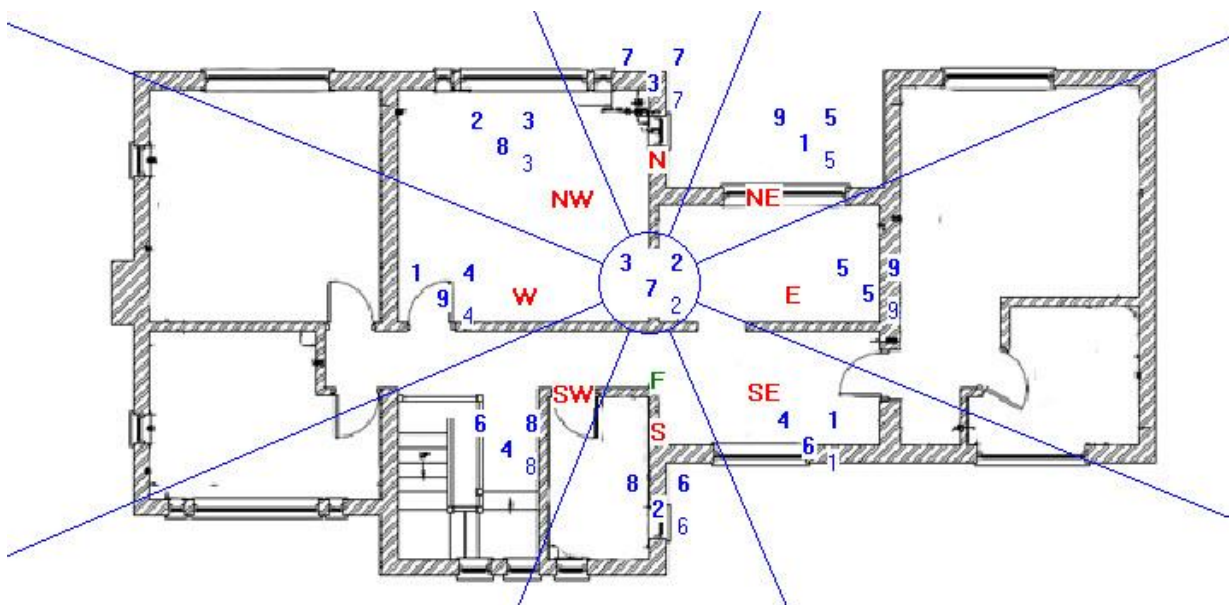
This chart below was created with our Feng Shui software Floor planner section.

- The top left number is called the mountain star and affects health and well-being of the occupants in the home.
- The top right number is called the facing star which affects wealth.
- The middle number is called the period number and comes from the year the home was built.
- The bottom right number is the 2016 flying star.

At a glance you can see where all the annual stars are along with mountain and facing etc and the reason why the software has become the industry standard in Feng Shui. The chart below is actually a very special chart called a "combination of ten with sitting" and requires careful analysis and the software explains in great details of how to get the best of every home of any age in any part of the world facing any direction.

This is why I do not want to know any personal details on a client that I consult for, as these numbers (along with land formations around the home) tell me everything about health, wealth, career and every part of their life.

**The chart below is for a house facing 181 degrees south 2 (Wu) built in 1999**



*"A house is made of bricks and beams. A home is made of hopes and dreams."*

## **South (142.5 - 217.5) is the location and direction of the Three Killings in 2016**

When at work, you may sit facing the south direction only if this is one of your personal good directions, if not, please do not sit with your back to the south in 2016 or you may find yourself coming in to contact with unscrupulous people working against you or you may encounter undue gossip and back stabbing during the year. A very powerful cure and enhancer for the south this year is to place a [Hotei Buddha](#). The Hotei can help avoid a lot of problems that can be brought on when the Three Killings visit the south. The [Hotei Buddha](#) really is a beautiful and powerful cure especially as it is one of the most traditional cures in Feng Shui.

## **Southwest is where Tai Sui (Grand Duke of Jupiter) resides in 2016**

Resides between 232.5° - 247.5° degrees southwest in 2016.

Like the Three Killings, Tai Sui does not like to be disturbed either. The effects of Tai Sui can be good or bad depending on the annual flying stars that coincide with its location.

The traditional Chinese method to appease Tai Sui is to place a [Guan Zhong Tai Sui plaque](#) to pay respect and appease the Deity. By paying respect to Grand Duke Jupiter, we can weaken or avoid the problems this can bring. This is really important this year and we have included the Guan Zhong Tai Sui Plaque in all our [annual cures and enhancers kits](#).

## **Sui Po is located in the Northeast in 2016 (The year breaker)**

Sui Po year breaker occupies the division directly opposite Tai Sui Grand Duke, which for 2016 is northeast. You should treat this area the same as the other annual afflictions with no ground-breaking work, renovations or any noisy activities. If disturbed this area can and normally will cause immediate health problems especially for the youngest male, so please be very careful. Traditionally to appease Sui Po in a Monkey year you need to display a Yi Fan Feng Shun talisman which we have included in all of our 2016 Cures and Enhancers Kits. If you have to carry out work or emergency repairs in the northeast place a six hollow metal rod wind chime between the buildings and where the work is being carried out and ideally you should contact a professional Feng Shui Master or Practitioner to select an auspicious date to start the work or consult our **Tong Shu date selection software**.

## **Water placement in 2016:**

As we entered period 8 (4th February 2004) the use of water outside is critical up until 2024, a pond/water feature positioned outside in the correct area can really work in your favour although you should not site a pond/water feature unless advised by professional Feng Shui consultant, you can however, safely place water outside in the southwest up until 2024.

## Outside water placement in 2016:

Outside water can be placed in the southwest or east as this is your primary and secondary wealth areas for the next twelve years. In 2016 water outside in the southwest is good but please only do so if you know what your natal chart (flying star chart) and you also have a good facing star this would make a very powerful combination for wealth. If you do not know the layout of your natal chart or do not know how to create one take a look at our [Feng Shui software](#) as it does all the work for you.

## Indoor water placement for 2016:

If you have to use indoor water the best area is in the southwest as this activates the auspicious #8 star and is also at home in the natural element of water in the east. Regardless though it is better to seek professional advice before placing any water feature inside or out as in Feng Shui it is the catalyst to good and bad so please take care and consult or use our software.

If you are using water inside or outside you must make sure the water is clean and flowing and never allow it to become stagnant as this can cause Qi to become Yin energy. Water is a very powerful enhancer and is the essence of Feng Shui (Shui meaning water) the qi is caught by the water and cleansed (providing the water is clean) and distributed throughout your property. If you look on our resource pages you will find more detailed information on water placement for 2016 and beyond.

Whilst the methods above are considered safe, there are many exceptions to the placement of water and as Master Practitioners and teachers we use many more methods of water placement for wealth, education and relationship, these methods whilst extremely powerful can only be used with expert guidance and a full analysis of your property and land formations, please [visit this link for more details](#) of a consultation or home/business visit.

## Salt water cure after just 4 weeks.



Every year we receive thousands of e-mails saying how the [salt water cure](#) changed the energy in their home for the better; the Salt Water Cure is a very powerful and little known cure and one that we have been using for over twenty years. You should use the salt water cure this year as of February 4th 2016 in the northeast & centre (DO NOT REUSE LAST YEARS SALT WATER CURE).

There are many exceptions to be made, the thing to remember with flying stars is, if you have a 5 yellow in a dining room and if it is an open plan home the 5 yellow's power can drift into any other part of the home, think of perfume, if you sprayed some in your

<http://www.fengshuiweb.co.uk> Feng Shui Store, Michael Hanna  
email: [jo@fengshuiweb.co.uk](mailto:jo@fengshuiweb.co.uk) Tel: 0044 1296 399100 Fax: 0044 1296 582889

© Feng Shui Store 2016

bedroom your partner may still be able to smell it downstairs because the smell goes into the air (Ch'i) and drifts around the home, so as general advice it is better to cure than leave to chance. Avoiding a room is good although I would still place the necessary cures and enhancers as this will weaken or rid the effects of the negative Flying Star and will lessen the chance of the influence spreading from the area.

## **How do I dispose of my old salt water cure?**

You should always change your salt water cure every year at the least. This is because they store an enormous amount of negative energy and moving it causes problems in all parts of a building. The best way to dispose of your old Salt Water Cure is to get a Tupperware type container (margarine tub etc) and place the entire contents which consist of salt, water, glass and coins into the container. You then close and seal the lid and throw straight into an outside bin. If you do not have a container to use, you can pour the water down an outside drain (one at the back of house that leads away from the building) and place the salt/glass and coins into a plastic bag and place in bin. Please do not try and recycle, it is not worth it, this is the main reason we sell ours so cheap to make sure people can easily and cheaply renew them. Please do not get tempted to salvage the I-Ching Chinese coins as these will have stored a lot of negative Qi throughout its use in your home or office. Last year I saw a few websites selling these for 4-5 times as much as us. As with all our products they are cleansed of all negative energy and empowered with positive energy and the coins also come from a good dynasty making them even more effective.

## **2016 Annual Flying Stars:**

The analysis of the annual flying stars can only be conducted from a general point of view offering indications as to the potential influences of the stars in the respective palaces for the year of the Monkey. How each area affects the wealth and health aspects of the residents depends vastly on the quality and combination of the 'facing' and 'sitting' stars of the property's natal chart and we cannot account for this in the report below.

If you have had a consultation by Master Michael, he will be able to advise you better for 2016 or if you use our Feng Shui software it will show you where all your wealth, relationship, career areas are as you could have at the very least two wealth areas and maybe as many as five. Please be sure to read all of the report below as you will need to make the most of 2016; it may appear that the year of the Monkey will not be a great year and there will certainly be obstacles to overcome but by reading the information below, you can avoid and weaken many of the problems that could come your way in 2016. If you would like to know more about what the year of the Monkey has in store for you on a more personal level, I would consider looking at the [2016 Feng Shui Guide](#) Or our [Feng Shui online report](#).

The southwest is very auspicious for wealth and if you placed a lottery ticket in the southwest in 2016, you will greatly increase your chances of winning. The lottery ticket below was created with an individual's own unique lottery numbers with our Feng Shui software and taken from their birth date and just by placing it in the southwest or southeast can increase the chances of a win tremendously. If you own the software you increase your chances even more as it calculates even more advanced formulas to tapping into wealth and good luck.





## **Kan 1 White ☵** 坎 In 2016, Kan trigram is in the southeast 東

In element Kan #1 is water. In the physical body, it is the ear. Internal organ it is the kidneys and it is also blood.

Kan water #1 (tan Lang) has flown into the southeast which inherently is a wood location for the year of the Monkey indicating that with water enhancing the wood of the southeast this influence present in the southeast will be good and bring new opportunities, gains in financial investments, academic achievements and scholarly pursuits when activated correctly. The intensity of these attributes will differ month to month according to the influence of the visiting monthly stars in the southeast. If you have a main door, bedroom, office or any other important room in the southeast of your home or office, this is very good news in the year of the Monkey.

To enhance academic study, you should encourage your child to study in the southeast part of their bedroom; you can also place a gold Tsai Shen Yeh statue as he protects wealth and also creates wealth in 2016. Tsai Shen Yeh must be placed in the southeast of whatever room is used as he is a protector and enhancer of wealth in 2016.

A good colour scheme to use in the southwest this year is blues; this colour can be introduced by means of bedding, throw-overs, lampshades, pillow covers, rugs etc.... If a bed is located in the southeast part of the room, remember to place a brass wu-lou beside the bed.

You should place a [Sheng Chi cure](#) and enhancer in the southeast this year to enhance the #1 wealth star. This important cure and enhancer is a very little known talisman charm and the reason it is called "Sheng Chi" is because it creates a cycle of energies and works in synergy with the earth's cosmic breath with a very special quartz crystal, Chinese i-ching coin, rice and small amount of earth soil taken from the land around you combined with a special engraving at the bottom of the metal vessel. This cure works in synergy with the master cure that it is placed in the southwest.

Another vital cure for the southeast this year is the [Long Baota Dragon Pagoda Protection talisman](#). The Protection talisman is an extremely powerful cure and enhancer for the Annual #1 star that flies in to the southeast in 2016. The southeast is a lovely area for wealth in the year of the Monkey and in order to make finances as prosperous as they

<http://www.fengshuiweb.co.uk> Feng Shui Store, Michael Hanna  
email: [jo@fengshuiweb.co.uk](mailto:jo@fengshuiweb.co.uk) Tel: 0044 1296 399100 Fax: 0044 1296 582889

© Feng Shui Store 2016

can be this year, we need a powerful metal Cure to enhance the #1 Annual water star. The Dragon Pagoda protection talisman has many different parts to the cure and when combined, this makes an extremely powerful Cure and enhancer for wealth, education, study and overall good luck cure when placed in the southeast in 2016.

If you own or work in a business that is involved with retail sales or a business that is a florist or similar such as a garden centre, your business can do very well this year if you activate the southeast area. Things can go especially well if you have a main door here during the year of the Monkey.



Curved furniture is very good in the southeast this year. A good colour scheme to use in the southeast this year is blues; this colour can be introduced in beddings, throw-over, lampshades, pillow covers etc... If a bed is located in this corner, the southeast part of the room, remember to place a brass wu-lou beside the bed.

Enhancement summary

- Place a [Sheng Chi Cure and Enhancer](#) in the southeast of your home or office
- A brass Wu-Lou would be good for a bedroom that falls into the southeast along with blue colours.
- When using furniture in the southeast, aim for something with a flowing design such as a vintage style bed or chair with a curve on the back
- If this is a study, place creative enhancements like displaying an abacus, calligraphy set, artist tools like canvas, brushes etc.

## **Kun 2 Black** ☷ 坤 In 2016, the Kun 2 Black (Ju Men) visits the centre 東南

The centre of any building in 2016 is not a very nice area at all and best left alone if possible, which is a lot easier said than done; the centre of my home is in the hallway and upstairs bathroom so not an easy area to avoid which is the reason why we write the advice on the cures and enhancers to be used each year as not everyone has the luxury of abandoning bedrooms or offices for a whole year.

Because it has flown into the centre palace for 2016, this can cause more problems than usual as the centre permeates around the rest of the eight palaces so it is very important to follow the advice below even if you do have the space to be able to leave the centre dormant for the year of the Monkey. In order to find the centre of your home or office, you would measure the length x breadth and divide by two, this may be an estimate depending on what type of home you have; you only need an approximate idea of where the centre is.

It is very awkward when a negative star flies into the centre of a building as it is usually an area that is open such as a hallway, living room or kitchen and hard to place cures. If the centre of your home is the middle of your dining room or lounge and you do not wish to have your cures on display, you can either place them behind a picture frame or decoration slightly out of sight or you could place them in a room upstairs. We receive a lot of emails from people saying that they do not wish to have their cures and enhancers on display which is fine as long as they still have open access to the air; what I mean by this is if they are behind an ornament, on a high shelf, behind a picture frame or under a bed it will still have a positive effect although it will be more effective in the open.

The best rooms to have in the centre in 2016 are rooms such as a bathroom, utility room, pantry, guest bedroom, cloakroom, dressing room, storage room or other room that is not used for long periods in the day.

If the centre of your home or office falls in a room such as a bedroom, office, lounge or other well-used room, this will inevitably activate its malicious effects.

The #2 black Annual Flying Star can cause problems related to the health of those under its influence bringing with it sickness, disease, bad luck, stress, stomach and digestive problems, bloated feeling, gossip, back stabbing, family disharmony and distress. This is especially so for people who are a Gua #1, 3 or 4. Check [on this page](#) if you do not know your Gua number eightmansions.htm or if you have our Feng Shui software you can calculate your Gua and best directions.

You need to place a salt water cure, Wu Lou if you have one and also six Chinese coins tied with red ribbon in the centre to weaken the malevolent effects of the #2 star. Other good traditional cures for the centre this year are a metal singing bowl and also place more round metal decorative objects (provided they are not menacing looking, round shape metal is good) to dissipate its negative influence in the centre of your home or room, the salt cure and six coins are the most important cures.

Tsai Shen Yeh (God of wealth) in a gold colour is very effective at not only reducing the bad earth but by also protecting your wealth for the year. Make sure there are no red items, bright lights or burning candles in this area. Do not worry if you have these colours in the centre from permanent decoration such as sofas or paint on the walls, just introduce colours such as white, silver, gold or copper in the way of a floor mat, cushions, throws, tablecloth or such like.

More importantly, do not decorate the centre of the home with red colour or triangle shape items and most important avoid burning candles or leaving bright fiery coloured lights on for too long during the year.

Avoidance of this area is the best cure although I know this is hard so try and follow the advice and try and aim to keep the centre as quiet as possible during the year of the Monkey.



If you happen to have a U shaped home built around a courtyard and have the door in the centre, please aim to avoid slamming this door and if possible, aim to use a different door to enter and leave the home this year.

### **Summary for the centre of a building in 2016:**

Do not activate the centre of your home or office with loud noises, aim to keep the centre quiet and at all costs, please avoid building work or refurbishment. Do not use the fire element or colours red, pink or purple. Keep doors closed. Place a Wu Lou, salt water cure and six coins here along with metal ornaments. Use colours such as white, silver, gold or copper. I will repeat this part, as it is so important, please keep the centre of your home quiet, and avoid redecoration and building work in 2016.

## Remedies

- Hang six Chinese coins tied in red ribbon.
- Place a salt water cure.
- You do not need all Dragons and bells, you can use any metal ornament as long as it is not sharp or aggressive looking, and believe it or not a good cure is a round metal dog bowl or one cure that I always advise is to place some heavy metal dumbbells.
- Place a Wu Lou and/or other metal ornaments to dissipate the negative earth.
- A metal singing bowl is very good as is a stainless steel Dog bowl.
- Avoid using red colour in this room and refrain from displaying triangle shape or fiery pictures.
- Avoid candles or bright lights at all costs.

## **Chen 3 Jade** 震 In 2016, the sound of Lu Chun #3 Jade can be heard in the northwest palace in 2016.

With the #3 Jade Annual Flying Star entering the northwest in 2016, beware of possible theft, arguments, disputes, hot tempers and legal problems.

In order to calm the effects of this star, you should try and keep the northwest of your home as quiet as possible and avoid building work or renovations.

To remedy the effects of this unfortunate star, you should use red decorative objects, candles, lamps and lights. A nice simple cure is a red or similar fire colour floor mat, rug or a table lamp with a red shade. You should avoid metal (metal colour is OK) to control this energy as this will aggravate it, restricting the beneficial influence brought by auspicious monthly stars in certain months and magnify its negative influence. If this is a room with a large metal bed or weight lifting equipment such as a home gym, please try to relocate this equipment to another room in 2016; if you are unable to do this, you should introduce red decoration in this room.

You should not have a water feature inside in this location during 2016 unless a professional Practitioner has advised you or you use our Feng Shui software.

Some clients of ours have pointed us towards books or websites stating that the #3 wood star is a good star in period 8 and in our opinion, it is still a very unpredictable star and you should not try and activate it unless you are qualified to do so or you have used our software. It will become more usable towards the later part of the 20-year period 8 cycle.

I have even seen websites and books recommending placing water here and I would strongly not recommend this unless you know what you are doing as incorrect placement of water in the northwest will invite arguments, divorce and legal problems without taking into account your land formations, period, mountain and water stars, please be careful.

Ensure that documents signed during the year are checked through thoroughly before committing oneself as most Chinese animals are at risk of making costly mistakes with paperwork this year although it does depend on their personal Chinese animal (e.g earth, metal, fire, wood, water Snake); for more information on this, take a look at our [2016 Feng shui Guide](#) .

The influence of a Chen 3 in Period 8 denotes possible arguments, disagreement and in extreme cases, this can result in lawsuits, either as a petitioner or a defendant. Either case there will be a loss of time, energy and wealth, so please be careful during 2016 especially if you have a main door in the northwest and if you can, try and use another door to enter and leave. You should also hang a Ba Gua mirror with a Chinese i-ching coin on the rear for added protection in the year of the Monkey in the northwest.

There may be bursts of irritability affecting those under this influence. If your office or bedroom is here, short temper and antagonistic are common characteristics in those affected by the #3.

A very important cure that you must use this year is a [coiled Dragon statue \(long zhui zhenzhu\)](#) as this will help to avoid legal issues, disputes and arguments; the Coiled Dragon will also promote fame and career; we have included the coiled Dragon statue in all of our [2016 Deluxe Cures and Enhancers kits](#). A vital cure for the northwest in 2016 is a [Long Yu Quan Bi](#) talisman which helps to protect wealth and avoid legal issues, arguments and disputes which is why we have included this standard in all our Annual cures and enhancers kits.

Do not take this affliction lightly. Do not disturb the ground of this area at all costs.

Northwest facing properties with front doors to the northwest must be careful not to allow the doors to slam and do not renovate or dig in the northwest for 2016.

To calm interactions:

- Place a light in the northwest if you have a choice, a lamp with a wooden stand and a peach/red shade is better.
- Do not hang wind chimes in this area of the house, especially metal wind chimes as it will worsen matters.
- Place a [Long Zhui Zhenzhu coiled Dragon](#) statue in the northwest of your home or office
- During hot summer months, make sure the fan is not located in the northwest.
- Take extra security measures for the whole home or business during 2016 and check smoke alarms.
- Place a [Long Yu Quan Bi Talisman](#) in the northwest for 2016
- Check through everything before signing documents if office is in the northwest.
- Try and keep this area quiet and do not disturb with loud noises.
- Try not to let children or noisy animals play in the northwest.
- Beware of backstabbing, as sometimes it is unseen and behind your back and also from someone you thought you knew quite well. If backstabbing occurs this year, focus on the northwest and make sure everything is as it should be

## **Sun 4 Green** ☰☱ In 2016, Sun 4 Green sits in the west 西北 of the Lo Shu square.

The Sun wood #4 star occupies the west palace for 2016, year of the Yang Fire Monkey and this is a conditional star although it is auspicious in Period 8 (2004 – 2024). The #4 annual star governs romance, travel, creative, academic and artistic talents, wisdom and intelligence as well as self-development. If you want to enhance this wonderful star, you would use a **yin** water feature or introduce some colours such as blue or black or you can place photos of you and your partner/family. If you like to use traditional Cures and Enhancers, this is a good area to have a pair of Mandarin Ducks; Dragon headed Tortoise.



A yin water feature is fresh still water, ideally indoor bamboo shoots growing in a small amount of water or fresh flowers in super clean water. When using a Yin water Cure in the west in 2016, you should use a blue, grey, charcoal or black vase. You can also use just a normal bowl of water, whatever you use, the water must be kept squeaky clean as if it becomes stagnant even slightly it will cause you relationship problems. The water **must not** be moving though unless a professional Feng Shui master has advised you or you use our Feng Shui software.

A little know and extremely powerful cure and enhancer in 2016 and one that can only be used in certain years is by placing a cure known as a [Xiang Xin Yuan wish and romance enhancer](#) in the west. This cure will enhance the #4 romance and literacy/career star and at the same time dissipate the inherent metal energy of the west, this really is a lovely cure and enhancer at the same time.

If the main door to your home or office is located in the west in 2016, this 4 star can bring both wanted and unwanted romantic opportunities to the household if the right cures are not put in place. Whether or not you wish to activate romantic opportunities this year, please read below. Having a door in the west alongside a [Xiang Xin Yuan wish and romance enhancer](#) can bring in new opportunities and lots of travel which is favoured in Monkey years and can bring fantastic results.

You should refrain from using both colours and elements that represent fire and/or metal. Fire and metal colours are: red, orange, pink, silver or white. If you already have these colours in the west this year, do not worry; just introduce colours such as blue or black in the way of a floor mat, cushions, tablecloth or such like.

As in every star, the #4 Green has a positive and negative aspect to its nature. Although this is a favourable annual star in 2016, it can also be affected by the presence of an unfavourable monthly star and when it does, it denotes betrayal, heartbreaks, scandals and humiliation in affairs of the heart so please be sure to check back here at the beginning of the month to read our Monthly Flying Star Analysis or if you have the [Academy software](#), check on the Flying Star detail section. You should treat the west as your relationship and creativity area for 2016 as it can be very good for you when activated correctly.

Summary for year: With the above cures and enhancers in place you should make good use of this area in the year of the Monkey, especially if you are looking to enhance relationships, mend troubled relations or enhance creativity, the west is a very good area for writers, artists, students and anyone that is related to the travel industry.



Avoid fire element and colours red, pink or purple in the west this year. Good colours are blue or black. Good place for an indoor Yin water feature (bamboo or fresh flowers, NOT MOVING WATER). If you wish to enhance areas of creativity and academic achievements, place or hang moving objects to enhance the Ch'i of this sector, do not use wind chimes though; blue wind spirals are good here. Keep area semi active with windows occasionally open. Spend time in the west if you want to enhance or repair romance, creativity or academic pursuits.

### **Cures and enhancers summary:**

- Use blue in your décor if this is your office or bedroom.

- For office and studies, place a task light and a crystal globe on the work desks. Blue items can be added to the desk e.g. blue paper, blue books etc
- Avoid displaying too much metal objects here especially large heavy ornaments.
- Fresh flowers or small pots of green leafy or flowering plants can be displayed in this spot of the house to lift the qi. Blue flowers are a good choice.
- If you have mandarin Ducks this is a good area to have them and any other symbols of romance like hugging couples etc.
- Place a [Xiang Xin Yuan wish and romance enhancer](#) in the west
- A Chinese or western calligraphy set is very good to place in the west for 2016 if you want to enhance creativity as an artist or writer or student, if you can place it close to where you study/write/paint.
- Place photos of loved ones or images of love to enhance relationships or attract new love. This can done with photos, paintings or statues, make sure there is always a pair in the image.
- For romance a Dragon headed Tortoise or Mandarin Ducks is very good

## The 5 Yellow In 2016, the annual 5 Yellow Lian Zhen star of tragedy is located in the northeast palace 西 .

Every piece of advice that I have given over the last sixteen years always comes from the heart and I try to make sure that those who do not use traditional Chinese cures like a salt water cure or six Chinese coins tied together with ribbon still receive advice for free, easy to source alternatives. For the northeast in 2016, you should use plenty of good quality metal and make sure that all your existing cure and enhancers have been cleansed before the Chinese New Year. I am paying particular attention this year to the northeast as this is where my parents main door is located, am I worried about it? Absolutely not; I will though make sure that no one in our home will use this door and all the cures I recommend will be put in place.

In 2016, we also have Sui Po the year breaker present in the northeast which will make the influence harder to control without the right cures in place. It is imperative that you do not undertake any form of noisy renovations or re-decorative work in this part of your house or office between February 4th 2016 and February 3rd 2017.

Do not to disturb its position here with noisy activities, renovations or maintenance work. Houses with their garden in the northeast should avoid disturbing the ground with major digging or building work. My parents had all their work to the main door carried out this year 2015 as in 2016 doing this work would have caused problems.

The 5 Yellow also called 'Wu Huang or Lian Zhen)' in Chinese, is one of the annual afflictions. This is a very volatile star with no gender and no trigram and is highly dangerous when disturbed so please apply care. When disturbed, its malevolent influence brings disaster, sickness, lawsuits and major loss of wealth. Do be careful with it. Stillness together with metal cures can keep its negative influences at bay.

In order to calm the influence of the 5 yellow, you should place a salt water cure, six rod wind chime, Wu Lou and six Chinese coins tied with red ribbon and also place more metal decorative objects (provided they are not menacing looking, round shape metal is good) to dissipate its negative.

Wherever the Five Yellow is, you must never disturb its position excessive noise such as digging, drilling or loud electronic equipment so please bear this in mind and be careful when you hang your metal six rod wind chime to control its influence in the northeast sector of your house. You should also place a Ba Gua mirror especially if you have a main door here, I will be renewing mine on February 4th without fail. Traditionally to

appease Sui Po in a Monkey year you need to display a Yi Fan Feng Shun talisman which we have included in all of our 2016 cures and enhancers Kits

When dealing with the Annual #5 star in the northeast, you must **not** place red objects, bright lights, candles or red coloured furnishing in this sector. Do not worry if you have these colours already just introduce colours white, silver, gold or copper in the way of a floor mat, cushions, throws, tablecloth or such like. You can also use dark blue or black if you prefer.

The ideal situation for the northeast is if you have a bathroom, cloakroom, en-suite, guest room or a large cupboard located here as these areas are not used much and therefore the negative power is not activated. I would still place the cures though regardless of what room is located in the northeast.

**Summary:** Do not activate the northeast with loud noises; instead, keep quiet and avoid at all costs building work or refurbishment. Do not use colours related to the element fire such as red, pink or purple. Keep doors closed in the northeast when not in use. Vital cures to place in the northeast are a six-rod wind chime, Wu Lou, salt water cure and six coins here along with metal ornaments. Use colours related to the element metal such as white, silver, gold or copper. I will repeat this part, as it is so important, please keep the northeast of your home quiet, avoid redecoration and building work in the northeast part of your home or office and when you hang your wind chime try not to make so much noise with hammers etc, don't worry about the noise the wind chime makes, this is all part of the cure, so when it is in place try and remember to knock it lightly a few times a day.

#### **To calm interactions:**

- Avoid playing loud music in the northeast of the home or room.
- Do not decorate your northeast area with red or earth colours this year. Grey, blue or white beddings and curtains are good colours to use temporarily for 2016.
- Place a salt water cure in the northeast of the building along with six Chinese coins tied in a row with red ribbon and six hollow metal rod wind chime.
- Display a Yi Fan Feng Shun talisman in the northeast to weaken the negative influence of the annual #5
- Move your bed to another corner of the room if possible even if it is a few feet away from the northeast corner, this way, you will avoid sleeping exactly in the northeast sector of the room and will weaken the influence slightly.
- Place a Brass Wu-Lou in the northeast corner of the room if this is your bedroom.
- Metal objects such as six Chinese metal coins tied in a red ribbon and/or a brass Dragon can be placed in this corner too. Avoid using red dragons.
- Do not place red objects, burning candles or triangular shaped furnishing in this sector.
- The most important advice I can give is to avoid disturbing this area at all costs. Any form of renovation that needs to be done should be delayed for another year.
- Tsai Shen Yeh (God of wealth) in a gold colour is very effective at not only reducing the bad earth but by also protecting your wealth for the year in the northeast.
- Replace or place a Ba Gua mirror if you have one in the northeast especially if you have your front door located here.
- If you have a main door in the northeast make sure you oil the hinges and try not to let it bang shut.

**Ch'ien 6 White** ☰乾 The star of Heaven Chien 6 White (Wu Qu) sits in the south 東北 palace in 2016.

<http://www.fengshuiweb.co.uk> Feng Shui Store, Michael Hanna  
email: [jo@fengshuiweb.co.uk](mailto:jo@fengshuiweb.co.uk) Tel: 0044 1296 399100 Fax: 0044 1296 582889

© Feng Shui Store 2016

# 6 White is a benevolent money star and as an annual star, its position in the south in 2016 is excellent for career, wealth, politicians, leaders and anyone involved in the property market, so for those with a main door, office/study in the south will benefit greatly. Please note that the three killings is also present in the south this year and if this area is untreated it will cause problems.

You must not undertake any form of noisy renovations or re-decorative work in the south part of your house or office between February 4th 2016 and February 3rd 2017. You should also not disturb the ground by digging holes, digging foundations or conduct any maintenance work with any noisy equipment in this area inside or outside your property or garden.

If you have a main door or office located in the south sector in 2016, you should try to use another entrance although this is not usually possible so please try to keep noise down when using the door. However, whilst 6 White represents attainment, if your bedroom falls in to the south in 2016, the #6 annual star can cause problems with the liver and/or legs. If your bedroom is located in the south, place some blue cloth like a rug or duvet cover to dissipate its energy.

A very powerful cure and enhancer for the south this year is to place a [Hotei Buddha](#). The Hotei can help avoid a lot of problems that can be brought on when the Three Killings visit the south. The [Hotei Buddha](#) really is a beautiful and powerful cure especially as it is one of the most traditional cures in Feng Shui.

### **Summary for year 2016:**

The south is a mixed area for 2016 and should be kept quiet or avoided if you have your main door or office located here; try to keep this quiet and calm by keeping your windows and doors closed and avoid any loud noise. Good colours are earth colours yellow. Place some real quartz crystal here or the hanging faceted sphere type; these are very good for activating the wealth and business side of this nice star.

### **Enhancers and cures if needed:**

- If this is your bedroom, a shade of blue or black in your furnishing or décor may help with health. A blue painting (not water scene) may also do.
- If you are a Gua #3 you should you should try and avoid this sector if possible, if not place a bowl of still clean yin water in the south.
- place a [Hotei Buddha](#) in the south this year to calm the effects of the Three Killings
- Avoid placing additional metal objects in this sector or room; however, a very good symbolic enhancer is a gold coloured wealth ingot, as it will enhance the wealth nature of the trigram Chi'en.
- Real quartz crystal is very good in the south as well as faceted crystal spheres.

## **Tui 7 Red 兌 The Lofty Wind of Tui (Po Jun) flies into the north 南 in 2016.**

The 7 red star is a negative annual flying star in Period 8. The trigram Tui is also known as 'Broken Soldier'. This is a fighting star. When combined with another untimely star, its negative nature denotes assault, deceit, violence and robbery. This year 2016 it falls into the water of the north.

#7 Red brings a high risk of burglary, deception, copyright theft, gossip and back stabbing in the north in 2016 and will need to be handled with care. This will be particularly so if the combination of the facing and sitting stars of this sector suggest such a scenario. If you have had a Feng Shui consultation or use our Feng Shui software it may not be as bad, as the facing and mountain stars may be auspicious.

Security should be a priority if you have a door or window in the north of your home or office and you should take the time to update security, smoke alarms and checking electrics. an important wealth enhancer and health protector for 2016 is the [Long Zhen Zhu Talisman](#) that must be placed in the north and is a stunning set of ten specially created auspicious I-Ching Coins based on the yang side with four Chinese characters and the yin side with a Dragon chasing a pearl (you must not use normal i-ching coins), the ten coins are hung from a red good luck pang chang mystic knot along with a Trigram Gua protection charm and tablet key with special colorations. Another vital cure is the Baohu Yizhi calabash amulet as this is a very powerful health and wealth enhancer and is included in all of our [deluxe 2016 Cures kits](#).

I know I have previously stated this although it is really important that you take extra security measures especially if you have a front, back or side door in the north sector. Make sure doors and windows are fastened securely before leaving the house. Do not display valuable items on windowsills, which may attract the interests of passers-by.

As we have the #7 annual star in the north this year, it really does pay to be wise to avoid taking too many risks for there may be unscrupulous people working against you. There are indications of misunderstandings, pressure and business rivalries that could also lead to losses.

The best advice I can give is check or install smoke alarms, check electrics and check the security of windows and doors.

The best remedy is to stay away from this sector or try to use it less frequently although this is usually easier said than done. If you cannot avoid using this room, you should use more blue in your decoration. Do not use anything of fire element or colours red to control it as this may aggravate it and don't forget that the negative influence of the monthly stars are usually of the earth elements.

Be careful of your colleagues stabbing you in the back. Sometimes this often goes unnoticed as it is done very secretly. One of the key features of having good Feng Shui is really being aware of potential problems and not just placing cures here and there to protect (talking myself out of sales as usual)

Summary: Keep area quiet and doors and windows kept closed. Good colours are blue or black. Avoid earth and fire colours and crystals.

### **Summary for year:**

If you have an office or door in the north in 2016, please be careful of people trying to deceive you, theft, arguments and loss of wealth, always look at the very small print and be careful as this star normally causes problems with people you know and thought you could trust. This applies to a lot of the Chinese Animals this year for more information on this, take a look at the [2016 Chinese Animal Predictions page here](#) or consider our [2016 Feng Shui Guide for a much more in depth synopsis](#).

It helps if you can do a natal chart of all the other flying stars in your home as there is much more you can do to protect yourself, if you know how to do a flying star chart it is



worth doing or maybe consider buying our specialist [Feng Shui software](#), it is worth every penny and can save you from many disasters, you will not find any better than this software as it not just tells you where the problems are it tells you how to correct them or enhance the good areas.

### Remedy:

- You should also use more blue in your decoration. You can introduce the colour with cushions, rugs, bed covers or doormats.
- Place a [Baohu Yizhi bottle gourd](#) for wealth and health protection
- Do not use anything of fire element or colours red to control it as this may aggravate it.
- Place a [Long Zhen Zhu talisman](#) in the north this year
- Avoid candles at all costs.
- Install or service smoke alarms and security systems.
- Do not hang metal wind chimes here.

## Ken 8 White 艮 has flown in to the southwest for 2016

The #8 White star is the governing flying star for the next nine years of the lower era of the sexagenarian cycle of the flying stars system and is located in the southwest 北. In 2016, Tai Sui is also located in the southwest and we are going to have to treat this area with care in order to make the most of it.

The #8 star can bring fame, wealth, romance, prestige and distinction in to others life when it flies in to the southwest although this year will require more care and the effects could be weakened or have an opposite effect if Tai Sui is disturbed

Do not place heavy metal in the southwest this year, as doing so will weaken the good earth and can cause more problems rather than enhance the area. Please do not take this affliction lightly in 2016, although the #8 star can bring a lot of positive attributes to those with bedrooms, offices and front doors in the southwest this year, if Tai Sui is disturbed by ground-breaking or loud noise, there could be problems which is why we have the most vital two cures in our cures and enhancers kits for the southwest this year which are the Chu Men Chien Tsai Master Cure to enhance all areas of life and the [Guan Zhong Tai Sui Plaque](#) which works in synergy with the Master Cure by appeasing Tai Sui so that the Master Cure can enhance the home or office. I can honestly say these are the two most vital cures for the southwest in the year of the Yang Fire Monkey which is why we have included both standard in all of our Annual Cures and Enhancers kits.

If you prefer to work with symbolic cures, quartz crystals, crystal balls or hanging faceted crystals are good for this southwest palace this year. The #8 star also governs relationships so a nice romance enhancer in the southwest this year is a pair of rose quartz double hearts or a pair of Mandarin Ducks.

One of the most powerful and important cures in 2016 is a Chu Men Chien Tsai Master Cure and enhancer. This cure is used to protect and enhance wealth and good luck in 2016 especially for the Matriarch (eldest female) or any female of a home or office and more so if you run a business from home although equally needed for males especially for wealth and is only known to a few specialist Feng Shui Grand Masters and in the old days and even now in Asia you would need to employ a specialist Feng Shui Grand Master to call at your home or business where they would come along with a specialist zhuanke (seal carver) who would spend many hours carving the secret inscriptions onto an eight sided (ba gua) earth plate ( Pai da di 牌大地 ) normally made from the finest quartz clear crystal, slate, polished stone, quartz or glass. The seal carver (zhuanke) was

<http://www.fengshuiweb.co.uk> Feng Shui Store, Michael Hanna  
email: [jo@fengshuiweb.co.uk](mailto:jo@fengshuiweb.co.uk) Tel: 0044 1296 399100 Fax: 0044 1296 582889

© Feng Shui Store 2016

traditionally hired by emperors and the very wealthy and was seen as a symbol of great wealth and power and this took many years of studying to perfect this specialist art form.

If you have a southwest facing property with your front doors to the southwest, you must be careful not to allow the doors to slam when entering or leaving and do not renovate or dig in this area for 2016. If you have an office or shop door in the southwest this year, I would recommend installing a soft close attachment if possible.

The traditional Chinese method to appease Tai Sui is to place a [Guan Zhong Tai Sui](#) plaque to pay respect and appease the Deity. By paying respect to Grand Duke of Jupiter, we can weaken or avoid the problems this can bring. This is really important this year and we have included the Tai Sui Plaque in all our [annual cures and enhancers kits](#).

This is a very strong wealth, success and romance area for 2016 so try and store your important financial papers here like pensions, stock portfolio etc in the southwest. If you use symbolic cures this is where you should place your three-legged Toad facing your Sheng Chi direction for wealth a pair of rose quartz crystal hearts for romance.

#### **To enhance:**

- Hang a faceted crystal sphere in this area of the house near the window or door. Hang it above head height and twist now and again.
- Place a [Guan Zhong Tai Sui Plaque](#) to appease the deity in the southwest this year
- The energies of the annual 8 can be activated by human activities. Use this room as frequently as possible unless you have received professional advice against it.
- Place a Chu Men Chien Tsai Master Cure in the southwest, especially if this is where your front door, office or bedroom is located
- The red three-legged toad can be placed here. Make sure the toad is facing into the house and not towards the door and the coin is never taken out of his mouth.
- If your bedroom is here, you can also place an amethyst or any crystal items in the southwest of the bedroom to further strengthen the earth element of the benevolent 8.
- This is also a good study area for children. Place a task light and a crystal globe on the desk to enhance concentration.
- A romance enhancer is a pair of rose quartz Mandarin Ducks in the southwest this year.
- Keep area active with open windows and doors (yang energy) although do not renovate or make loud noises this year.
- Keep the area outside and inside the southwest, southeast and south as clear, clutter free and open as possible, you need to let the auspicious Qi collect here and distribute inside and outside when this happens it is known as Ming Tang (明堂), this is a collection of Sheng Chi (auspicious energy)

### **Li 9 Purple 離 You Bi Li 9 Purple is found in the east 西南 in 2016**

The #9 purple annual star heralds celebrations so make hay while the sun shines if you have a main door in the east.

9 Purple is the star of future wealth and has an auspicious influence in Period 8. Career opportunities and promotions are probable and especially so if you have an office or

<http://www.fengshuiweb.co.uk> Feng Shui Store, Michael Hanna  
email: [jo@fengshuiweb.co.uk](mailto:jo@fengshuiweb.co.uk) Tel: 0044 1296 399100 Fax: 0044 1296 582889

© Feng Shui Store 2016

main door in the east in 2016. There is fame and acknowledgement, growth and improvement.

This is a good area in general especially for those in studies. If this is a family area (living, dining or a library), encourage children to study here as much as possible as this will greatly increase their opportunities.

Couples with a bedroom in this location will also enjoy good relationships throughout the year; in order to make the most of relationships this year, take a look at our [2016 Feng Shui Guide](#). There may also be a chance of producing intelligent children. If you want to enhance this further place a statue of Kwan Yin in the east part of your bedroom.

If you want to enhance fertility you can display peanuts in shells (groundnuts) or any seed products like black or red melon seeds (Gua zi). In Mandarin, peanuts are called 'hua-sheng' and for the Chinese this word is onomatopoeic in that the sound of it means the birth of many children. You should display them anywhere in the bedroom and of course be careful if anyone in the home suffers with nut allergies.

Although deemed as an auspicious star, the element of the annual #9 star in the east can strengthen the malevolent effects of visiting monthly stars #2 and #5 so please remember to hang a set of six chinese I-ching coins in a row on the wall here to weaken the undesirable influences of the monthly stars #2 and #5 which will visit in June and September 2016.

A traditional and powerful enhancer to use when the annual #9 visits the east is a [Shuang Zhi Shang Pi Yao](#) which can be very good for wealth, career and business. You should use a Pi Yao which has their left (yin) paw sitting on an Ingot Yuan Bao symbolising protecting your current wealth and attracting new wealth and good luck and to further create the perfect wealth enhancer and protector in 2016 and the other Pi Yao must have their right (yang) paw sitting on a wu lou calabash symbolising protection and avoiding bad luck in 2016.

### **Summary for year:**

Be aware of the negative influences during the months of June and September 2016.

To enhance:

- Healthy green leafy plants or blue flowering plants such as violets are good for this area.
- Fresh flowers displayed here will bring positive qi too.
- Place a [Shuang Zhi Shang Pi Yao](#) to enhance wealth, career and business luck
- Symbolic objects such as a gold abacus or six Chinese coins can be placed here all year round to enhance benevolent influence and at the same time dissipate the malevolent influence by the visiting monthly #2 and #5.
- Coin sword hung with its hilt facing the front door or window in this sector can help ward off any external poison arrows as well as weaken the effects of visiting monthly stars #2 and #5.

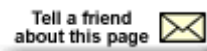
Spend as much time as you can reading this report, save it and print it to read at your leisure as it can save you from a lot of problems. You don't have to buy any cures and enhancers and I hope you agree I have always given you alternatives to the traditional cures and enhancers but if you do decide to buy a cures and enhancers kit you should read what some of our clients say about annual cures kits, not only do they offer you

protection they enhance the beneficial areas, click on the banner below to read some of the thousands we received over the years.



**Visit the pages below for further details on 2016 Chinese New Year etc.**

**[Chinese New Year 2016](#) \*\* [Checklist for Chinese New Year 2016](#) \*\* [How to make your own Ang Pow](#) \*\* [Chinese Talismans for 2016](#) \*\* [Chinese animal predictions for 2016](#) \*\* [Flying star Xuan Kong 2016](#) \*\* [Avoid the fury of the Grand Duke, three killing 2016](#) \*\* [Chinese New Year world time converter 2016](#) \*\* [2016 Cures and enhancers kits](#) \*\* [How to take a compass reading](#) \*\* [How to determine your facing direction](#) \*\* [Feng Shui software](#) \*\* [Feng Shui resource](#) \*\* [2016 Tong Shu Almanac Software](#) \*\* [Feng Shui Blog](#) \*\* [Chinese culture](#) \*\***



**Are you really prepared for 2016?**



We are more than happy to share our content; all you need to do is give us credit for our hard work and a link back to our website. You can download and save a printer friendly PDF file that can be emailed or use any of the vast amount of share button son the website, the more you share the better the Karma...!

© Feng Shui Store Daniel Hanna 2016

