

癸巳 Are you prepared for... **2013 Year of Yin Water Snake?**

2013 Flying Stars Analysis

© Written by Michael Hanna 2013



"You don't stop laughing because you grow old, you grow old because you stop laughing"

On February 4th 2013 we enter a new solar Chinese year (year 4711th in the Chinese calendar), the year of the Yin Water Snake (Gui Si). The last time we had a Yin Water Snake year was back in 1953 and this is a cycle of 60 which will be found in a traditional "ten thousand year calendar or our **Tong Shu 2013 software**.

The year of the water Snake will be another year of changes and Snake years normally bring changes in power to different countries bringing good and bad consequences. Again there will be many changes in the Middle East bringing a new regime in some areas that initially will seem very good but there is long road ahead to cement these changes for the better.

Regrettably 2013 will mean that finances will be tight again and the slightest problems the world over could bring the stock markets collapsing again and exceptional Feng Shui cures are needed in the year of the Snake more than ever.

Some Feng Shui Masters and Practitioners are predicting a very bad year because the annual stars fly back to their original Lo Shu map and double the effects in a negative way. We believe along with many other Masters that 2013 will not be that bad because as they have flown home so to speak they are less volatile because they will feel more at home although there are still many powerful annual cures and enhancers needed this year.

2013 could be a year of conflict for people born in the year of the Tiger or the Pig, particularly those born in the year of the Earth Tiger 1938 (age 66). Look after your health and do not overexert yourself. **For more information on your personal Chinese Animal for 2013 click here.**

Please do not start worrying if your bedroom or office are located in the east or southwest, just start preparing to place your 2013 cures and enhancers kit to help ensure a trouble free year, and of course make sure you sign up for our **free monthly newsletter** so you are kept up to date with the monthly flying stars giving you even more control of your destiny.

The 2013 annual flying stars Xuan Kong full analysis is detailed below. Please do not get confused with solar (this is when you place Feng Shui cures – spring begins) and lunar (celebrate Chinese New Year) calendars, more on this below.

In 2013 annual Feng Shui Cures and Enhancers are needed more than ever as the flying star #5 disaster star flies into the central palace which has no gender in the Lou Shu arrangement and this can cause financial problems and overall bad luck in the home or business and very special and little known cures and talismans area needed in 2013. Are you really prepared for the year of the Snake in 2013?

Over the last fourteen years around Chinese New Year (solar) we select a very valuable and indispensable Feng Shui cures and enhancer's kit of little known Feng Shui cures and enhancers that can be placed at any time of the year. In February 2013 the most inauspicious number 5 star visits the central palace and we will need some very powerful cures and enhancers.

Many of these cures and enhancers we are using in 2013 are very tightly held secrets and although many websites have tried to copy them from us, they **do not** get the ingredients right and this can actually cause more harm than good.

The 2013 Feng Shui cures and enhancers annual kit is not just some gimmicky cures put together; they are extremely powerful cures and enhancers that only the most advanced Feng Shui Masters and consultants throughout the world use and quite a few of the cures in our kits are one that many Feng Shui Masters charge thousands of pounds for. It does not matter how late in the year in 2013 you place your annual cures kit, we have many clients who have even placed them towards the end of the year and still get great results.

The most influential and imperative cure and enhancer in 2013 is called a hu shen fu Master cure, amulet and talisman and can only be used in Gui Si (yin water Snake) year, the last time this powerful cure would have been used was in 1953. This cure is needed to enhance, maintain and protect in 2013 especially for the female of a home or office and more so if you operate a business from home.

This cure is only known to a few specialist Feng Shui Masters and in olden days and even now in southeast Asia you would need to engage an proficient Feng Shui Master to call at your home or business and the Master would spend many hours engraving the secret writings onto an earth plate shaped as a heart (spearhead) of the finest quality slate, marble or similar earth element, which would then be placed in the northeast of your home or business and then setting the special thought form quartz crystals and i-ching coin placed on the heart earth plate would have a marking on it showing that the arrowhead must point towards the central heaven heart palace as this is where the #5 yellow star is located in 2013 and you must have protection against loss of wealth because we have the #5 five yellow disaster star visit the central heaven heart palace in 2013, with the potential to cause many wealth and bad luck problems. This powerful amulet would normally cost tens of thousands of pounds and obviously only available to the very rich which is still the case in many parts of the world and the reason why we create these powerful cures each year so all can afford them at a fraction of the cost.

The ancient Feng Shui masters claimed that when placing this powerful talisman you must hold the crystal and i-ching coin (not the heart earth plate) in your right hand and close your eyes and visualise exactly what you would like to achieve in your life. In other words create a wish list in your mind but you **MUST** be realistic and not start ordering a six pack or a full head of hair or a bank full of money, you must not be greedy and only positive and good thoughts so you cannot use it for revenge or anything bad and as the saying goes "be careful what you wish for" and remember that dreams can come true and this I speak through experience. These heart shaped earth plates have been especially engraved for us and you cannot just use a plate in a heart shape, it must have the talisman engraved on it combined with thought form crystal etc...

We only use the finest quality authentic handpicked quartz crystals and they have to be placed exactly as shown in the enclosed instructions with an auspicious dynasty Chinese I-ching coin.

Feng Shui was actually only available to the rich in the old days. The old Feng Shui Masters would use a piece of slate, stone or marble shaped as an arrow head (heart) and the point of the arrow would face into the centre of the home towards the trapped #5 disaster star and is by far the best cure and normally far too expensive for the average person and only the rich could afford to use them especially as they were hand made. We still have our earth plate individually hand cut and engraved for us and they really are works of art in my opinion and such a lovely cure to use in a yin water Snake year.

This is one of the most powerful and commanding cures and enhancers for wealth, health, relationships and protection in 2013 and because this cure is essential for wealth and protection we decided to include it standard in all our **2013 cures and enhancers kit**.

If you want to try and avoid wealth problems, sickness, arguments, bankruptcy, legal problems, loss of wealth, relationship problems, problems with the mouth, sore throat, chest problems, indigestion, skin problems, car accidents, accidents or any accidents involving metal and just overall bad luck or if you want to enhance the positive areas in 2013 **read on...**



If you would like more details on the 2013 cures & enhancers kit please click here.

Are you really prepared for 2013?

In 2013 we have the #5 *yellow Star* (Lian Zhen) visit the central palace and with the malicious #5 star being an inauspicious star, the fact that it has flown home to the central palace it brings a double bad energy and can cause many problems associated with finances and bad luck and some very powerful cures are needed in 2013 to help control the combination.

The predictions we made for 2012 and fourteen years before then were as usual 100% accurate and fortunately thousands of our clients have survived the further dip in the economy and many other problems not just in 2012 but over a decade before then, you can read the thousands of emails and Facebook comments from people who testify to our annual cures and protection annual Feng Shui kits.

In 2013 we have the #5 *yellow Star* fly home to the central earth palace that can cause conflict, contagious disease, arguments and it could be a year of uprising in western countries closer to home that have been subject to crippling taxes direct and indirect or anything to do with the authorities. The #5 *yellow Lian Zhen* is a star of bad luck, sickness, fire related incidents, contagious disease to do with the stomach or any illness

caught airborne; regrettably 2013 will not be an easy year for the world although there are many good parts to the year as well and we have entered an age where people are becoming more aware of their environment and also alternatives to a better life like Feng Shui, tai chi, qi gong etc. There should be some major advancement with alternative energy this year and technology on the whole will take many steps forward and this also includes new medicines especially do with those considered hard to cure like Cancer and Aids etc.

There are many other predictions for 2013 but as you know we don't like making the really negative aspects too in-depth as the power of the mind is extremely powerful and can manifest the problems. Where there is bad though there is always good and 2013 should be good for females and younger people taking positions of power and possibly the reason why we may see some rebellion with younger people taking power with better new ideas.

Those born in the year of the Pig/Boar and Tiger may be affected by the conflicting influences of the year of the yin water Snake. In saying this, we hope that those born in the year of the Pig/Boar and tiger are aware of potential difficulties they may encounter during the year 2013 and take extra care in whatever they do without taking excessive risks. The degree of influence varies from one person to another. One of the major considerations is the heavenly stem of the year in which one was born, so those who were born in 1971 (metal Pig/Boar) will have a rougher ride than those born in 1959 (earth Pig/Boar). For more information on your personal **Chinese Animal predictions for 2013** [click here](#).

The forecast for Pig/Boar may be inauspicious but please remember this is only one small influence in the big scheme of things in life. Things can turn out well despite this, if you turn your attention to the annual and monthly flying star forecast on the energies of the space you occupy in your home and office in order to reduce predicaments. Please do not start worrying if your bedroom, main door or office are located in the east and southwest, just start preparing to place your **2013 cures and enhancers kit** to ensure a trouble free year, and of course make sure you sign up for our **free Feng Shui monthly newsletter** so you are kept up to date with the monthly flying stars giving you even more control of your destiny.

Finances could be a problem in 2013 but if you use the Master cure in the northeast and the sheng chi enhancer in the south you can turn bad into good with regards to wealth and luck. There are many good aspects of 2013 and if you follow the advice below in our opinion you **CAN AVOID** many problems and this is the reason why we introduced our annual **cures and enhancers kits** back in 1999 so you can avoid many of the problems above. Despite what all the Feng Shui Masters and consultants are predicting I am very much looking forward to 2013 and so should you, it is not as bad as they say and if you follow the advice below you can help avoid many problems.

Surely the 2013 cures and enhancers will make you exempt from any problems?

If your bedroom is in the east, west or southwest and you are overweight, smoke, eat junk food daily, drank heavily and a bit of a couch potato and think that taking a vitamin C tablet at the end of the day will rejuvenate your body and mind, you are very much mistaken although I know you do not need me to tell you that.

I am not coming from a moral high ground here and as hard as this may sound, you will, I guarantee have problems in 2013 but if you make changes this year you will avoid many of those problems, placing just the cures and enhancers on their own will help immensely but you should also make lifestyle changes. Please do not think I am standing on my high horse being all righteous and perfect, far from it, I am just giving you this advice as I have worked with thousands of clients throughout the world and **I know** the outcome.

In 2013 we will be placing every single Feng Shui cure and enhancer that I talk about on these pages but I will also make some more lifestyle changes. I am 53 years young, if I am not in my car; I am on a train or a plane or sat at my desk. With my journeys all over the world I eat in a lot of hotels and restaurants and whilst they are always good quality it is still not always the right food for me with maybe a higher intake of salt or fat that I would normally have at home.

As you may know we have given this Feng Shui advice to hundreds of thousands of Feng Shui Masters, Practitioners, students and enthusiasts for 14 years now and although we make many suggestions on cures and enhancers we do not always agree with many websites insisting that you have to spend hundreds of pounds each year on cures and enhancers, they are simply not needed.

There are two products I do strongly recommend, which are, our **2013 annual cures kit** and the world's most powerful and most widely used all new **Feng Shui 2013 software**, with over eight years in development, over 50 combined years Feng Shui experience and one year of beta testing with Feng Shui Master's, Practitioners and students from all over the world, Michael Hanna and the International Academy of Feng Shui have built the most powerful Feng Shui software available. This software is used by thousands of Feng Shui Master's. Practitioners, students and enthusiasts from **over 118** different countries throughout the world.

"A Danger Foreseen - Is A Danger That Can Be Avoided"

What do I do with last year's cures & enhancer's kit?

Many books or websites will advise you to throw away your old annual cures and enhancers and bury your old six-rod wind chimes; six Chinese coins tied with red ribbon, Pi Yao, wu lou, ba gua mirror etc from the previous year because they store so much negative energy. This is not always necessary as long as you cleanse the items before replacing for the new Chinese year.

To cleanse them ideally you should place outside under a full moon overnight or in direct sunlight for at least 4 hours and sprinkle with rock or normal salt. Make sure you rinse under water (don't forget to dry them) in the morning and you should place them in the appropriate areas as detailed below. This does not apply to the salt water cure, as these **MUST** be **renewed** without fail every year without exception and must never be reused.

As with all our products including the annual cures kits, they are all cleansed of negative energy and empowered with positive Sheng Ch'i energy, which makes them so much more effective.

Many people write in asking if we personally change our cures and enhancers kit each year as nearly all websites and books say you should throw them away. Our circumstances are different to yours, we have thousands of these cures and enhancers in our warehouse but we have never changed our Wu Lou (22 years old) or Tsai Shen Yeh. We change our wind chime and Pi Yao every year, the salt water cure we change without fail each year and I must admit the six Chinese coins tied in a row with red ribbon we always change and our Ba Gua mirror yearly as these are very bad to keep for too long and the reason why we will never sell plastic or metal Ba Gua mirrors as they do not age and store so much negative energy and will cause you many problems. You must never use a plastic or metal ba gua (pa kua).

My advice is even if you have our kit from fourteen years ago, carry on using it but follow the advice above about cleansing and make sure the salt water cure (must replace) and maybe six coins are replaced as these hold a lot of negative energy. Please **never** throw your Wu Lou away these are specially made for us and are the correct weight and size and I think they are a work of art and extremely powerful.

I cannot afford these cures or enhancers and/or my partner does not believe in Feng Shui?

Your home or office does not have to look like a Chinese restaurant to have good Feng Shui, if you do not want to have six Chinese coins tied in a row with red ribbon or a Wu Lou beside the bed there are alternatives. For the southwest and centre of your home or office use good quality heavy metal ornaments, a good shape is round as this represents

metal but avoid menacing looking ornaments like metal knives or similar or anything that is aggressive looking with sharp corners. I have some clients who hide cures like a set of six Chinese coins tied together with ribbon hidden behind a picture or similar and still get great results.

An alternative to a salt water cure in the southwest and centre in 2013 although not as powerful is a bowl of ultra clean still water. The water must be kept squeaky clean though otherwise it will cause you many problems. I am not that keen on recommending using a bowl because they can get dirty especially if you live in a hot country and can cause many problems, so please be careful if you do not use the salt cure.

In the northeast and northwest place some real quartz crystal or objects that are made from an earth material like ceramic, this will help enhance wealth and luck. The most important cure and crucial in 2013 in the northeast of your home or business is to place a hearth shaped slate measuring between 101 – 109mm in size along with selected crystals and Chinese coin (try and make sure it comes from a good dynasty if you can). Take a look at our **annual cures kit** and be as imaginative as possible in creating your own kit.

We do not write these pages with so much free advice just to try and sell you something; if you look at all the information below you will find more alternatives for all the compass sectors without having to buy anything at all.

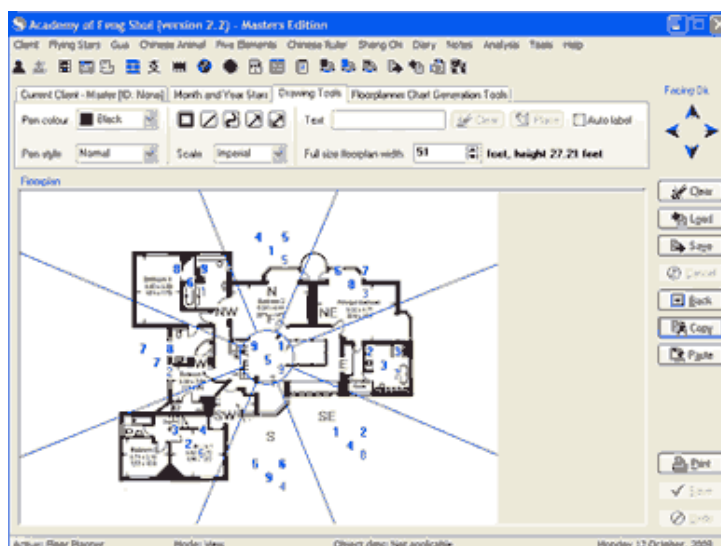
So what is flying star (Xuan Kong)?

Flying star (Xuan Kong) Feng Shui is the most powerful form that most professional Feng Shui Consultants use; it has absolutely nothing to do with astrology. It is an analysis of the five elements, land forms and star combinations that occupy your building. Each Chinese New Year in February these annual stars change, bringing good and bad energy and their effects are varied each year.

Every year and month we give free accurate information on how you can suppress or enhance the sectors of your home or office. Every building throughout the world will have these changing annual stars and you will need to take into account their ability to cause harm ranging from, sickness, wealth problems, legal problems, gossip, relationship problems and just overall bad luck and of course their ability to give auspicious good luck in wealth, health, romance, education and overall good well being. Unless a good star is activated it is of no benefit to you so follow our advice carefully.

Sample of a Flying Star chart (natal chart)

Generated with our Professional Feng Shui software. This chart below does not just focus on annual and monthly stars but also your fixed stars that are hundreds of times more powerful.



2013 is the 4711th year of the Chinese calendar.

In China, the solar calendar of the Gui Si (yin water Snake) year starts on 4th February 2013. You can find a [page on world times](#) for the solar and lunar Chinese New Years to avoid any confusion, **World times Chinese New Year**

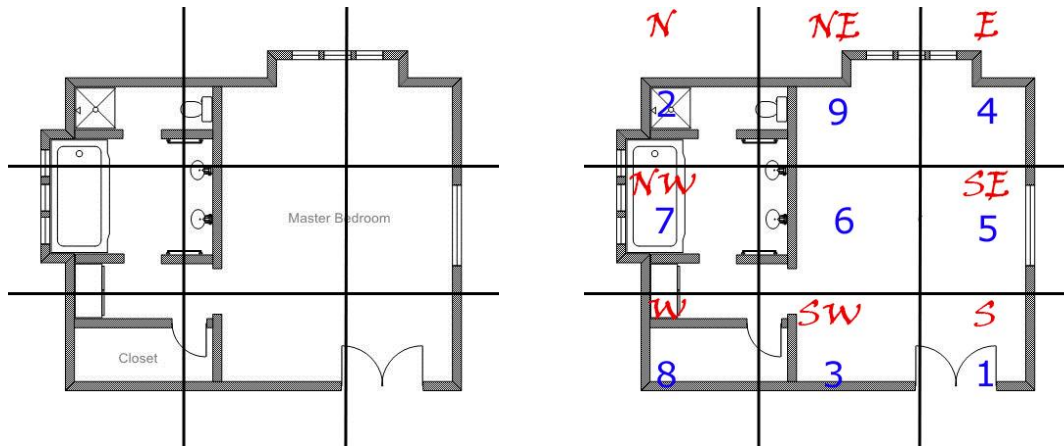
- The first day of the Hsia (solar) calendar is February 4th 2013, this is the day you would place your Feng Shui cures and enhancers.
- The Snake year ends February 3rd 2014
- 2013 is a Yin Water Snake year (Gui Si)
- Chinese New Year falls on February 10th 2013 (Lunar calendar). This is the date you celebrate the Chinese New Year with **Ang Pow**, fireworks **Talismans** etc and not the date you use to place cures and enhancers in Feng Shui. For more details on **2013 Chinese New Year** [click here](#).

HOW TO FIND THE 2013 COMPASS SECTORS WITHIN YOUR HOME OR OFFICE

Firstly, you need a floor plan of your home or office. This can be hand drawn but it should be more or less to scale but don't worry if it is not, it will give you a good idea either way. Define all the interior walls that indicate the different rooms. You can actually do your own floor plan within our Feng Shui software which makes it very easy.

Secondly, you need to divide your floor plan into 9 grids or wedges in proportion as shown below. Next, you need to know the compass direction of your home or office. If you need help taking **compass readings** [please visit this page](#).

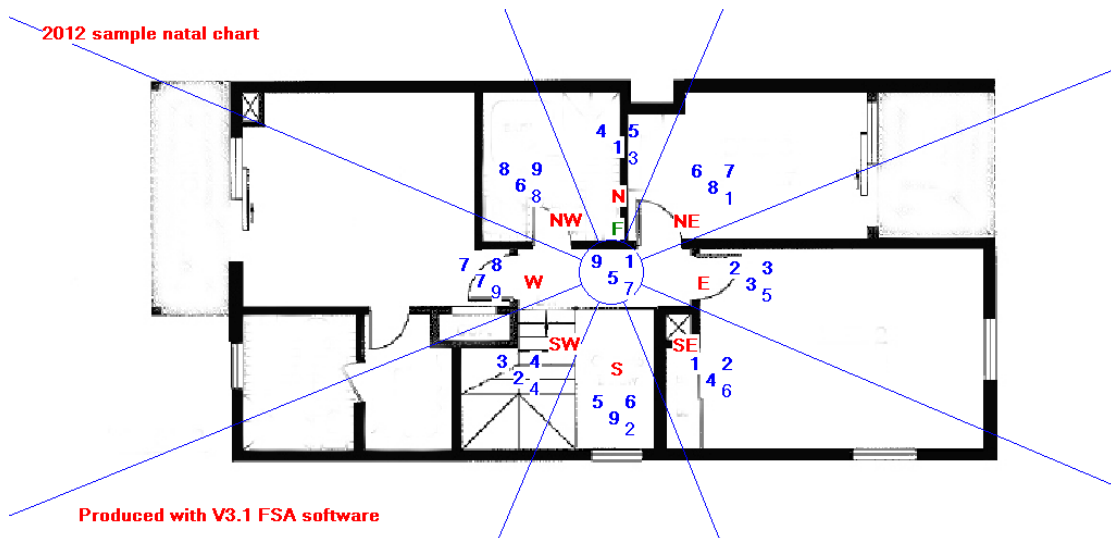
Once you have your compass readings; you will know which wall is in which direction and you can then overlay the year's Lo Shu grid (annual stars) according to the eight magnetic directions. So in 2013 you will see from below that the #5 star falls into the central area for this home, which like most homes is an important area and could cause problems if you do not place any cures.



The chart below is for a house facing 256 degrees north 2 (Tzu mountain) built in 1960.

This chart below was created with our **Feng Shui software**. The top left number is called the mountain star and affects health and well being, the top right number is called the facing star which affects wealth, and the middle number is called the period number and comes from the year the home was built. The bottom right number is the 2013 flying star. At a glance you can see where all the annual stars are along with mountain and facing etc and the reason why the software has become the industry standard in Feng Shui. The chart below is actually a very special chart called a "combination of ten with sitting" and requires careful analysis and the software explains in great details of how to get the best of every home of any age in any part of the world facing any direction.

This is why I do not want to know any personal details on a client that I consult for, as these numbers (along with land formations around the home) tell me everything about health, wealth, career and every part of their life.



"A small house will hold as much happiness as a large one. It is not about the size of your house, it is the love that fills the home"

The 2013 Annual Feng Shui Afflictions:

The Three Killings - is a direct translation from the Chinese 'San Sha'. This annual

affliction is mostly in the east (52.5° to 127.5°). It is imperative that you do not undertake any form of noisy renovations or re-decorative work in the east part of your house or office between February 4th 2013 and February 3rd 2014. Nor should you disturb the ground by digging holes, digging foundations or conduct any maintenance work with any noisy equipment in this area inside or outside your property or garden. Once disturbed, this affliction can bring about three types of misfortunes – financial loss, sickness and arguments. This is the worst out of all the annual afflictions and in our home and business we take this very seriously as in our 32 years' experience with Feng Shui we have seen some pretty nasty events from this energy when disturbed.

Apart from not disturbing its ground, there are two other rules you should follow regarding the Three Killings. Firstly, if you are moving your desk around this year, never sit with your back to this direction (east). Secondly, it is better to face (east) this direction, especially if this is one of your four favourable personal directions.

With the very inauspicious #3 Lu Chun star also visiting the east palace in 2013 it can cause bad luck and legal problems and needs very specific cures and of course when you combine all this destructive energy with the even more destructive three killings you need the best cure available in the east in 2013. You need a special cure – this special cure comes standard with all our 2013 annual cures and enhancers kits.

If your front door faces the east in 2013, place a pair of Fu Dogs just inside the house looking outwards as protective guardians for the year. You can also place a Ba Gua mirror outside in the east.

If you have to carry out work or emergency repairs in the east place a six hollow metal rod wind chime between the buildings and where the work is being carried out and ideally you should contact a professional Feng Shui Consultant to select an auspicious date to start the work or you can use our Tong Shu software.

Tai Sui (The Grand Duke of Jupiter) resides between 142.5° - 157.5° southeast. Do not take this affliction lightly. Do not disturb the ground in the southeast at all costs. Southeast facing properties with front doors to the southeast must be careful not to allow the doors to slam and do not renovate or dig in this part for 2013.

Sui Po (The year breaker)

Sui Po year breaker occupies the 15 degree mountain directly opposite Tai Sui Grand Duke, which for 2013 is northwest (322.5 – 337.5). You should treat this area with the same respect as the other annual afflictions with no groundbreaking work, renovations or any noisy activities. If disturbed this area can and normally cause immediate health problems especially for the elderly or sick so please be very careful. If you have to carry out work or emergency repairs in the northwest place a six hollow metal rod wind chime between the building and where the work is being carried out and ideally you should contact a professional consultant to select a favourable date to start the work.

The annual five yellow has flown to the centre in 2013 and because the centre has no gender this is not good and the reason why so many specialist cures are needed in 2013. It is highly recommended not to disturb the centre of your home or business with noisy activities, renovations or maintenance work. When disturbed, the Five Yellow can bring disaster, sickness, lawsuit and major loss of wealth so please be very careful in the centre in 2013 as it is very afflicted.

Please do not start worrying if your bedroom or office are located in the east or southeast, just start preparing to place your 2013 cures and enhancers kit to ensure a trouble free year, and of course make sure you sign up for our **free monthly newsletter** so you are kept up to date with the monthly flying stars giving you even more control of your destiny. To give you even better control use our advanced recently updated **Feng Shui 2013 software** as this gives advanced analysis of every home or office facing any direction in any part of the world.

How far do we take the advice we give?

We will also be placing all the 2013 cures in the southwest to help dissipate the negative energy that is here for the year. Am I concerned about the southwest this year? Not in the least, having good Feng Shui is actually being aware of potential dangers and making allowances and placing cures, you can and will avoid many problems. Last year in 2013 we had the same problems in our driveway entry to the office in the southeast and we sailed through with no real problems at all.

If you are moving furniture around this year, especially your work desk, it is vital that you must never sit facing this 15° sector (southeast). If you confront Tai Sui, you will experience defeat; demotion, loss and any venture will be met with obstacles. Instead, sit with your back to the southeast and he will support you. Avoidance is the best cure.

The traditional Chinese method is to place a Pi Yao in the northwest sector of your home or office facing southeast to appease Tai Sui. Use a compass and take the reading from the middle of the home to place the Pi Yao accurately to face the 15° radius southeast.

If you have to carry out work or emergency repairs in the southeast place a six hollow metal rod wind chime between the buildings and where the work is being carried out and ideally you should contact a professional Feng Shui expert to select a favourable date to start the work.

How far do we take this no digging or no noisy equipment?

What if your garden is in the southwest, east or southeast? Does this mean no cutting the lawn or cutting back the trees with a noisy hedge trimmer in 2013? Of course you have to do these jobs and if you cannot avoid building work or digging, use the following rules to reduce any harm that may result. Place a six-rod metal wind chime between your house and building work whilst the work is being done.

- Start trimming or mowing from a different corner of the garden. Let us say your garden is in the east of the property. You should remember to start your garden work from the northeast or north corner as this carries an auspicious energy in 2013.
- The simple thing to remember is **AVOID** doing heavy work here and no digging or breaking ground, I have seen too many times some nasty repercussions from disturbing these afflictions in a year.

2013 Annual Flying Stars:

The analysis of the annual flying stars can only be conducted from a general point of view offering indications as to the potential influences of the stars in the respective palaces for the year of the Snake.

How each area affects the wealth and health aspects of the residents depends greatly on the quality and combination of the 'facing' and 'sitting' stars of the property's natal chart. If you have had a consultation by Master Michael he will be able to advise you better for 2013 or if you use our Feng Shui software it will show you where all your wealth, relationship, career areas are as you could have at the very least two wealth areas and maybe as many as five.

Please make sure you read all of the report below as you will need to make the most of 2013, it may appear that 2013 will not be a great year but believe me just following this advice can make 2013 year of the Snake a great year. The northwest and north are very auspicious and if you placed a lottery ticket in the northwest or north you will greatly increase your chances. The lottery ticket below was created with an individual's own unique lottery numbers with our Feng Shui software and taken from their birth date and just by placing it in the west or northeast can increase the chances of a win tremendously, and if you own the software you increase your chances even more as it calculates even more advanced formulas to tapping into wealth and good luck.



Kan 1 White ☵ 坎 In 2013, Kan (Tang Lang) trigram flies comfortably into the north.

Kan #1 is a water element. In the physical body it is the ear. Internal organ it is the kidneys and it is also blood. It also affects career and overall luck. In 2013 it is a lovely timely star and is combined with the inherent water energy of the north and whilst very good it still needs attention.

Kan water #1 (tang Lang) has flown into the north Kan location in 2013 and the north is a water energy and from a five element aspect this is considered a comfortable association with water sitting water, in my opinion and also experience this combination in period 8 can bring amazing results if the right cures and enhancers are applied.

Although the inherent water energy of the double #1 Tang Lang can cause problems relating to bowels, kidney, bladder and liver therefore cures are needed to protect and enhance finances and to help protect health. This combination can be good for the middle son or male especially with regards to romance/career and finances although they need to take care of relationships in 2013 especially if they have a bedroom in the north as the double #1 stars can cause love affairs and certain cures are needed like the four Buddha's Xing Wang although best not place in a bedroom.

Whilst the energy is very good in the north a special enhancer is needed in the north to enhance and protect your wealth and business, especially for the middle male as the north is a Kan trigram which can affect the bowels, kidney, bladder and liver so caution and cures are needed for those who are overweight or just unhealthy. Check outside the north of your home for any poison arrows pointing towards it, if there are hang a ba gua mirror outside pointing towards the offending object. If you have a bedroom in the north introduce some blues or black and avoid fire colours like reds, pink or purple and try not to use candles.

If you activate certain areas of the home it can bring in new opportunities, gains in financial investments, academic success and also romance and relationships as peach blossom is very good in 2013 although be very careful if you are in a relationship with a bedroom in the north as it can bring extra marital relationships. The strength of these characteristics will differ in varying degrees according to the effect of the visiting monthly flying stars and worth checking back with us each month to see how the monthly stars are doing and what precautions you need to take.

If the north is a bedroom, office, study lounge or other important room you should place your Xing Wang four Buddha's of prosperity and because the #1 star falls in the north which is inherently a #1 star as well you have double the luck and it must not only be activated with these four wealth enhancing and wealth protection Buddha's but they must be made from an earth (brown) and metal (silver) element colour which of course ours

have and they look stunning. Please remember not to place these Buddha's in a used bedroom and better placed on the ground floor in the north.

This is a very traditional and authentic enhancer for the #1 flying star that occupies the north palace in 2013.

Blues, black, grey or charcoal would be a good colour scheme for a room in the north in 2013. These colours can also be used in bedding, throw-overs, lampshades, pillow covers etc. If you have a bed located in this area, remember to place a brass wu-lou beside the bed. Avoid fire colours like red, pink, purple, orange, lilac etc and also avoid candles at all costs.

Businesses' that deal with investments, trading, jewellery or on-line retailing can expect better times if they have an office or main door in the north and a good enhancer for this type of business is the four Buddha's.

If this combination falls into an office, you should try to keep the land outside your property open and clear; it is also beneficial to you if you keep windows and doors open as much as possible whenever security and climate will allow you to do so.

Summary for year 2013:

The best months for the north are March, May, August, October and December.

Take extra care in the months of February, April, June and July and check back for further analysis of these months.

You can also place a moving (yang) water feature in the north in 2013 to get a better idea of whether to use water for wealth, it is a good idea to create a flying star natal chart of your home and then decide, or if you want the easy way look at our **2013 Feng Shui software** as this not only calculates it also advises on placement for wealth, health, relationships and every other aspect.

Enhancement summary and advice.

- A brass Wu-Lou and/or a set of six Chinese coins tied with red ribbon is advisable for a bedroom that falls into the north along with all shades of blue, black, grey or charcoal colours. This is especially so if you are not in good health and if you cannot buy a wu lou place a heavy round metal object close to your bed.
- Place your Xing Wang four Buddha's of prosperity in the north. Go to our **2013 cures kit** for details to see what they look like.
- Avoid candles or fire colours like red, pink, purple, orange or burgundy in the north in 2013, blues, blacks, grey or charcoal are good colours to use.
- Metal objects are good to place in the north in 2013.
- Place creative enhancements like displaying an abacus, calligraphy set, artist tools like canvas, brushes etc.
- Naturally not as powerful but round metal shapes are an alternative to using Feng Shui items but avoid sharp or menacing looking metal objects.

Kun 2 Black 坤 坤 the Kun 2 Black (Ju Men) visits the southwest in 2013

The southwest in 2013 is not a great area at all but with the placement of the cures and enhancers we can dissipate the energy from the #2 star. The combination of the #2 star in the southwest is bad earth residing in the southwest Kun area making it twice as bad and

can cause many problems especially for the matriarch eldest female of the home or business.

If your bedroom, office, lounge, main door or other important room is located in the southwest and you are unable to move out please read this section very carefully.

Try and keep the southwest of your home or office as quiet as possible and avoid building work or renovations in 2013.

If the southwest of your home or office is a bathroom, utility room, guest bedroom or other less important room do not panic this is great news for you, and for my home this is my en-suite bedroom which is good but on the ground floor this is part of my living room which is used often so I will be placing all cures in 2013 and I know once I have placed my cures and enhancers it should not cause us any problems.

As I said we have the #2 star visiting the southwest Kun palace and when we see 2 & 2 together the potential of bad luck is strong and this can cause problems related to chronic illnesses and problems with the skin.

This star affects the health of those under its influence bringing with it wealth problems, sickness, disease, bad luck, stress, stomach and digestive problems, bloated feeling, gossip, back stabbing, family harmony and distress. This is especially so for people who are a Gua #1, 3 or 4. Check on this page if you do not know your Gua number [eightmansions.htm](#) or if you have our software you can calculate your Gua and best directions.

The 2 Black in Period 8 is an untimely star and hence its influence will be of an undesirable nature. You must place a salt water cure and six Chinese coins tied with red ribbon, metal singing bowl and also place more round metal decorative objects (provided they are not menacing looking, round shape metal is good) to dissipate its negative influence in the southwest corner of your home or room. Avoid triangular or sharp shapes in this area.

The most important cures to place in 2013 in the southwest are the salt water cure, metal wu lou and six Chinese coins tied with red ribbon and why they come standard in all our **2013 cures and enhancers kit**.

A very powerful and commanding and much needed cure in 2013 is a cure to bridge the gap as the elements are in conflict between earth and water. The traditional cure is placing a Wu Lou Xiu Hu protection amulet in the shape of a wu lou but it must be made of real metal. This is an important cure especially for those with an important room in the southwest.

Make sure there are no red items, bright lights or burning candles in this area. Do not worry if you have these colours already just introduce colours like white, silver, gold or copper in the way of a floor mat, cushions, throws, tablecloth or such like. If you have a main door that falls in southwest in 2013 you would be advised to hang a Ba Gua mirror outside to deflect the negative energy.

Ladies expecting should try and avoid using a bedroom if it is located in the southwest. If there is no choice, try to use a good (northeast, north or south) sector of the room and install the needed cures. You should also sleep with the crown of your head in your personal Tien Yi direction. Those who spend a lot of time in the southwest should be careful of what they eat in 2013 and a good time to get a check up on your bloods as this combination can also cause problems relating to the blood.

If you cannot avoid using this room or this corner of the room, place a brass Dragon beside your bed. The brass Dragon gives elemental support to the southwest in 2013 and also symbolises good health and dissipates the negative energy of the #2 star. Because the southwest is associated with the eldest female, the home or business can be affected so make sure if you sleep, work or spends a lot of time in the southwest all cures are

placed. Be very careful in February, April, June, September and November 2013 as the southwest is at its worst then.

More importantly, do not decorate the southwest room with red fire colours or triangle shapes items and most important avoid burning candles or leaving bright fiery coloured lights on for too long during the year.

Good news for those who are Gua 9 or 2 as this combination whilst on the whole is very bad it can be good for them in wealth and career, you will still need to place the recommended cures as detailed here but the effects of the #2 black will not be bad for you and can even give you positive results.

Summary for year 2013:

Do not activate this area with loud noises, keep it quiet and avoid building work or refurbishment although it is not too bad. Do not use the fire element or colours red, pink or purple. Keep doors closed. Place a Brass Dragon, salt water cure, gold Toad, wealth ingot and six coins here along with metal ornaments. Use colours white, silver, gold or copper.

Remedies

- Hang six Chinese coins tied in red ribbon.
- Place a salt water cure.
- Place a Xiu Hu protection amulet in the shape of a wu lou
- You can use any metal ornament as long as it is not sharp or aggressive looking, and believe it or not a good cure is a round metal dog bowl or weight lifters weights.
- A brass wealth ingot is good for protecting wealth.
- A metal singing bowl is very good as is a stainless steel Dog bowl.
- Avoid using red fire colours in this room and refrain from displaying triangle shape or fiery pictures.
- Avoid candles or bright lights at all costs. Check or upgrade smoke alarms and other fire prevention methods.
- Place a Ba Gua mirror in the southwest outside only and use a wealth protection Ba Gua mirror.
- Not as powerful but round metal shapes are an alternative to using Feng Shui items but avoid sharp or menacing looking metal objects.

Chen 3 Jade ☳ 震 the sound of Lu Chun #3 Jade is making a lot of noise in the east palace in 2013 and this is not a nice combination at all.

The east along with the southwest in 2013 is probably one of the most afflicted and special cures are needed as this combination of flying stars is known as "bian qi" and hard to control, in fact you cannot control it, you have to dissipate and weaken its energy and this is done with a Temple Lion protection talisman tablet and because this cure is essential in 2013 we have included it in all our **2013 cures and enhancers kit**.

You must be aware of possible theft, arguments, disputes, hot tempers, loss of wealth and legal problems especially if you have a main door or important room in the east. Those of

you with an eldest son also need to take note but do not start worrying, with the cures and enhancers in place you will avoid many problems. When you combine all this destructive energy with the even more destructive three killings you need the best cure available in the east in 2013. You need a special cure – this special cure comes standard with all our 2013 annual cures and enhancers kits.

Try and keep the east of your home as quiet as possible and avoid building work or renovations in 2013.

To remedy its effects use red decorative objects, candles, lamps and lights. A nice simple cure is a red, pink, purple, burgundy (fire colour) floor mat or a table lamp with a red shade. Do not use metal (metal colour is OK) to control this energy for you will aggravate it, restricting the beneficial influence brought by auspicious monthly stars in certain months and magnify its negative influence.

Do not have a water feature inside here unless a professional Feng Shui Practitioner has advised you.

Some books or websites you may have read will tell you the #3 wood star can be a good star in period 8 (2004 – 2024), in our opinion it is still an unpredictable star and you should not try and activate it unless you are qualified to do so or you have used our Feng Shui software. It will become more usable towards the mid to later part of the 20-year period 8 cycle.

I have seen a couple of websites and books even recommending placing water here for the annual #3 star, do this and you could invite arguments, wealth problems, divorce and legal problems, without taking into account your land formations, period, mountain and water stars, please be very careful.

I am not saying these people are wrong to recommend placing water; I am saying that you should take into account the bigger picture before using such a powerful enhancer like water on a known unbalanced star at this particular time in the twenty year cycle. I have used water many times on this star with good results but have also used water and got disastrous results, it really depends on other occupying stars, land formations and also the gua Trigram of the occupants, please be very careful of this unpredictable flying star.

Ensure that documents signed during the year are checked through thoroughly before committing. The influence of a Chen 3 in Period 8 denotes possible arguments, disagreement, back stabbing and in extreme cases, this can result in lawsuits, either as a petitioner or a defendant and also causes loss of wealth.

Either way there will be a loss of time, energy and wealth, so please be careful during 2013 especially if you have a main door in the east and if you can, try and use another door to enter and leave.

You should also hang a Ba Gua mirror with a Chinese i-ching coin on the back for added protection in 2013.

To calm interactions:

- Place a light in the east if you have a choice, a lamp with a wooden stand and a peach/red shade is better.
- Do not hang wind chimes of any material in the east in 2013, especially metal wind chimes as it will worsen matters. If you have been advised by a professional Feng Shui master this is fine.
- During hot summer months, make sure the fan is not located in the east.
- Take extra security measures for the whole home or business during 2013 and check smoke alarms.

- Check through everything before signing documents if office or other important room is in the east.
- Try and keep this area quiet and do not disturb with loud noises.
- Try not to let children or noisy animals play in the east.
- Beware of backstabbing, as sometimes it is unseen and also from someone you thought you knew quite well.
- Invest in a good compass and avoid placing machines like a TV, fan, fax machine, computer or any machines that creates noise or vibration in the east of any room.
- Most important is not to disturb the ground inside or out.

Sun 4 Green ☰ ☱ Sun 4 Green Wen Qu literacy and romance star gracefully flies into the southeast of the Lo Shu in 2013.

The Sun wood 4 resides in the wood southeast sun palace in 2013 and this is a conditional star but is auspicious in Period 8 (2004–2024). It governs romance, career, travel, creative, academic and artistic talents, wisdom and intelligence as well as self-development. With the wood of the #4 star combined with the wood Sun energy of the #4 star this is a harmonious relationship and we can expect a lovely energy from here as it creates a lovely peach blossom if activated correctly with the right enhancers.

If you want to enhance this wonderful star you must use a very special enhancer called a Yuan Wang romance & wish enhancer and considered one of the best kept secrets in Feng Shui and there are not many Feng Shui masters who even know how to create this very special cure and it is not just about the content but the thought form and with the engraved mother of pearl puff hearts talisman and thought forms placed inside the quartz crystal making this an essential cure in 2013 for the southeast romance star and anywhere you have an auspicious #4 star in your natal chart. This cure and enhancer is so important in 2013 and why it comes standard in all our **2013 cures and enhancers kit**.

Whilst this star is very auspicious without cures this #4 star can bring both wanted and unwanted romantic opportunities to the home if the cures are not put in place. Having a door in the southeast with the cures can bring in new opportunities and lots of travel and a perfect cure for a company that deals with travel or printing.

Do not use fire or metal in this area or colours white, silver. Do not worry if you have these colours already just introduce colours blue or black in the way of a floor mat, cushions, tablecloth or such like.

As in every star, the 4 Green has a positive and negative aspect to its nature. Although a favourable annual star in 2013, it can also be affected by the presence of an unfavourable monthly star and when it does, it denotes betrayal, heartbreaks, scandals and humiliation in affairs of the heart. Treat this area as your relationship and creativity area for 2013 it can be very good for you. If the east is an important area like a main door, lounge bedroom etc please keep it is clean and clutter free as possible, believe me it makes so much difference.

Couples with a bedroom in the southeast can enjoy good relationships. There may also be a chance of producing intelligent children. If you want to enhance this further place a statue of Kwan Yin in the southeast or northeast part of your bedroom.

The #4 star governs relationships so a nice romance enhancer is a pair of Mandarin Ducks.

Another traditional way to enhance fertility is to display peanuts in shells (groundnuts) or any seed products like black or red melon seeds (Gua zi). In Mandarin, peanuts are called 'hua-sheng' and for the Chinese this word is onomatopoeic in that the sound of it means the birth of many children. You should display them anywhere in the bedroom and of course be careful if anyone in the home suffers with nut allergies.

As I said above the most important cure is the Yuan Wang romance & wish enhancer and such a lovely enhancer overall although if you cannot use this write down all you want to achieve in your life and place it in the southeast of your home or office and when you write down your wish list try and visualise the positive outcome you are looking for, it really does make a difference.

On the downside we have Tai Sui grand Duke Jupiter in the southeast in 2013 and you MUST NEVER disturb the southeast inside or out with lots of drilling or knocking activities. So please be careful if you carry out repairs in the SE in 2013 and have to hang your metal six rod wind chime to control its influence in the southeast sector of your house. You should also place a Ba Gua mirror especially if you have a main door here.

Summary for year: With the above cures and enhancers in place you should reap the rewards from this area especially if you are looking to enhance relationships or creativity; this area is very good for writers, artists, students and anyone that is related to the travel, crystal, alternative, health industry.

Avoid fire element and colours red, pink or purple. Good colours are blue, grey or black. If you wish to enhance areas of creativity and academic achievements, place or hang moving objects to enhance the Ch'i of this sector, do not use wind chimes (unless for Tai Sui). Keep this area semi active with windows occasionally open. Do not use metal items here especially wind chimes from the 2013 cures. Spend time in the southeast or northeast if you want to enhance romance, creativity or academic pursuits.

Please remember that **Tai Sui (The Grand Duke of Jupiter)** resides between 142.5° - 157.5° southeast in 2013. It is vital that you must never sit facing this 15° sector. If you confront him, you will experience defeat, demotion, loss and obstacles. Instead, sit with your back to this sector and he will support you.

Cures and enhancers summary:

- Use blue in your décor if this is your office or bedroom.
- For office and studies, place a task light and a crystal globe on the work desks. Blue items can be added on the desk e.g. blue paper, blue books etc
- Avoid displaying metal objects here especially large heavy ornaments.
- Fresh flowers or small pots of green leafy or flowering plants can be displayed in this spot of the house to lift the qi. Blue or green flowers are a good choice.
- If you have mandarin Ducks this is a good area to have them and any other symbols of romance like hugging couples etc.
- Place photos of loved ones or images of love to enhance relationships or attract new love. This can be photos, paintings or statues make sure there is always a pair in the image.
- For romance a Dragon headed Tortoise or Mandarin Ducks are very good

The 5 Yellow In 2013, the annual 5 Yellow Lian Zhen star of tragedy returns home to the central palace in 2013.

The central part of your home or office is not great in 2013 and you must be aware of possible theft, arguments, disputes, hot tempers, loss of wealth and legal problems.

The most important cure other than the salt water and six coins tied with red ribbon is a six rod hollow metal wind chime placed in the centre of the building, although I do know this can be hard to do and if it is not possible to place in the centre of your building place it in the southwest of the building.

The advice I have given over the last fourteen years always comes from the heart and I try to make sure that those who do not use or cannot afford traditional Chinese cures like a **salt water cure** or six Chinese coins tied together with ribbon, that there are always alternatives you can safely use. Use plenty of good quality metal in the centre this year and make sure you cleanse all your cures from previous years. Good shapes are items made from metal that are round, even a stainless steel dog bowl is a good cure.

Do not to disturb its position here with noisy activities like renovations or maintenance work.

The 5 Yellow also called '*Wu Huang or Lian Zhen*)' in Chinese, is one of the bad annual afflictions. It is an extremely unstable star although when it comes into the central palace it feels more at home and if all the annual cures are placed it is less volatile. It has no gender and no trigram and is highly treacherous when disturbed. When disturbed, its malicious influence brings tragedy, sickness, lawsuits and major loss of wealth.

Please be careful with it. Stillness together with metal cures can keep its negative influences at bay and you must avoid using fire energy like reds and candles in the southeast in 2013.

All these cures are essential and why we have included them as standard in all our **2013 cures and enhancers kit**. An alternative cure is place some very heavy good quality round metal objects in the southeast in 2013, I do not give this advice so you have to buy from us, most of these cures and enhancers I recommend you can put together yourself.

You **MUST NEVER** disturb the centre of your home or office with lots of drilling or knocking activities. So please be careful when you hang your metal six rod wind chime to control its influence .

You must **not** place red objects, bright lights, candles or red coloured furnishing in the centre. Do not worry if you have these colours already just introduce colours white, silver, gold or copper in the way of a floor mat, cushions, throws, tablecloth or such like. You can also use dark blue or black if you prefer.

If your bathroom, cloakroom, en-suite, guest room or a large cupboard is located here, this is good for you this year, because these areas are not used much and therefore the negative power is not activated, I would still place the cures though regardless of what room is located in the centre.

It helps if you can do a natal chart of all the other flying stars in your home as there is much more you can do to protect yourself, if you know how to do a flying star chart it is worth doing or maybe consider buying our specialist **Feng Shui 2013 software**, it is worth every penny and can save you from many disasters, you will not find any better than this software as it not just tells you where the problems are, it tells you how to correct them or enhance the good areas, it is the industry standard in Feng Shui and used by thousands from all over the world.

Summary for year 2013:

Do not activate the centre with loud noises, keep area quiet and avoid at all costs building work or refurbishment. Do not use the fire element or colours red, pink or purple. Keep doors closed. Place a six-rod wind chime, Wu Lou, salt water cure and six coins here along with metal ornaments. Use colours white, silver, gold or copper. I will repeat this part, as it is so important, please keep the centre of your home or office as quiet as possible, avoid redecoration and building work in 2013 in the centre part of your home or office and when you hang your wind chime try not to make so much noise with hammers etc, don't worry about the noise the wind chime makes, this is all part of the cure, so when it is in place try and remember to knock it a few times a day.

Take extra care in the months of February, April, August (very worst month), October and November.

Every year we put together a powerful cures and enhancers kit and this year it is even better and more powerful than ever and don't just take our word though; **click here** to read hundreds of testimonials that we have had over fourteen years from every corner of the world.

Do not undertake any form of noisy renovations or re-decorative work in this part of your house or office between February 4th 2013 and February 3rd 2013. Nor should you disturb the ground by digging, building foundations or conduct any maintenance work with any noisy equipment in this area.

To calm interactions:

- Avoid playing loud music in the centre of the home or room.
- Do not decorate your centre room with red or earth colours this year. Grey, blue or white beddings and curtains are good colours to use temporarily.
- Place a salt water cure in the centre of the building along with six Chinese coins tied in a row with red ribbon and six hollow metal rod wind chime.
- The six coins in row and salt cure are a crucial cure to place in 2013, please do not forget it.
- Place a Brass Dragon in the centre of the room if this is your bedroom.
- Metal objects such as six Chinese metal coins tied in a red ribbon and/or a brass Kwan Yin can be placed in this corner too. Do not to use red dragons.
- Do not place red objects, burning candles or triangular shaped furnishing in this sector.
- Most of all, avoid disturbing the centre at all costs. Any form of renovations that needs to be done, plan it for another year. It is worth keeping this in mind.
- If you use a fan or other machines that create noise or vibration try and avoid placing it in the centre part of a room.

Ch'ien 6 White ☰ 乾 The star of Heaven Chien 6 White (Wu Qu) sits in the northwest palace in 2013.

The #6 white star is a sympathetic money star and as an annual star, its position in the northwest in 2013 is good for career, wealth, politicians, leaders and anyone involved in the jewellery business, those with an office/study in the northwest will benefit greatly although there are a few drawbacks.

Whilst 6 White star signifies success, if the #6 annual star is located in a bedroom it can cause problems with the throat and/or legs and also problems with breathing especially for the eldest male (patriarch) although they are minor problem and nothing to worry about if you follow the advice here. If you do have a bedroom in the northwest place some blue, black, grey or charcoal cloth such as a rug or duvet covers to dissipate its energy.

You should place a Divination pendulum talisman Bu Shi Bai and a set of ten Chinese tied with red ribbon in the northwest in 2013 and introduce some water colours like blues, black, grey or charcoal and you can do this with bed covers, rugs, curtains, cushions or pillows.

Summary for year 2013:

Enhancers and cures if needed:

- If this is your bedroom, a shade of blue or black in your furnishing or décor may help with health. A blue painting (not water scene) may also do.
- Symbolic objects such as a set of six Chinese coins can be placed here all year round to enhance benevolent influence and at the same time dissipate the malevolent influence by the visiting monthly #2 and #5.

Tui 7 Red ☰ ☱ The Lofty breeze of Tui (Po Jun) flies home to the west in 2013.

The mischievous Po Jun #7 argumentative red star is a negative influence in Period 8. The trigram Tui is also known as the *'Broken Soldier'*. This is a fighting star which can cause problems if left alone especially as it has flown into the west which is a metal area and whilst this puts metal and metal in neutral it can still cause conflict and denotes assault, deceit, violence and robbery. This area is not good for people suffering with lung problems like COPD or asthma although cures can be placed to dissipate the negative influence so do not worry.

The #7 Red indicates a high risk of burglary, deception, copyright theft, gossip and back stabbing especially in the months of August and April.

If you have a door that is used often in the west or a window you should be looking to update security, smoke alarms and checking electrics.

An imperative cure in 2013 and because the annual afflictions are so bad in the west, you should place a San Zhong three bell chime which is a combination of different types of good quality metal. This cure is one of the most protective cures you can use in Feng Shui and also a powerful enhancer but also for protection against legal problems, arguments, disputes and loss of wealth.

You should also hang a Ba Gua mirror with a Chinese i-ching coin on the back for added protection in 2013 in the west especially if you have a main door here.

Please take extra security measures especially if you have a front, back or side door in the west sector. Make sure doors and windows are fastened securely before leaving the house. Do not display valuable items on windowsills, which may attract the interests of passers-by. Even though we do not have doors in the west or east we have still upgraded our alarm system this year as precaution as well as placing Feng Shui cures is very important and why take risks.

Summary: Keep the west quiet and doors and windows kept closed. Good colours are blue or black and a quick and easy way to introduce them is with a doormat, floor cover, rug, bed cover etc. Avoid earth and fire colours and quartz crystals.

Summary for year:

If you have an office or door in the west be careful of people trying to deceive you, robbery, arguments and loss of wealth, always look at the very small print and be careful as this star normally causes problems with people you know and thought you could trust.

Remedy:

- You should also use more blue, grey, black or charcoal colours in your decoration. You can introduce the colour with cushions, rugs, bed covers or doormats.
- Do not use anything of fire element or colours red to control it as this may aggravate it.
- Avoid candles in the west at all costs.
- Install or service/upgrade smoke alarms and security systems.

- Do not hang metal wind chimes here.

Ken 8 White ☰ ☱ Zuo Fu flies elegantly into the northeast.

This is the most auspicious governing flying star for the next eleven years of the lower era of the sexagenarian cycle of the flying stars (Xuan Kong) system and is located in the northeast in 2013, because this lovely earth star flies into the northeast which has an earth energy this can be very good for those that have a main entrance in the northeast but either way the northeast must be activated.

When activated correctly it brings good fortune and exciting times even with the conflict of elements. Placing the Master cure in the northeast of your home or office actually remedies this area and in fact releases all its positive attributes.

The most influential and imperative cure and enhancer in 2013 is called a Hu Shen Fu Master cure and can only to be used in Gui Si (yin water Snake) year, the last time this powerful cure would have been used was in 1953. This cure is needed to enhance and protect in 2013 especially for the female of a home or office.

This cure is only known to a few specialist Feng Shui Masters and in olden days and even now in southeast Asia you would need to employ a skilled Feng Shui Master to call at your home or business and the Master would spend around 6-9 hours engraving the secret writings onto an earth plate shaped as a heart (spearhead) of the finest quality slate, marble or similar earth element.

The earth plate master cure would then be placed in the northeast of your home or business and then placing the special thought form hematite and clear/smoky quartz crystals and a special i-ching coin onto the heart shaped earth plate and the arrowhead point must point towards the central heaven heart palace (centre of building) as this is where the #5 yellow star is located in 2013 and you must have protection against loss of wealth in 2013.

The #5 five yellow disaster star visits the central heaven heart palace in 2013 with the potential to cause many wealth and bad luck problems along with the very inauspicious #2 black star in the southwest palace it brings even more misfortune. In 2013 we have all the three earth stars diagonally lined up in the northeast, centre and southwest palace and we must use this special talisman to protect wealth and luck in 2013.

The most important part of this master cure in 2013 is that the heart must have auspicious measurements for the overall length and width which must fall between 16.5 – 21.5 cm, this heart earth plate is approximately 20.5cm and this places it perfectly in the "Yi" band which is said to bring special luck of helpful people and good fortunes and prosperity. Feng Shui is not just about using any old product, traditional and authentic Feng Shui is very precise and the quality of the items used is paramount to its effectiveness.

This is one of the most powerful and commanding cure and enhancer for wealth, health, relationships and protection in 2013 and because this cure is essential we decided to include it standard in all our **2013 cures and enhancers kit**.

If you work with symbols, quartz crystals, crystal balls or hanging faceted crystals are very good for the northeast this year. The #8 star also governs relationships so a nice romance enhancer is a pair of Mandarin Ducks.

A lovely enhancer for the northeast in 2013 is a crystal Lilly. With the #8 wealth star visiting the west Ken palace, which is earth meeting earth and a great combination.

Do not place heavy metal in the west of your home or office this year, as it will weaken the good earth.

Once you activate with the earth plate master cure this is a very strong wealth, success

and romance area for 2013 so try and store your important financial papers here like pensions, stock portfolio etc in the west. If you use symbolic cures this is where you should place your three-legged Toad facing your Sheng Chi direction for wealth or a pair of Mandarin Ducks for romance.

Summary for year.

Take extra care with health in the months of February, April, June, May and November and the good months will be March, June, July, August and October.

To enhance:

- Hang a faceted crystal sphere in the northeast of the house. Hang it above head height and twist now and again.
- The energies of the annual 8 can be activated by human activities. Use this room as frequently as possible unless you have received professional advice against it.
- A red three-legged toad can be placed here. Make sure the toad is facing into the house and not towards the door and the coin is never taken out of his mouth.
- Introduce some fire colours into the northeast to balance the energies, a quick and easy way is using bed covers, rugs, table covers, sofa throws etc.
- If your bedroom is here, you can also place an amethyst or any crystal items in the northeast of the bedroom to further strengthen the earth element of the benevolent 8.
- This is also a good study area for children. Place a task light and a crystal globe on the desk to enhance concentration.
- Keep this area active with open windows and doors (yang energy).
- Keep the area outside and inside the northeast, north, south and southeast as clear clutter free and open as possible, you need to let the auspicious Qi collect here and distribute inside and outside, when this happens it is known as Ming Tang (明堂), this is a collection of Sheng Chi (auspicious energy)

Li 9 Purple 離 (You Bi) Li 9 Purple is found in the south 東南 palace in 2013 and this is a lovely combination of fire meeting fire in the Li palace although it still needs two very important enhancers to activate this combination.

The 9 Purple is the star of future wealth and has an auspicious influence in Period 8. Career opportunities and promotions are probable especially if you have an office or main door in the south in 2013. There is fame and acknowledgement, growth and improvement.

This is a good area in general especially for those in studies. If this is a family area (living, dining or a library), encourage children to study here.

Couples with a bedroom in this location can also enjoy good relationships. There may also be a chance of producing intelligent children.

An important enhancer to use this year is a pair of wealth Toads. The three legged Toads must have a total of 21 auspicious i-ching coins, ten that he sits on symbolising protecting your current wealth and ten on his back symbolising bringing new wealth into a home and/or business and one in his mouth to further attract new wealth and good luck and to further create the perfect wealth enhancer in 2013; they both sit on a wealth ingot. The two Toad Gods must face each other so to protect the wealth they are carrying and also to generate new income which is very important in a yin water Snake year.

Toad Gods also known as money Frogs are renowned for protection against loss of wealth and luck and the creator of wealth and good fortune and why we had this combination created. Made from resin and looks like Cochin ceramic, each hand painted to a very high quality, standing on a plinth. They should be placed in the south in 2013 or placed looking onto a main door or a windowsill looking into the room. Every home and business should have this powerful and most beautiful cure and enhancer.

Another important enhancer and cure in 2013 and one that must be used and placed in the south in 2013 to release the auspicious energies and dissipate any negative effects that can cause problems for women around the stomach area; it is also used to enhance wealth, romance, relationships, academics and creativity. If the south of a building is activated correctly with this sheng chi cure and the Toads of duality it is said to bring great riches along with contentment although riches can be that you become rich in happiness, health or peace of mind, those who train with Michael will know that wealth in Feng Shui is not always about money, you can be wealthy in love, health wealth etc and when you get this lovely double 9 combination it can bring great wealth into a home and especially a business.

This powerful enhancer is a little known amulet charm and the reason it is called "Sheng Chi" is because it creates a cycle of life and works in synergy with the earth's cosmic breath with a very special crystal, i-ching coin, faceted ba gua (octagon) shape crystal glass and a stunning piece of Burma jade carved into a circle shape. This really is an amazing enhancer and cure and there are not many Feng Shui Masters who know how to use it and empower it with the energy that it needs.

As both of these cures are essential in 2013 we have included them standard in all our **2013 cures and enhancers kit.**

The south is a lovely area in 2013 and nice to see no annual afflictions so those with an important room in the south can expect a good year although you will need the cures and enhancers above. Place some nice thick leaved plants in the south in 2013; however, you should not use sharp leaved cactus plants. A powerful plant to have here is an Echinacea plant especially if you are trying to improve health. Although the health is perfect in our home I will still be using this enhancer as maintaining good health is very important and I love the idea of this cure, if you follow this link you will find an article on growing Echinacea. <http://www.telegraph.co.uk/gardening/howtogrow/3312790/How-to-grow-echinacea.html>

Summary for year:

Be aware of the negative influences during March, May, June, August and December. Good months are April, July, August and September. Check the monthly Xuan Kong flying stars.

To enhance:

- Healthy green leafy plants or blue flowering plants such as violets are good for this area.
- Fresh flowers displayed here will bring positive qi too.

Spend as much time as you can reading this report, save it and print it to read at your leisure as it can save you from a lot of problems. You don't have to buy any cures and enhancers and I hope you agree I have always given you alternatives to the traditional cures and enhancers but if you do decide to buy a cures and enhancers kit you should read

what some of our clients say about annual cures kits, not only do they offer you protection they enhance the beneficial areas, click on the banner below to read some of the thousands we received over the years.



Water placement in 2013:

As we entered period 8 (4th February 2004) the use of water outside is critical up until 2024, so a pond outside in the correct area can really work in your favour. You must not unless advised by a professional Feng Shui consultant place water outside in the north-east up until 2024.

Outside water in 2013: Can be placed in the southwest or east, this is your primary and secondary wealth areas for the next twelve years. In 2013 water outside in the southwest is very good but it would not be advisable to install a water feature this year though as the annual flying star is inauspicious, if you know what your natal chart (flying star chart) is and you also have a good facing star this would make a very powerful combination for wealth. If you do not know what your natal chart is or do not know how to create one take a look at our Feng Shui software as it does all the work for you, **follow this link**. Because the southwest is afflicted in 2013 I would not advise digging or disturbing the SW in 2013 but if you want to place a mobile water feature in the SW this is fine although still check with your Feng Shui Practitioner or use our Feng Shui software.

Indoor water for 2013: You can use a moving water feature or aquarium in the northeast (inside only) or north in 2013. Do not use water in any other compass sectors unless you have had a professional Feng Shui consultation or use our **Feng Shui software**.

If you are using water you must make sure the water is clean and flowing and never allow it to become stagnant. Water is a very powerful enhancer and is the essence of Feng Shui (Shui meaning water) the Ch'i is caught by the water and cleansed (providing the water is clean) and distributed throughout your property. If you look on our **resource pages** you will find more detailed information on water placement for 2013 and beyond.

Whilst the methods above are considered safe, there are many exceptions to the placement of water and as Master Practitioners and **teachers** we use many more methods of water placement for wealth, education and relationship, these methods whilst extremely powerful can only be used with expert guidance and a full analysis of your property and land formations, please visit **this link** for more details of an on-line consultation or home/business visit. Or consider our powerful **Feng Shui 2013 software**.



Salt water cure after 4 weeks.



Every year we receive thousands of e-mails saying how the **salt water cure** changed the energy in their home for the better; this is a very powerful and little known cure and one that we have been using for over twenty years. You should use the salt water cure this year February 4th 2013 in the southwest & centre of building (**DO NOT REUSE LAST YEARS SALT WATER CURES IF IT IS MORE THAN TWO MONTHS OLD**).


There are many exceptions to be made, the thing to remember with flying stars is, if you have a 5 yellow in a dining room and if it is an open plan home the 5 yellow's power can drift into any other part of the home, think of perfume, if you sprayed some in your bedroom your partner may still be able to smell it downstairs because the smell goes into the air (Ch'i) and drifts around the home, so as general advice it is better to cure than leave to chance.

How to dispose of your old salt water cure?

You should change your salt water cure every year, why? Because they store an enormous amount of negative energy and moving it causes problems in all parts of a building. The best way is to get a Tupperware type container (margarine tub etc) and place the entire contents salt, water, glass and coins into it, close and seal the lid and throw straight into an outside bin. If you do not have a container pour the water down an outside drain (one at the back of house that leads away from the building) and place the salt/glass and coins into a plastic bag and place in bin. Please do not try and recycle, it is not worth it, this is the main reason we sell ours so cheap to make sure people can easily and cheaply renew them. Last year I saw a few websites selling these for 4-5 times as much as us. As with all our products they are cleansed of all negative energy and empowered with positive energy and the coins also come from a good dynasty making them even more effective.

If you want to be kept up to date with the monthly flying stars click on the link towards the top of the page to join our free monthly newsletter, it is read by over 85.000 Masters, Practitioners and fellow enthusiasts from all over the world.

Read What Our Customers Say
火 About Our Cures Kits 戌

Tell a friend
about this page 

Are you really prepared for 2013?

© Michael Hanna - Feng Shui Store 2013

The below copyright information does not apply to anyone who wants to copy our content or send to a friend or even store on your computer for their own personal use and development. Please feel free to copy and paste or share with as many people you like. The below is intended for the people who steal our content and claim it to be their own work.

We are more than happy to share our content; all you need to do is give us credit for our hard work and a link back to our website. Contact [**michael@fengshuiweb.co.uk**](mailto:michael@fengshuiweb.co.uk) for more details.