

# 壬辰 Are you prepared for... 2012 Year of Yang Water Dragon?

## 2012 Flying Stars Analysis

© Written by Michael Hanna 2012



*"Reading is to the mind what exercise is to the body. Give your mind a workout and read this valuable document about the year of the Dragon"*

On February 4th 2012 we enter a new solar Chinese year (year 4709<sup>th</sup> in the Chinese calendar), the year of the Yang Water Dragon (Ren Chen). The last time we had a Yang Water Dragon (Ren Chen) year was back in 1952 and this is a cycle of 60 which will be found in a traditional "ten thousand year calendar or our **Tong Shu 2012 software**.

The year of the water Dragon will be a year of changes and the major Dragon year of 1964 saw many advances the world over with regards to racial discrimination and this was the year the 1964 civil rights act came into force which was the start of change the world over.

In 2011 we saw many changes the world over especially in middle-eastern countries and 2012 will carry on in the same way bringing political changes the world over with many changes for the better. We predicted 2011 would see many new medical breakthroughs which was the case but 2012 and 2013 will see even more changes for the better and new medicines will be at the forefront of the news in 2012.

Unfortunately one aspect of change in 2012 will be that finances will be even tighter than they have been for the last 3-4 years and special Feng Shui cures are needed this year more than ever.

The 2012 annual flying stars Xuan Kong full analysis is detailed below. Please do not get confused with solar (this is when you place Feng Shui cures – spring begins) and lunar (celebrate Chinese New Year) calendars, more on this below.

In 2012 annual Feng Shui Cures and Enhancers are needed more than ever as the flying star #8 wealth star flies into the west metal Tui (Dui) palace and this can cause financial problems and/or problems with the youngest female in the home or business as there is a clash of elements in the west palace with metal weakening earth and very special and little known cures and talismans area needed. Are you really prepared for 2012?

Over the last thirteen years around Chinese New Year (solar) we select a very valuable and essential Feng Shui cures and enhancer's kit of little known Feng Shui cures and enhancers that can be placed at any time of the year. In February 2012 the most auspicious number 8 star visits the west metal palace and we will need some very powerful cures and enhancers as there is a clash of elements between earth and metal and this was similar to the combination in 2011 with metal weakening earth and we all know what happened to finances for most countries in 2011. Many of these cures and enhancers we are using in 2012 are very tightly held secrets and although many websites have tried to copy them from us, they **do not** have the ingredients right and this can actually cause more harm than good.

The 2012 Feng Shui cures and enhancers kit is not just some gimmicky cures put together; they are extremely powerful cures and enhancers that only the most advanced Feng Shui Masters and Practitioners throughout the world use and quite a few of the cures in our kits are one that many Feng Shui Masters charge thousands of pounds for. It does not matter how late in the year in 2012 you place your cures kit, we have many clients who have even placed them towards the end of the year and still got great results.

The most powerful and imperative cure and enhancer in 2012 is called a Ba Gua Shi Master cure and can only be used in Yang Water Dragon (Ren Chen) years, the last time this powerful cure would have been used was in 1952. This cure is needed to enhance and protect wealth, career and business in 2012 especially for the female of a home or business.

This cure is only known to a handful Feng Shui Masters and in olden days and even now in Asia you would need to employ a skilled Feng Shui Master to call at your home or business and the Master would spend hours carving the secret inscriptions onto a Ba Gua eight sided earth plate made from the finest slate or marble, which would then be placed in the west of your home or business and then setting the special quartz crystals, i-ching coin and with special marker that would have to point towards the Sun palace of the southeast especially for 2012 as we have a #5 star visit the southeast which again is a clash of elements and this is combined with the tai sui. This master cure would normally cost tens of thousands of pounds and obviously only available to the very rich which is still the case in many parts of the world and the reason why we create these powerful cures so all can afford them at a fraction of the cost you would normally pay.

Each of the rare and valuable semi-precious quartz crystals work in synergy with the inherent element of the ba gua (pa kua) giving total protection for wealth, health & peace of mind and releasing the #8 star from the powerful energies of the #8 star in the west in 2012 to permeate the whole building. The elements we have here in the west are extremely powerful and without this cure and enhancer it will be trapped and cause many problems.

With the ba gua master earth plate it must be carved into an eight side ba gua but you must NOT use a normal Ba Gua with a small mirror in the middle, please do not do this and only use an eight sided plate made from an earth element such as slate or marble and must be sized between 101 and 109mm (4 – 4.4 inches) with the correct talismans engraved and crystals and i-ching coin along with an earth based arrow shape pointing towards the southeast.

The most powerful quartz crystal used is Tigers eye which is a master stone with amazing protection qualities and also superb for wealth and business, you cannot use just any crystal with this cure/enhancer, this is very important and if used in any other formation or incorrect crystals it can cause problems.

We only use the finest quality authentic handpicked quartz crystals and they have to be placed exactly as shown in the enclosed instructions with an auspicious dynasty Chinese I-ching coin placed in the centre of the earth plate.

The ba gau earth plate is custom made for us and which must measure between 101 and 109mm (4 – 4.4 inches) and engraved with the special and little know talismans and made from 500 million year old Snowdonia slate which is the finest quality earth element you will ever find, This earth plate must face a certain compass direction (the instructions show you how to set this cure up) even if you do not own a compass for northern and southern hemispheres so it does not matter where in the world you live.

With the #8 star visiting the west Tui (Dui) palace in 2012 you have earth meeting metal which is in conflict although if activated it can bring good fortunes but it must be activated with this little known cure.

Feng Shui was actually only available to the rich in the old days. The old Feng Shui Masters would use an eight side piece of slate, stone or marble and a marker that pointed towards

the south and is by far the best cure and normally far too expensive for the average person and only the rich could afford to use them especially as they were hand made. We still have our ba gua earth plate individually hand cut for us and they really are works of art in my opinion and such a lovey cure to use in a yang water Dragon year.

This is one of the most powerful and commanding cures and enhancers for wealth, health, relationships and protection in 2012 and because this cure is essential for wealth and protection in 2012 we decided to include it standard in all our **2012 cures and enhancers kit**.

**If you want to avoid** wealth problems, sickness, arguments, bankruptcy, legal problems, loss of wealth, relationship problems, problems with the mouth, sore throat, chest problems, indigestion, skin problems, car accidents, accidents or any accidents involving metal and just overall bad luck or if you want to enhance the positive areas in 2012 **read on...**



**If you would like more details on the 2012 cures & enhancers kit please click here.**

**Are you really prepared for 2012?**

In 2012 we have the #8 white Star (Zuo Fu) visit the west Tui palace and whilst #8 star is an auspicious star, the fact that it is in conflict with the metal energy of the Tui palace can cause many problems associated with finances and some very powerful cures are needed in 2012 to control the combination.

The predictions we made for 2011 and thirteen years before then were as usual 100% accurate and fortunately thousands of our clients have survived the further dip in the economy and many other problems not just in 2011 but over a decade before then, you can read the thousands of emails and Facebook comments from people who testify to our annual cures and protection Feng Shui kits.

The year of the Dragon is unfortunately in conflict in the west with earth weakened by metal which can cause problems with wealth, deception, fighting, arguments, misunderstandings, and gossip, 2012 unfortunately will not be a steady year. We will still experience hostility around the world like last year and predictions of natural disasters like earthquakes; landslides, floods and further worldwide disasters are highly likely. There are many other nasty predictions for 2012 but as you know we don't like making them too in-depth as the power of the mind is extremely powerful and can manifest the problems and

in our opinion if you follow all the advice in this document you could avoid many problems in 2012.

You still need to take care again with investments in 2012 so make sure you do not take any risks and of course make sure you place all your 2012 annual cures and enhancers as this will help lessen the effects and turn a potentially bad year into a good one.

I shall now be more positive and whilst many Feng Shui websites are predicting complete doom and gloom in 2012, I think much good will come from all this and it can be very good for career and relationships, this is especially so if you activate your east, west and northeast sectors of your home.

Finances could be a problem in 2012 but if you use the Ba Gua Master cure in the southeast and the five elements aspiration enhancer (Yuan Zeng Jin) in the southwest you can turn bad into good with regards to wealth and luck. There are many good aspects of 2012 and if you follow the advice below you **CAN AVOID** many problems and this is the reason why we introduced our annual **cures and enhancers kits** back in 1999 so you can avoid many of the problems above. I am very much looking forward to 2012 and so should you...

Those born in the year of the Tiger, Ox and Dog may be affected by the conflicting influences of the year of the Yang Water Dragon (Ren Chen) and those born in the year of Rat, Rooster, Monkey can expect a great year but either way you can make your year so much better just by following the advice here.

The degree of influence varies from one person to another. One of the major considerations is the heavenly stem of the year in which one was born, so those who were born in 1970 & 1910 Geng Xu (Yang Metal Dog) will have a bumpy ride than those born in 1934 and 1994 Jai Xu (yang wood Dog). Dogs also born in water years, 2012 will be much better and if you place all cures and enhancers you will avoid many problems. For more information on your personal **Chinese Animal predictions for 2012 click here.**

The forecast for the Dog, Ox or Tiger may seem inauspicious in 2012 but please remember this is only one small influence in the big scheme of things in life. Things can turn out really well despite this, if you turn your attention to the annual and monthly flying star forecast on the energies of the space you occupy in your home and office in order to reduce predicaments. Combine this with **flying star 2012 Feng Shui software** and date selection software you increase your chances of a good year even more.

I have thousands of clients from every corner of the world and over the years each home and person I see will be different, as an example in 2012 if you have a bedroom or main door in the southwest, north southeast or northwest this can cause problems with finances, bad luck, disputes, relationships, stomach and also depression and if you were a person that ate a lot of junk food it would cause you stomach or bowel related problems, however, if in 2012 you ate better and as an example started to do more exercise, Yoga, tai chi combined with meditation the risk is substantially reduced and if you combine this with placing our annual cures and enhancers the risk is even less. There is no standard Feng Shui, one man's food can be another man's poison...

### **Surely the 2012 cures and enhancers will make you exempt from any problems?**

If your bedroom is in the southwest, north southeast or northwest and you are overweight, smoked, ate junk food daily, drank heavily and a bit of a couch potato and thought that taking a vitamin C tablet at the end of the day will rejuvenate your body and mind, you are very much mistaken. I am not coming from a moral high ground here and as hard as this may sound, you will, I guarantee have problems in 2012 but if you make changes this year you will avoid many of those problems, placing just the cures and enhancers on their own will help immensely but you should also make lifestyle changes. Please do not think I am standing on my high horse being all righteous and perfect, far from it, I am just giving you this advice as I have worked with thousands of clients throughout the world and **I know** the outcome.

With all that said please do not start panicking if your bedroom, living room, main door or office are located in the southwest, north southeast or northwest, just start preparing to place your **2012 cures and enhancers kit** to ensure a trouble free year in the year of the Dragon 2012.

In 2012 we will be placing every single Feng Shui cure and enhancer that I talk about on these pages but I will also make some more lifestyle changes. I am 53 years old, if I am not in my car; I am on a train or a plane or sat at my desk. With my journeys all over the world I eat in a lot of hotels and restaurants and whilst they are always good quality it is still not always the right food for me with maybe a higher intake of salt or fat that I would normally have at home.

I do meditate nearly every day; I do take long walks twice a week and do qi gong most days, however, my objective for 2012 is the same as 2011, is to place all the annual cures and enhancers, eat better and healthier and take more exercise, this has actually been my aim since I turned the dreaded 50 and so far so good, in fact I feel more like 25 rather than 53.

As you may know we have given this Feng Shui advice to hundreds of thousands of Feng Shui Masters, Practitioners, students and enthusiast for 13 years now and although we make many suggestions on cures and enhancers we do not always agree with many websites insisting that you have to spend hundreds of pounds each year on cures and enhancers, they are simply not needed.

There are two products I do strongly recommend, which are, our **2012 annual cures kit** and the world's most powerful and most widely used all new **Feng Shui 2012 software**, with over eight years in development, over 50 combined years Feng Shui experience and one year of beta testing with Feng Shui Master's, Practitioners and students from all over the world, Michael Hanna and the International Academy of Feng Shui have built the most powerful Feng Shui software available. This software is used by thousands of Feng Shui Master's. Practitioners, students and enthusiasts from **over 118** different countries throughout the world.

**"A Danger Foreseen - Is A Danger That Can Be Avoided"**

### **What do I do with last year's cures & enhancer's kit?**

Most books or websites will advise you to throw away your old annual cures and enhancers and bury your old six-rod wind chimes; six Chinese coins tied with red ribbon, Pi Yao, wu lou, ba gua mirror etc from the previous year because they store so much negative energy. This is not always necessary as long as you cleanse the items before replacing for the new Chinese year.

To cleanse them ideally you should place outside under a full moon overnight or in direct sunlight for at least 4 hours and sprinkle with rock or normal salt. Make sure you rinse under water (don't forget to dry them) in the morning and you should place them in the appropriate areas as detailed below. This does not apply to the salt water cure, as these **MUST** be **renewed** every year without exception and must never be reused. As with all our products including the annual cures kits, they are all cleansed of negative energy and empowered with positive Sheng Ch'i energy, which makes them so much more effective.

Many people write in asking if we personally change our cures and enhancers kit each year as nearly all websites and books say you should throw them away. Our circumstances are different to yours, we have thousands of these cures and enhancers in our warehouse but we have never changed our Wu Lou (21 years old) or Tsai Shen Yeh. We change our wind chime and Pi Yao every year, the salt water cure we change without fail each year and I must admit the six Chinese coins tied in a row with red ribbon we always change and our Ba Gua mirror yearly as these are very bad to keep for too long and the reason why we will never sell plastic or metal Ba Gua mirrors as they do not age and store so much

negative energy and will cause you many problems. You must never use a plastic or metal ba gua (pa kua).

My advice is even if you have our kit from thirteen years ago, carry on using it but follow the advice above about cleansing and make sure the salt water cure (must replace) and maybe six coins are replaced as these hold a lot of negative energy. Please **never** throw your Wu Lou away these are specially made for us and are the correct weight and size and I think they are a work of art and extremely powerful.

### **I cannot afford these cures or enhancers and/or my partner does not believe in Feng Shui?**

Your home or office does not have to look like a Chinese restaurant to have good Feng Shui, if you do not want to have six Chinese coins tied in a row with red ribbon or a Wu Lou beside the bed there are alternatives. For the southeast and north of your home or office use good quality heavy metal ornaments, a good shape is round as this represents metal but avoid menacing looking ornaments like metal knives or similar or anything that is aggressive looking with sharp corners. I have some clients who hide cures like a set of six Chinese coins tied together with ribbon hidden behind a picture or similar and still get great results.

An alternative to a salt water cure in the southeast and north in 2012 although nowhere near as powerful is a bowl of ultra clean still water. The water must be kept very clean though otherwise it will cause you many problems. I am not that keen on recommending using a bowl because they can get dirty especially if you live in a hot country and can cause many problems, so please be careful if you do not use the salt cure.

In the west and northeast place some real quartz crystal or objects that are made from an earth material like ceramic, this will enhance wealth. The most important cure and crucial in 2012 in the northeast of your home or business is to place an eight sided ba gua piece of slate measuring between 101 – 109mm in size along with selected crystals and Chinese coin as detailed below (try and make sure it comes from a good dynasty if you can). Take a look at our **annual cures kit** and be as imaginative as possible in creating your own kit.

If you look at all the information below you will find more alternatives for all the compass sectors without having to buy anything.

### **So what is flying star (Xuan Kong)?**

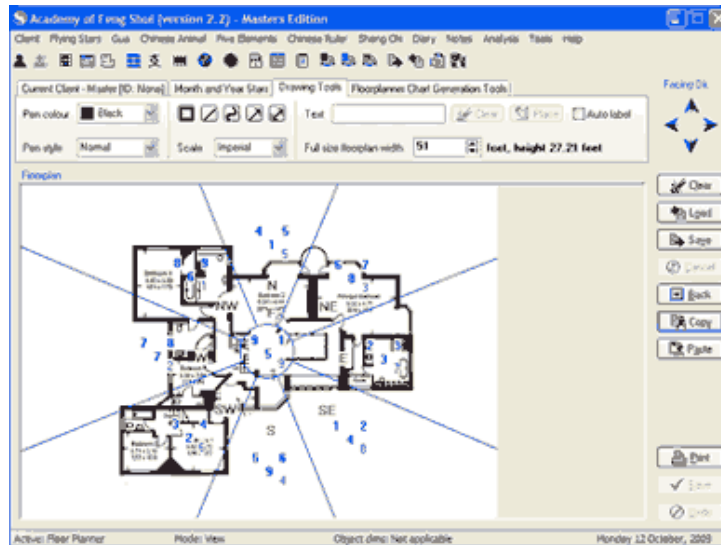
Flying star (Xuan Kong) Feng Shui is the most powerful form that most professional Feng Shui Consultants use; it has absolutely nothing to do with astrology. It is an analysis of the five elements, land forms and star combinations that occupy your building. Each Chinese New Year in February these annual stars change, bringing good and bad energy and their effects are varied each year.

Every year and month we give free accurate information on how you can suppress or enhance the sectors of your home or office. Every building throughout the world will have these changing annual stars and you will need to take into account their ability to cause harm ranging from, sickness, wealth problems, legal problems, gossip, relationship problems and just overall bad luck and of course their ability to give auspicious good luck in wealth, health, romance, education and overall good well being. Unless a good star is activated it is of no benefit to you so follow our advice carefully.

*"We don't stop playing because we grow old; we grow old because we stop playing"*

**Sample of a Flying Star chart (natal chart)**

Generated with our Professional **Feng Shui software**. This chart below does not just focus on annual and monthly stars but also your fixed stars that are hundreds of times more powerful.



**2012 is the 4709<sup>th</sup> year of the Chinese calendar.**

In China, the solar calendar of the Ren Chen (yang Water Dragon) year starts on 4<sup>th</sup> February 2012. You can find a page on world times for the solar and lunar Chinese New Years to avoid any confusion, **World times Chinese New Year**

**Good travel directions in 2012 year of Dragon**

Northwest, north and west

- The first day of the Hsia (solar) calendar is February 4<sup>th</sup> 2012, this is the day you would place your Feng Shui cures and enhancers.
- The Dragon year ends February 3<sup>rd</sup> 2013
- 2012 is a Yang Water Dragon year (Ren Chen)
- Chinese New Year falls on January 23<sup>rd</sup> 2012 (Lunar calendar). This is the date you celebrate the Chinese New Year with **Ang Pow**, fireworks **Talismans** etc and not the date you use to place cures and enhancers in Feng Shui. For more details on **2012 Chinese New Year click here**.

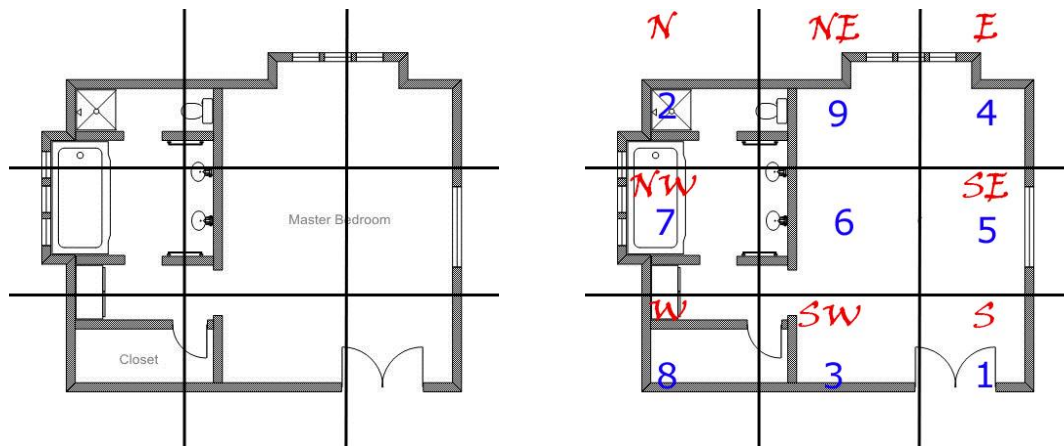
**HOW TO FIND THE 2012 COMPASS SECTORS WITHIN YOUR HOME OR OFFICE**

**Firstly**, you need a floor plan of your home or office. This can be hand drawn but it should be more or less to scale but don't worry if it is not, it will give you a good idea either way. Define all the interior walls that indicate the different rooms. You can actually do your own floor plan within our Feng Shui software which makes it very easy.

**Secondly**, you need to divide your floor plan into 9 grids or wedges in proportion as shown below. Next, you need to know the compass direction of your home or office. If you need help taking **compass readings please visit this page**.

Once you have your compass readings; you will know which wall is in which direction and you can then overlay the year's Lo Shu grid (annual stars) according to the eight magnetic directions. So in 2012 you will see from below that the #5 star falls into the southeast area

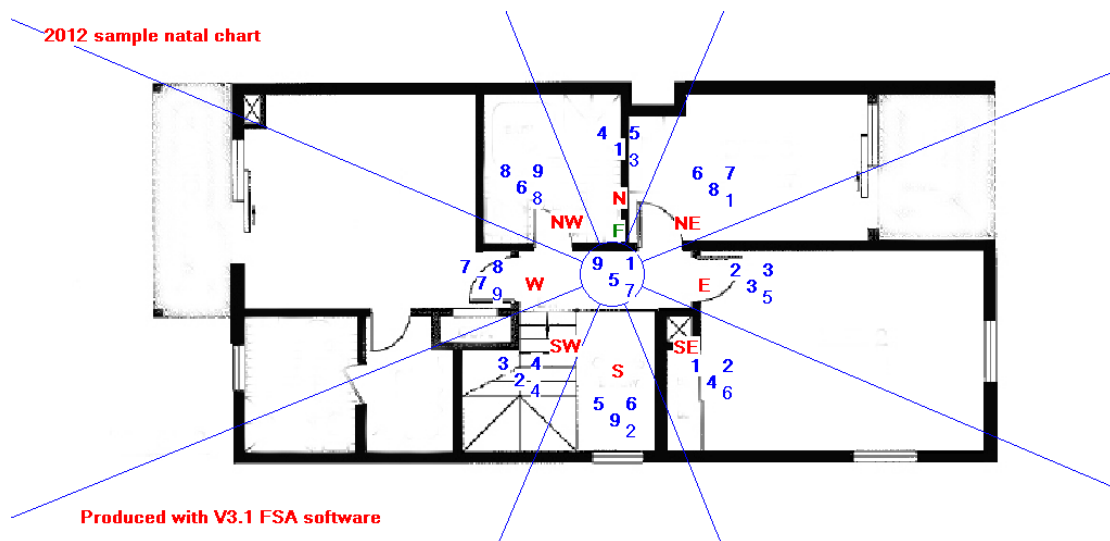
for this home which is a bedroom and this could cause problems if you do not place any cures.



The chart below is for a house facing 256 degrees north 2 (Tzu mountain) built in 1960.

This chart below was created with our **Feng Shui software**. The top left number is called the mountain star and affects health and well being, the top right number is called the facing star which affects wealth, and the middle number is called the period number and comes from the year the home was built. The bottom right number is the 2012 flying star. At a glance you can see where all the annual stars are along with mountain and facing etc and the reason why the software has become the industry standard in Feng Shui. The chart below is actually a very special chart called a "combination of ten with sitting" and requires careful analysis and the software explains in great details of how to get the best of every home of any age in any part of the world facing any direction.

This is why I do not want to know any personal details on a client that I consult for, as these numbers (along with land formations around the home) tell me everything about health, wealth, career and every part of their life.



***"A small house will hold as much happiness as a large one. It is not about the size of your house, it is the love that fills the home"***

## The 2012 Annual Feng Shui Afflictions:

**The Three Killings** - is a direct translation from the Chinese 'San Sha'. This annual affliction is mostly in the south (142.5° to 217.5°). It is imperative that you do not undertake any form of noisy renovations or re-decorative work in the south part of your house or office between February 4<sup>th</sup> 2012 and February 3<sup>rd</sup> 2013. Nor should you disturb the ground by digging holes, digging foundations or conduct any maintenance work with any noisy equipment in this area inside or outside your property or garden. Once disturbed, this affliction will bring about three types of misfortunes – financial loss, sickness and arguments. This is the worst out of all the annual afflictions and in our home and business we take this very seriously as in our 31 years' experience with Feng Shui we have seen some pretty nasty events from this energy when disturbed.

Apart from not disturbing its ground, there are two other rules you should follow regarding the Three Killings. Firstly, if you are moving your desk around this year, never sit with your back to this direction (south). Secondly, it is better to face (south) this direction, especially if this is one of your four favourable personal directions.

If your front door faces the south in 2012, place a pair of Fu Dogs just inside the house looking outwards as protective guardians for the year.

If you have to carry out work or emergency repairs in the south place a six hollow metal rod wind chime between the buildings and where the work is being carried out and ideally you should contact a professional Feng Shui Consultant to select an auspicious date to start the work or you can use our Tong Shu software.

**Tai Sui (The Grand Duke of Jupiter)** resides between 112.5° - 127.5° southeast. Do not take this affliction lightly. Do not disturb the ground in the southeast at all costs. Southeast facing properties with front doors to the southeast must be careful not to allow the doors to slam and do not renovate or dig in this part for 2012.

With the very inauspicious #5 Lian Zhen star also visiting the southeast palace in 2012 (same as 2010 you have earth meeting wood which is a destructive combination and can cause bad luck and health problems and needs very specific cures and of course when you combine all this destructive energy with the even more destructive Tai Su (Grand Duke) you need the best cure available in the southeast in 2012. You need a special cure – this special cure comes standard with all our 2012 annual cures and enhancers kits.

### **Sui Po (The year breaker)**

Sui Po year breaker occupies the 15 degree mountain directly opposite Tai Sui Grand Duke, which for 2012 is northwest (292.5 – 307.5). You should treat this area with the same respect as the other annual afflictions with no groundbreaking work, renovations or any noisy activities. If disturbed this area can and normally will cause immediate health problems especially for the elderly or sick so please be very careful. If you have to carry out work or emergency repairs in the west place a six hollow metal rod wind chime between the buildings and where the work is being carried out and ideally you should contact a professional consultant to select a favourable date to start the work.

**The annual five yellow** has flown to the southeast (112.5 – 157.5) in 2012 and because the southeast is associated with wood energy this is not good and the reason why so many specialist cures are needed in 2012. It is highly recommended not to disturb the southeast with noisy activities, renovations or maintenance work. Homes with gardens or driveways in the southeast of the property should avoid disturbing the ground with major digging or building work. When disturbed, the Five Yellow can bring disaster, sickness, lawsuit and major loss of wealth so please be very careful in the southeast in 2012, it is very afflicted.

Please do not start worrying if your bedroom or office are located in the southeast, just start preparing to place your 2012 cures and enhancers kit to ensure a trouble free year, and of course make sure you sign up for our **free monthly newsletter** so you are kept up to date with the monthly flying stars giving you even more control of your destiny. To give you even better control use our advanced **Feng Shui 2012 software** as this gives advanced analysis of every home or office facing any direction in any part of the world.

### How far do we take the advice we give?

My garage door falls in the southeast and we will be using our northeast side gate door to enter and leave the garage in 2012, it will be a little inconvenient for us but it really does make a big difference and because we have quite a strong conflict of energy in 2012 we need to get as much wind in the sails as possible.

We will also be placing all the 2012 cures in the southeast to help dissipate the negative energy that is here for the year. Am I concerned about the southeast this year? Not in the least, having good Feng Shui is actually being aware of potential dangers and making allowances and placing cures, you can and will avoid many problems. Last year in 2011 we had the same problems in our main office in the south and we sailed through with no real problems at all.

If you are moving furniture around this year, especially your work desk, it is vital that you must never sit facing this 15° sector (southeast). If you confront Tai Sui, you will experience defeat; demotion, loss and any venture will be met with obstacles. Instead, sit with your back to the southeast and he will support you. Avoidance is the best cure.

The traditional Chinese method is to place a gold coloured Pi Yao in the northwest sector of your home or office facing southeast to appease Tai Sui. Use a compass and take the reading from the middle of the home to place the Pi Yao accurately to face the 15° radius southeast.

If you have to carry out work or emergency repairs in the southeast place a six hollow metal rod wind chime between the buildings and where the work is being carried out and ideally you should contact a professional Feng Shui expert to select a favourable date to start the work.

### How far do we take this no digging or no noisy equipment?

What if your garden is in the southeast, south, southwest or north? Does this mean no cutting the lawn or cutting back the trees with a noisy hedge trimmer in 2012? Of course you have to do these jobs and if you cannot avoid building work or digging, use the following rules to reduce any harm that may result. Place a six-rod metal wind chime between your house and building work whilst the work is being done.

- Start trimming or mowing from a different corner of the garden. Let us say your garden is in the southeast of the property. You should remember to start your garden work from the west or northeast corner as this carries an auspicious energy in 2012.
- The simple thing to remember is **AVOID** doing heavy work here and no digging or breaking ground, I have seen too many times some nasty repercussions from disturbing these afflictions in a year.

### 2012 Annual Flying Stars:

The analysis of the annual flying stars can only be conducted from a general point of view offering indications as to the potential influences of the stars in the respective palaces for the year of the Dragon.

How each area affects the wealth and health aspects of the residents depends greatly on the quality and combination of the 'facing' and 'sitting' stars of the property's natal chart. If you have had a consultation by Master Michael he will be able to advise you better for 2012 or if you use our Feng Shui software it will show you where all your wealth, relationship, career areas are as you could have at the very least two wealth areas and maybe as many as five.

Please make sure you read all of the report below as you will need to make the most of 2012, it may appear that 2012 will not be a great year but believe me just following this advice can make 2012 year of the Dragon a great year. The northeast and west are very auspicious and if you placed a lottery ticket in the northeast or west you will greatly increase your chances. The lottery ticket below was created with an individual's own unique lottery numbers with our Feng Shui software and taken from their birth date and just by placing it in the west or northeast can increase the chances of a win tremendously, and if you own the software you increase your chances even more as it calculates even more advanced formulas to tapping into wealth and good luck.



**Kan 1 White** ☵ 坎 In 2012, Kan (Tang Lang) trigram flies gently into the south.

Kan #1 is a water element. In the physical body it is the ear. Internal organ it is the kidneys and it is also blood. It also affects career and overall luck. In 2012 it is a lovely timely star although in 2012 it is combined with the fire energy of the south and needs attention.

Kan water #1 (tang Lang) has flown into the south Li location in 2012 and the south is a fire energy and from a five element aspect this is considered a destructive association with water controlling fire, although in my opinion and also experience this combination in period 8 can bring amazing results if the right cures and enhancers are applied. In advanced Feng Shui the combination of fire and water is actually very good and considered an alchemy when activated, which of course we will show you how to do.

Although the inherent water energy of the #1 Tang Lang can cause problems relating to lungs and the head therefore cures are needed to protect and enhance finances and to help protect health. This combination can be good for the middle daughter or female especially with regards to romance/career and finances although they need to take care of health if they have a bedroom in the south and place cures regardless.

Whilst the energy is very good a special enhancer is needed in the south to enhance and protect your wealth and business, especially for the middle female as the south is a Li trigram which can affect the lungs and head so caution and cures are needed for those who smoke or suffer with stress. Check outside the south of your home for any poison arrows pointing towards it, if there are hang a ba gua mirror outside pointing towards the offending object. Relationships and romance can also be very good in these areas once activated.

If you activate certain areas of the home it can bring in new opportunities, gains in financial investments, academic success and also romance and relationships as peach blossom is very good in 2012. The strength of these characteristics will differ in varying degrees according to the effect of the visiting monthly flying stars and worth checking back with us each month to see how the monthly stars are doing and what precautions you need to take.

If the south is a bedroom, office, study lounge or other important room you should place a wealth protection amulet Lung Bei Qian which a special arrangement of coins with a large Dragon and Phoenix yang coin is displayed so the Dragon & Phoenix are showing and the three smaller coins are yang side showing, which means you would see the four Chinese characters facing out. The four coins are carefully tied with auspicious red ribbon with a Chinese lucky knot at the top with yellow binding at the bottom.

This is a very traditional and authentic enhancer for the #1 flying star that occupies the south palace in 2012.

You also use this powerful and much needed cure to weaken the undesirable influences of the monthly stars #2 and #5 which will visit in June and September 2012 and the reason why they should be placed. These powerful cures and enhancers are very important in 2012 and comes standard in all our **2012 cures and enhancers kit**.

Blues, black, grey or charcoal would be a good colour scheme for a room in the south in 2012. These colours can also be used in bedding, throw-overs, lampshades, pillow covers etc. If you have a bed located in this area, remember to place a brass wu-lou beside the bed. Avoid fire colours like red, pink, purple, orange, lilac etc in the south and also avoid candles at all costs.

Businesses' that deal with money like a bank or share dealers and even casinos or betting shops can expect better times if they have an office or main door in the south and a good enhancer for this type of business is a Wu Lou talisman (Gui Fu Shu) talisman although this enhancer is good for any business or home.

This combination is good for career opportunities and excellent social status and If you have a 3-legged Toad this is where you could place him, either here or west or northeast.

This combination can cause eye and heart related problems and can cause problems with miscarriages. You should add some succulent leafy plants to help dissipate the fire energy if this is an important room.

If this combination falls into an office, you should try to keep the land outside your property open and clear; it is also beneficial to you if you keep windows and doors open as much as possible whenever security and climate will allow you to do so.

### **Summary for year 2012:**

The best months for the south are February, March, May, July, October, November and December.

Take extra care in the months of April, June, August and September and check back here to further analyse these months.

You can also place a moving (yang) water feature in the south in 2012 to get a better idea of whether to use water for wealth, it is a good idea to create a flying star natal chart of your home and then decide, or if you want the easy way look at our **2012 Feng Shui software** as this not only calculates it also advises on placement for wealth, health, relationships and every other aspect.

### **Enhancement summary and advice.**

- A brass Wu-Lou is advisable for a bedroom that falls into the south along with all shades of blue, black, grey or charcoal colours. This is especially so if you are not in good health and if you cannot buy a wu lou place a heavy round object close to your bed.
- Place a wealth protection amulet Lung Bei Qian which a special arrangement of coins with a large Dragon and Phoenix yang coin is displayed so the Dragon & Phoenix are showing and the three smaller coins are yang side showing which

means you would see the four Chinese characters facing out. Go to our **2012 cures kit** for details to see what they look like. If you cannot place this cure use a round metal coin as large as you can get and place along with three smaller coins.

- Avoid candles or fire colours like red, pink, purple, orange or burgundy in the south in 2012, blues, blacks, grey or charcoal are good colours to use.
- Metal objects are good to place in the south in 2012.
- Place creative enhancements like displaying an abacus, calligraphy set, artist tools like canvas, brushes etc.
- Naturally not as powerful but round metal shapes are an alternative to using Feng Shui items but avoid sharp or menacing looking metal objects.

### **Kun 2 Black** 坤 the Kun 2 Black (Ju Men) visits the north in 2012

The north in 2012 is not a great area at all but with the placement of the cures and enhancers we can dissipate the energy from the #2 star. The combination of the #2 star in the north is bad earth residing in the north water area and this is a controlling force which can cause problems and you must place cures in 2012.

If your bedroom, office, lounge, main door or other important room is located in the north and you are unable to move out please read this section carefully.

Try and keep the north of your home or office as quiet as possible and avoid building work or renovations in 2012.

If the north of your home or office is a bathroom, utility room, guest bedroom or other less important room do not panic this is great news for you, and for my home this is my guest bedroom which is good but on the ground floor this is my dining room which is used often so I will be placing all cures in 2012 and I know once I have placed my cures and enhancers it should not cause us any problems.

As I said we have the #2 star visiting the north Kan palace and when we see 2 & 1 together the potential of bad luck is strong and this can cause problems related to the reproductive system and can also cause problems related to the stomach so please make sure you follow the advice in this report.

This star affects the health of those under its influence bringing with it wealth problems, sickness, disease, bad luck, stress, stomach and digestive problems, bloated feeling, gossip, back stabbing, family harmony and distress. This is especially so for people who are a Gua #1, 3 or 4. Check on this page if you do not know your Gua number **[eightmansions.htm](#)** or if you have our software you can calculate your Gua and best directions.

The 2 Black in Period 8 is an untimely star and hence its influence will be of a undesirable nature. You must place a salt water cure and six Chinese coins tied with red ribbon, metal singing bowl and also place more round metal decorative objects (provided they are not menacing looking, round shape metal is good) to dissipate its negative influence in the north corner of your home or room. Avoid triangular or sharp shapes in this area.

The most important cures to place in 2012 in the north are the salt water cure and six Chinese coins tied with red ribbon and why they come standard in all our **2012 cures and enhancers kit**.

A very powerful and commanding and much needed cure in 2012 is a cure to bridge the gap as the elements are in conflict between earth and water. The traditional cure is placing a single Elephant with his trunk raised standing on a round amulet plate which must be round as round is the element shape of metal and the whole cure including the Elephant

must be gold in colour as this also represents metal. This is an important cure especially for those with an important room in the north.

Make sure there are no red items, bright lights or burning candles in this area. Do not worry if you have these colours already just introduce colours like white, silver, gold or copper in the way of a floor mat, cushions, throws, tablecloth or such like. If you have a main door that falls in north in 2012 you would be advised to hang a Ba Gua mirror outside to deflect the negative energy.

Ladies expecting should try and avoid using a bedroom if it is located in the north. If there is no choice, try to use a good (northeast, west or south) sector of the room and install the needed cures. You should also sleep with your crown of your head in your personal Tien Yi direction. Males who spend a lot of time in the north should be careful of what they eat in 2012 and a good time to think about a lifestyle change.

If you cannot avoid using this room or this corner of the room, place a brass Dragon beside your bed. The brass Dragon gives elemental support to the north in 2012 and also symbolises good health and dissipates the negative energy of the #2 star. Because the north is associated with the youngest male, the home or business can be affected so make sure if he sleeps, works or spends a lot of time in the north all cures are placed. Be very careful in May, July, September and October 2012 as the north is at its worst then.

More importantly, do not decorate the north room with red fire colours or triangle shapes items and most important avoid burning candles or leaving bright fiery coloured lights on for too long during the year.

Good news for those who are Gua 9 or 2 as this combination whilst on the whole is very bad it can be good for them in wealth and career, you will still need to place the recommended cures as detailed here but the effects of the #2 black will not be bad for you and can even give you positive results.

### **Summary for year 2012:**

Do not activate this area with loud noises, keep quiet and avoid building work or refurbishment although it is not too bad. Do not use the fire element or colours red, pink or purple. Keep doors closed. Place a Brass Dragon, salt water cure, gold Toad, wealth ingot and six coins here along with metal ornaments. Use colours white, silver, gold or copper.

Take extra care in the months of May, July, September and October.

### **Remedies**

- Hang six Chinese coins tied in red ribbon.
- Place a salt water cure.
- You can use any metal ornament as long as it is not sharp or aggressive looking, and believe it or not a good cure is a round metal dog bowl or weight lifters weights.
- A brass wealth ingot is good for protecting wealth.
- Place a single Elephant with his trunk raised standing on a round amulet plate.
- A metal singing bowl is very good as is a stainless steel Dog bowl.
- Avoid using red fire colours in this room and refrain from displaying triangle shape or fiery pictures.
- Avoid candles or bright lights at all costs. Check or upgrade smoke alarms and other fire prevention methods.

- Place a Ba Gua mirror in the north outside only and use a wealth protection Ba Gua mirror.
- Not as powerful but round metal shapes are an alternative to using Feng Shui items but avoid sharp or menacing looking metal objects.

**Chen 3 Jade** 三 震 the sound of Lu Chun #3 Jade can be heard in the southwest palace in 2012 and this is not a nice combination at all.

The southwest in 2012 is probably one of the most afflicted and special cures are needed as this combination of flying stars is known as "Bull fight sha" and believe me it lives up to its name and quite hard to control, in fact you cannot control it, you have to dissipate and weaken its energy and this is done with a powerful combination of four protection Buddha's known as a Si Bo Zhi which translate into four Buddha's of protection and creation cure and because this cure is essential in 2012 we have included it in all our **2012 cures and enhancers kit**.

You must be aware of possible theft, arguments, disputes, hot tempers, loss of wealth and legal problems especially if you have a main door or important room in the southwest. Those of you with a middle daughter also need to take note but do not start worrying, with the cures and enhancers in place you will avoid many problems.

Try and keep the southwest of your home as quiet as possible and avoid building work or renovations in 2012.

To remedy its effects use red decorative objects, candles, lamps and lights. A nice simple cure is a red, pink, purple, burgundy (fire colour) floor mat or a table lamp with a red shade. Do not use metal (metal colour is OK) to control this energy for you will aggravate it, restricting the beneficial influence brought by auspicious monthly stars in certain months and magnify its negative influence.

Do not have a water feature inside here unless a professional Feng Shui Practitioner has advised you.

Some books or websites you may have read will tell you the #3 wood star can be a good star in period 8 (2004 – 2024), in our opinion it is still an unpredictable star and you should not try and activate it unless you are qualified to do so or you have used our Feng Shui software. It will become more usable towards the mid to later part of the 20-year period 8 cycle.

I have seen a couple of websites and books even recommending placing water here for the annual #3 star, do this and you could invite arguments, wealth problems, divorce and legal problems, without taking into account your land formations, period, mountain and water stars, please be very careful.

I am not saying these people are wrong to recommend placing water; I am saying that you should take into account the bigger picture before using such a powerful enhancer like water on a known unbalanced star at this particular time in the twenty year cycle. I have used water many times on this star with good results but have also used water and got disastrous results, it really depends on other occupying stars, land formations and also the gua Trigram of the occupants, please be very careful of this unpredictable flying star.

Ensure that documents signed during the year are checked through thoroughly before committing. The influence of a Chen 3 in Period 8 denotes possible arguments, disagreement, back stabbing and in extreme cases, this can result in lawsuits, either as a petitioner or a defendant and also causes loss of wealth.

Either way there will be a loss of time, energy and wealth, so please be careful during 2012 especially if you have a main door in the southwest and if you can, try and use another door to enter and leave. You should also hang a Ba Gua mirror with a Chinese i-ching coin on the rear for added protection in 2012. The reason why it is very bad in 2012

is because when the #3 star flies into the southwest Kun palace which is an earth element, wood and earth elements are in not harmony and can cause problem without a cure.

An imperative cure in 2012 to protect against legal issues, gossip and loss of wealth is called a four protection Buddha's known as a Si Bo Zhi which translate into four Buddha's of protection and creation cure and because this cure is essential in 2012 we have included it in all our **2012 cures and enhancers kit**.

#### To calm interactions:

- Place a light in the southwest if you have a choice, a lamp with a wooden stand and a peach/red shade is better.
- Do not hang wind chimes of any material in the southwest in 2012, especially metal wind chimes as it will worsen matters. If you have been advised by a professional Feng Shui master this is fine.
- During hot summer months, make sure the fan is not located in the southwest.
- Take extra security measures for the whole home or business during 2012 and check smoke alarms.
- Check through everything before signing documents if office or other important room is in the southwest.
- Try and keep this area quiet and do not disturb with loud noises.
- Try not to let children or noisy animals play in the southwest.
- Beware of backstabbing, as sometimes it is unseen and behind your back and also from someone you thought you knew quite well.
- Invest in a good compass and avoid placing machines like a TV, fan, fax machine, computer or any machines that creates noise or vibration in the southwest of any room.
- Most important is not to disturb the ground inside or out.

**Sun 4 Green** ☰ ☱ Sun 4 Green Wen Qu literacy and romance star elegantly enters the east of the Lo Shu in 2012.

The Sun wood 4 reside in the wood east Chen palace in 2012 and this is a conditional star but is auspicious in Period 8 (2004–2024). It governs romance, career, travel, creative, academic and artistic talents, wisdom and intelligence as well as self-development. With the wood of the #4 star combined with the wood Chen energy of the #3 star this is a harmonious relationship even though the #3 star is considered negative and we can expect a lovely energy from here as it creates a lovely peach blossom if activated correctly with the right enhancers.

If you want to enhance this wonderful star you must use a very special enhancer called a Yi Yuan Fu enhancer and considered one of the best kept secrets in Feng Shui and there are not many Feng Shui masters who even know how to create this very special cure and it is not just about the content but the thought form and ground quartz crystals embedded into the paint that is used to inscribe onto the brush holder with the engraved talisman and thought forms placed inside the quartz crystal making this an essential cure in 2012 for the east romance star and anywhere you have an auspicious #4 star.

We have had a very special talisman hand engraved onto a calligraphy brush rest and empowered with sheng chi red paint containing crushed crystals along with a thought form quartz crystal placed on top of a beautiful fire coloured ang pow with a talisman on the rear for the year of Yang Water Dragon and then you need to write all of your wishes, a

superb enhancer not just for romance but also for career, wealth and business. This cure and enhancer is so important in 2012 and why it comes standard in all our **2012 cures and enhancers kit**.

Whilst this star is very auspicious without cures this #4 star can bring both wanted and unwanted romantic opportunities to the home if the cures are not put in place. Having a door in the east with the cures can bring in new opportunities and lots of travel and a perfect cure for a company that deals with travel or printing.

Do not use fire or metal in this area or colours white, silver. Do not worry if you have these colours already just introduce colours blue or black in the way of a floor mat, cushions, tablecloth or such like.

As in every star, the 4 Green has a positive and negative aspect to its nature. Although a favourable annual star in 2012, it can also be affected by the presence of an unfavourable monthly star and when it does, it denotes betrayal, heartbreaks, scandals and humiliation in affairs of the heart. The affected months are February, March, July, September, November and December. So keep an eye on our monthly updates. Treat this area as your relationship and creativity area for 2012 it can be very good for you. If the east is an important area like a main door, lounge bedroom etc please keep it is clean and clutter free as possible, believe me it makes so much difference.

Couples with a bedroom in the east can also enjoy good relationships. There may also be a chance of producing intelligent children. If you want to enhance this further place a statue of Kwan Yin in the east or west part of your bedroom.

The #4 star governs relationships so a nice romance enhancer is a pair of Mandarin Ducks.

Another traditional way to enhance fertility is to display peanuts in shells (groundnuts) or any seed products like black or red melon seeds (Gua zi). In Mandarin, peanuts are called 'hua-sheng' and for the Chinese this word is onomatopoeic in that the sound of it means the birth of many children. You should display them anywhere in the bedroom and of course be careful if anyone in the home suffers with nut allergies.

As I said above the most important cure is the Yi Yuan Fu enhancer and such a lovely enhancer overall although if you cannot use this write down all you want to achieve in your life and place it in the east of your home or office and when you write down your wish list try and visualise the positive outcome you are looking for, it really does make a difference.

**Summary for year:** With the above cures and enhancers in place you should reap the rewards from this area especially if you are looking to enhance relationships or creativity; this area is very good for writers, artists, students and anyone that is related to the travel, crystal, alternative, health industry.

Avoid fire element and colours red, pink or purple. Good colours are blue, grey or black. If you wish to enhance areas of creativity and academic achievements, place or hang moving objects to enhance the Ch'i of this sector, do not use wind chimes. Keep this area semi active with windows occasionally open. Do not use metal items here especially wind chimes from the 2012 cures. Spend time in the east if you want to enhance romance, creativity or academic pursuits.

#### **Cures and enhancers summary:**

- Use blue in your décor if this is your office or bedroom.
- Make sure you remove all the metal cures like the salt cures and six coins in a row from the 2011 cures and enhancers kit from the east as this will cause many relationship problems if left in 2012.
- For office and studies, place a task light and a crystal globe on the work desks.

Blue items can be added on the desk e.g. blue paper, blue books etc

- Avoid displaying metal objects here especially large heavy ornaments.
- Fresh flowers or small pots of green leafy or flowering plants can be displayed in this spot of the house to lift the qi. Blue or green flowers are a good choice.
- If you have mandarin Ducks this is a good area to have them and any other symbols of romance like hugging couples etc.
- Place photos of loved ones or images of love to enhance relationships or attract new love. This can be photos, paintings or statues make sure there is always a pair in the image.
- For romance a Dragon headed Tortoise or Mandarin Ducks are very good

**The 5 Yellow** In 2012, the annual 5 Yellow Lian Zhen star of tragedy is positioned in the southeast Sun palace.

The southeast is the worst area in 2012 and you must be aware of possible theft, arguments, disputes, hot tempers, loss of wealth and legal problems especially if you have a main door or important room in the southeast. Females also need to take note but do not start worrying, with the cures and enhancers in place you will avoid many problems.

With this annual inauspicious #5 yellow earth star destroying the #4 wood star of the southeast along with tai sui grand Duke you must place cures otherwise it can cause many problems.

The most important cure other than the salt water and six coins tied with red ribbon is the a strong earth element crystal (Zong Shi) which is blue aventurine with an auspicious dual Dragon Chinese i-ching coin placed on top alongside a piece of green moss quartz crystal which is said to protect and enhance mind and mood along with the aventurine which is cleansing and healing and protector of psychic attacks. You cannot use a normal i-ching coin though, it must be a dual Dragon i-ching coin (Liang Lung). The two crystals along with the Liang Lung i-ching coin make this a powerful cure and enhancer in 2012. I really do love this cure and enhancer. These crystals have been cleansed of negative energy and empowered with positive Sheng Ch'i energy, which is said to bring wealth, health and good luck. This cure is also a good crystal to energise and clear negative energy in a room.

The advice I have given over the last thirteen years always comes from the heart and I try to make sure that those who do not use or cannot afford traditional Chinese cures like a **salt water cure** or six Chinese coins tied together with ribbon, that there are always alternatives you can safely use. Use plenty of good quality metal in the southeast this year and make sure you cleanse all your cures from previous years. Good shapes are items made from metal that are round, even a stainless steel dog bowl is a good cure.

Do not to disturb its position here with noisy activities, renovations or maintenance work. Homes with gardens in the southeast of the property should avoid disturbing the ground with major digging or building work in the southeast in 2012.

The 5 Yellow also called '*Wu Huang or Lian Zhen*)' in Chinese, is one of the bad annual afflictions. It is an extremely unstable star. It has no gender and no trigram and is highly treacherous when disturbed. When disturbed, its malicious influence brings tragedy, sickness, lawsuits and major loss of wealth. Do be careful with it. Stillness together with metal cures can keep its negative influences at bay and you must avoid using fire energy like reds and candles in the southeast in 2012.

As we have so many negative afflictions in the southeast with the annual #5 yellow along with Tai Sui Grand Duke you must place a salt water cure, six rod wind chime, Wu Lou and six Chinese coins tied with red ribbon and also place more metal decorative objects (provided they are not menacing looking, round shape metal is good) to dissipate its negative influence.

All these cures are essential and why we have included them as standard in all our **2012 cures and enhancers kit**. An alternative cure is place some very heavy good quality round metal objects in the southeast in 2012, I do not give this advice so you have to buy from us, most of these cures and enhancers I recommend you can put together yourself.

You **MUST NEVER** disturb the southeast inside or out with lots of drilling or knocking activities. So please be careful when you hang your metal six rod wind chime to control its influence in the southeast sector of your house. You should also place a Ba Gua mirror especially if you have a main door here.

You must **not** place red objects, bright lights, candles or red coloured furnishing in the southeast. Do not worry if you have these colours already just introduce colours white, silver, gold or copper in the way of a floor mat, cushions, throws, tablecloth or such like. You can also use dark blue or black if you prefer.

If your bathroom, cloakroom, en-suite, guest room or a large cupboard is located here, this is good for you this year, because these areas are not used much and therefore the negative power is not activated, I would still place the cures though regardless of what room is located in the southeast.

It helps if you can do a natal chart of all the other flying stars in your home as there is much more you can do to protect yourself, if you know how to do a flying star chart it is worth doing or maybe consider buying our specialist **Feng Shui 2012 software**, it is worth every penny and can save you from many disasters, you will not find any better than this software as it not just tells you where the problems are, it tells you how to correct them or enhance the good areas, it is the industry standard in Feng Shui and used by thousands from all over the world.

### Summary for year 2012:

Do not activate the southeast with loud noises, keep area quiet and avoid at all costs building work or refurbishment. Do not use the fire element or colours red, pink or purple. Keep doors closed. Place a six-rod wind chime, Wu Lou, salt water cure and six coins here along with metal ornaments. Use colours white, silver, gold or copper. I will repeat this part, as it is so important, please keep the southeast of your home or office as quiet as possible, avoid redecoration and building work in 2012 in the southeast part of your home or office and when you hang your wind chime try not to make so much noise with hammers etc, don't worry about the noise the wind chime makes, this is all part of the cure, so when it is in place try and remember to knock it a few times a day.

Take extra care in the months of March, April, August, October and December.

Every year we put together a powerful cures and enhancers kit and this year it is even better and more powerful than ever and don't just take our word though; **click here** to read hundreds of testimonials that we have had over ten years from every corner of the world.

Please remember that **Tai Sui (The Grand Duke of Jupiter)** resides between 112.5° - 127.5° southeast in 2012. It is vital that you must never sit facing this 15° sector. If you confront him, you will experience defeat, demotion, loss and obstacles. Instead, sit with your back to this sector and he will support you.

Do not undertake any form of noisy renovations or re-decorative work in this part of your house or office between February 4<sup>th</sup> 2012 and February 3<sup>rd</sup> 2013. Nor should you disturb the ground by digging, building foundations or conduct any maintenance work with any noisy equipment in this area inside or outside your property or garden. Once disturbed, this affliction will bring about three types of misfortunes – financial loss, sickness and arguments. This is the worst out of all the annual afflictions and in our home and business we take this very seriously as in our 31 years' experience with Feng Shui we have seen some pretty nasty events from this energy when disturbed.

### To calm interactions:

- Avoid playing loud music in the southeast of the home or room.
- Do not decorate your southeast room with red or earth colours this year. Grey, blue or white beddings and curtains are good colours to use temporarily.
- Place a salt water cure in the southeast of the building along with six Chinese coins tied in a row with red ribbon and six hollow metal rod wind chime.
- The six coins in row and salt cure are a crucial cure to place in 2012, please do not forget it.
- Place a Brass Dragon in the southeast corner of the room if this is your bedroom.
- Metal objects such as six Chinese metal coins tied in a red ribbon and/or a brass Kwan Yin can be placed in this corner too. Do not to use red dragons.
- Do not place red objects, burning candles or triangular shaped furnishing in this sector.
- Most of all, avoid disturbing the southeast at all costs. Any form of renovations that needs to be done, plan it for another year. It is worth keeping this in mind.
- Replace or at the very least cleanse your Ba Gua mirror in the southeast especially if you have a door here.
- If you have a main door in the southeast make sure you oil the hinges and try not to let it bang shut and oil squeaky hinges.
- If you use a fan or other machines that create noise or vibration try and avoid placing it in the southeast part of a room.

**Ch'ien 6 White** ☰ 乾 The star of Heaven Chien 6 White (Wu Qu) sits in the centre palace in 2012.

The #6 white star is a compassionate money star and as an annual star, its position in the centre in 2012 is good for career, wealth, politicians, leaders and anyone involved in the jewellery business, those with an office/study in the centre will benefit greatly.

Whilst 6 White star signifies success, if the #6 annual star is located in a bedroom it can cause problems with the throat and/or legs and also problems with breathing especially for the eldest female although they are minor problem and nothing to worry about if you follow the advice here. If you do have a bedroom in the centre place some blue, black, grey or charcoal cloth such as a rug or duvet covers to dissipate its energy.

There are no annual cures to place in the centre this year as its effect are small and whilst you will find many websites telling you to buy this that and the other there are none needed other than maybe introducing some water colours like blues, black, grey or charcoal and you can do this with bed covers, rugs, curtains, cushions or pillows.

### Summary for year 2012:

#### Enhancers and cures if needed:

- If this is your bedroom, a shade of blue or black in your furnishing or décor may help with health. A blue painting (not water scene) may also do.

**Tui 7 Red** ☱ 兌 The Lofty breeze of Tui (Po Jun) flies into the northwest in 2012.

The mischievous Po Jun #7 argumentative red star is a negative influence in Period 8. The trigram Tui is also known as the 'Broken Soldier'. This is a fighting star which can cause problems if left alone especially as it has flown into the northwest which is a metal area and whilst this puts metal and metal in neutral it can still cause conflict and denotes assault, deceit, violence and robbery. This area is not good for writers, artist or children studying and especially so for females although cures can be placed to dissipate the negative influence so do not worry.

The #7 Red indicates a high risk of burglary, deception, copyright theft, gossip and backstabbing especially in the months of March and December.

If you have a door that is used often in the northwest or even a window you should be looking to update security, smoke alarms and checking electrics.

In 2002 we had a similar combination in my home and where it was I had an old large aluminium sliding patio door. The only door/window in the house that had not been replaced so I thought this was vulnerable for a break-in and whilst I never think negatively I am of course realistic, anyway we spent a few thousand pounds replacing the doors and improving security. It turned out the house was fine but in the same area outside I parked my car and this was broken into and around £1000.00 worth of sat nav, cameras, wallet etc were stolen, talk about "not seeing the wood for the trees, all I thought of was protecting my family so actually great news and superb Feng Shui that it was only the car. So please take my advice and have a good look at the security in the northwest of your home checking windows, doors, sheds and of course make sure you lock your car or van.

An imperative cure in 2012 and because the annual afflictions are so bad in the northwest, you should place a gold coloured Pi Yao in the northwest facing towards the southeast. This cure is one of the most protective cures you can use in Feng Shui and also a powerful enhancer but also for protection against legal problems, arguments, disputes and loss of wealth. The Pi Yao is an extremely powerful Dragon that is used to appease the Grand Duke Jupiter (Tai Sui). In business they are placed on the office desk giving you total power. In 2012 you need to place him in the northwest of your home or office to enhance and protect wealth.

You should also hang a Ba Gua mirror with a Chinese i-ching coin on the back for added protection in 2012 in the northwest especially if you have a main door here.

A traditional cure and enhancer for the #7 star is the Shuang Ding cure - the unique way the seven i-ching coins along with the dual ingots have been arranged gives balance to the yin and yang when the #7 star visits the northwest palace, as the small metal and large metal meet with this cure the elements balance each other. This cure protects against theft, fraud, gossip, lies, legal problems and wealth loss along with health issues relating to the lungs.

Sorry to harp on but please take extra security measures especially if you have a front, back or side door in the northwest sector. Make sure doors and windows are fastened securely before leaving the house. Do not display valuable items on windowsills, which may attract the interests of passers-by.

**Summary:** Keep the northwest quiet and doors and windows kept closed. Good colours are blue or black and a quick and easy way to introduce them is with a doormat, floor cover, rug, bed cover etc. Avoid earth and fire colours and quartz crystals.

#### **Summary for year:**

If you have an office or door in the northwest be careful of people trying to deceive you, robbery, arguments and loss of wealth, always look at the very small print and be careful as this star normally causes problems with people you know and thought you could trust.

#### **Remedy:**

- You should also use more blue, grey, black or charcoal colours in your decoration. You can introduce the colour with cushions, rugs, bed covers or doormats.

- Do not use anything of fire element or colours red to control it as this may aggravate it.
- Avoid candles in the northwest at all costs.
- Install or service/upgrade smoke alarms and security systems.
- Do not hang metal wind chimes here.

**Ken 8 White** ☰ ☱ Zuo Fu flies gently into the west.

This is the most auspicious governing flying star for the next twelve years of the lower era of the sexagenarian cycle of the flying stars (Xuan Kong) system and is located in the west in 2012, because this lovely earth star flies into the west which has a metal energy this can have an effect on wealth in 2012 and specialist cures and enhancers are needed.

Sadly my prediction will be the same as a few years before, in that it will be a year of very slow economic growth again with high inflation. So be prepared although if you follow the advice here the year could be much better.

If your main door, office or other important room is located in the west, wealth, fame, romance, prestige and distinction can be expected especially if you have a main door here, even if you do not we can still activate it. When activated correctly it brings good fortune and exciting times even with the conflict of elements. Placing the Ba Gua Shi Master cure in the west of your home or office actually remedies this area and in fact releases all its positive attributes.

The most influential and imperative cure and enhancer in 2012 is called a Ba Gua Shi Master cure and can only be used in Ren Chen (yang water Dragon) year, the last time this powerful cure would have been used was in 1952. This cure is needed to enhance and protect in 2012 especially for the female of a home or office.

This cure is only known to a few specialist Feng Shui Masters and in the old days and even now in Asia you would need to employ an expert Feng Shui Master to call at your home or business and the Master would spend hours carving the secret inscriptions onto an earth plate shaped in a ba gua eight sided piece of the finest slate or marble, which would then be placed in the west of your home or business and then setting the special quartz crystals, i-ching coin and the magical arrow head (Shi) placed on the ba gua earth plate would have a marking on it showing that the arrow must point towards the Sun palace of the southeast as this is where the #5 yellow star along with Grand Duke (Tai Sui) is located in 2012 and you must have protection against loss of wealth in 2012.

This is one of the most powerful and commanding cure and enhancer for wealth, health, relationships and protection in 2012 and because this cure is essential we decided to include it standard in all our **2012 cures and enhancers kit**.

If you work with symbols, quartz crystals, crystal balls or hanging faceted crystals are very good for the west this year. The #8 star also governs relationships so a nice romance enhancer is a pair of Mandarin Ducks.

A lovely enhancer for the west in 2012 is a Quiang Dragon designed to exact measurements and shape depicting a beautiful carving of a Dragon chasing a pearl. With the #8 wealth star visiting the west Tui palace, which is earth meeting metal and not a great combination you need further cures to protect wealth in 2012, the design of this crystal Dragon is perfect in that the base is an earth shaped plinth of perfect proportions and this sits solidly on an auspicious Chinese –ching coin in positive yang position thus symbolising holding and protecting wealth in 2012 and this with the triangular fire shape of the upper section provides even greater protection and also creation of wealth in 2012.

Whilst wealth is forecasted in 2012 for the west, beware of overworking as this can cause you health problems. The additional work will bring a good income but be careful of your

health; in particular stress related resulting in high blood pressure or kidney problems.

Do not place heavy metal in the west of your home or office this year, as it will weaken the good earth.

Once you activate with the earth plate cure this is a very strong wealth, success and romance area for 2012 so try and store your important financial papers here like pensions, stock portfolio etc in the west. If you use symbolic cures this is where you should place your three-legged Toad facing your Sheng Chi direction for wealth or a pair of Mandarin Ducks for romance.

### Summary for year.

Take extra care with health in the months of February, April, June and July.

### To enhance:

- Hang a faceted crystal sphere in the west of the house. Hang it above head height and twist now and again.
- The energies of the annual 8 can be activated by human activities. Use this room as frequently as possible unless you have received professional advice against it.
- A red three-legged toad can be placed here. Make sure the toad is facing into the house and not towards the door and the coin is never taken out of his mouth.
- Introduce some fire colours into the centre to balance the energies, a quick and easy way is using bed covers, rugs, table covers, sofa throws etc.
- If your bedroom is here, you can also place an amethyst or any crystal items in the west of the bedroom to further strengthen the earth element of the benevolent 8.
- This is also a good study area for children. Place a task light and a crystal globe on the desk to enhance concentration.
- Keep this area active with open windows and doors (yang energy).
- Keep the area outside and inside the northeast, west, south and east as clear clutter free and open as possible, you need to let the auspicious Qi collect here and distribute inside and outside, when this happens it is known as Ming Tang (明堂), this is a collection of Sheng Chi (auspicious energy)

**Li 9 Purple** 離 (You Bi) Li 9 Purple is found in the northeast 東南 palace in 2012 and this is a lovely combination of fire creating earth although it still needs two very important enhancers to activate this combination.

The 9 Purple is the star of future wealth and has an auspicious influence in Period 8. Career opportunities and promotions are probable especially if you have an office or main door in the northeast in 2012. There is fame and acknowledgement, growth and improvement.

This is a good area in general especially for those in studies. If this is a family area (living, dining or a library), encourage children to study here.

Couples with a bedroom in this location can also enjoy good relationships. There may also be a chance of producing intelligent children.

An important enhancer to use this year is a pair of male and female chi lin's as it can be very good for wealth, career and business although you must use only male and female chi lin's and most pairs bought will come as identical pairs so please be careful placing if you

do not have a gender pair. The best way to check is, as you look at them, the one on the right hand side should have a ball under his feet; the ball represents the world and this one is the male. The other left hand one will have either an ingot or cub under her foot this one is the female.

Chi lin's are also renowned for protection of wealth and against bad luck and the creator of wealth and good fortune and why we had this combination created. Made from resin and looks like Cochin ceramic, each hand painted to a very high quality, standing on a wooden plinth. They should be placed in the northeast in 2012 or placed looking onto a main door or a windowsill looking into the room. Every home and business should have this powerful and most beautiful cure and enhancer.

Another important enhancer used for thousands of years was a combination of two large real diamonds with eight (Ba) facets along with nine smaller diamonds (eleven in total) and you would place a solid gold i-ching coin alongside the eleven diamonds along with a piece of petrified wood quartz crystal. The idea of having eight facets on each diamond is that it had to be placed in the northeast sector of a building and the northeast is associated with the Ken Trigram which is an earth based #8 star and when combined with an annual #9 visiting star this little known and powerful cure is needed and because it forms a unique combination it is said to magnify your wealth luck by eight times.

Obviously to do this for the average person like us it would cost hundreds of thousands of pounds and this cure is the next best thing if not better. The quality of the auspicious i-ching coin, petrified wood quartz crystal and glass diamonds we have selected is quite stunning and it forms part of a sheng chi cycle in the five elements which is crucial in this cure and enhancer. This is always used with the #8 star especially when visited by the #9 star as fire enhances earth and it needs a catalyst to activate it and this cure and enhancer is only known to a few masters.

The actual element sheng chi cycle is made up with eleven pieces of glass shaped into a fire diamond which provides fire of the shape, fire of the colour of glass which is a mix of pink, clear and amethyst, you then have the earth element in the glass material and some of the diamonds are clear glass giving a water element, you then have a i-ching coin providing strong metal, the petrified wood of course is the wood element and also earth and of course the inherent earth energy of the northeast ken Trigram thus giving a perfect sheng cycle of all of the five elements giving flawless harmony and balance.

As both of these cures are essential in 2012 we have included them standard in all our **2012 cures and enhancers kit.**

### **Summary for year:**

Be aware of the negative influences during March, May and August and check the monthly Xuan Kong flying stars.

### **To enhance:**

- Healthy green leafy plants or blue flowering plants such as violets are good for this area.
- Fresh flowers displayed here will bring positive qi too.
- Symbolic objects such as a set of six Chinese coins can be placed here all year round to enhance benevolent influence and at the same time dissipate the malevolent influence by the visiting monthly #2 and #5.

Spend as much time as you can reading this report, save it and print it to read at your leisure as it can save you from a lot of problems. You don't have to buy any cures and enhancers and I hope you agree I have always given you alternatives to the traditional cures and enhancers but if you do decide to buy a cures and enhancers kit you should read what some of our clients say about annual cures kits, not only do they offer you protection

they enhance the beneficial areas, click on the banner below to read some of the thousands we received over the years.



### Water placement in 2012:

As we entered period 8 (4th February 2004) the use of water outside is critical up until 2024, so a pond outside in the correct area can really work in your favour. You must not unless advised by a professional Feng Shui consultant place water outside in the north-east up until 2024.

**Outside water in 2012:** Can be placed in the southwest or east, this is your primary and secondary wealth areas for the next twelve years. In 2012 water outside in the southwest is very good but it would not be advisable to install a water feature this year though as the annual flying star is inauspicious, if you know what your natal chart (flying star chart) is and you also have a good facing star this would make a very powerful combination for wealth. If you do not know what your natal chart is or do not know how to create one take a look at our Feng Shui software as it does all the work for you, **follow this link**. Because the southwest is afflicted in 2012 I would not advise digging or disturbing the SW in 2012 but if you want to place a mobile water feature in the SW this is fine although still check with your Feng Shui Practitioner or use our Feng Shui software.

**Indoor water for 2012:** You can use a moving water feature or aquarium in the northeast or west in 2012. Do not use water in any other compass sectors unless you have had a professional Feng Shui consultation or use our **Feng Shui software**.

If you are using water you must make sure the water is clean and flowing and never allow it to become stagnant. Water is a very powerful enhancer and is the essence of Feng Shui (Shui meaning water) the Ch'i is caught by the water and cleansed (providing the water is clean) and distributed throughout your property. If you look on our **resource pages** you will find more detailed information on water placement for 2012 and beyond.

Whilst the methods above are considered safe, there are many exceptions to the placement of water and as Master Practitioners and **teachers** we use many more methods of water placement for wealth, education and relationship, these methods whilst extremely powerful can only be used with expert guidance and a full analysis of your property and land formations, please visit **this link** for more details of an on-line consultation or home/business visit. Or consider our powerful **Feng Shui 2012 software**.



### Salt water cure after 4 weeks.



Every year we receive thousands of e-mails saying how the **salt water cure** changed the energy in their home for the better; this is a very powerful and little known cure and one that we have been using for over twenty years. You should use the salt water cure this year February 4th 2012 in the southeast & north (**DO NOT REUSE LAST YEARS SALT WATER CURES IF IT IS MORE THAN TWO MONTHS OLD**).

There are many exceptions to be made, the thing to remember with flying stars is, if you have a 5 yellow in a dining room and if it is an open plan home the 5 yellow's power can drift into any other part of the home, think of perfume, if you sprayed some in your bedroom your partner may still be able to smell it downstairs because the smell goes into the air (Ch'i) and drifts around the home, so as general advice it is better to cure than leave to chance.

### How to dispose of your old salt water cure?

You should change your salt water cure every year, why? Because they store an enormous amount of negative energy and moving it causes problems in all parts of a building. The best way is to get a Tupperware type container (margarine tub etc) and place the entire contents salt, water, glass and coins into it, close and seal the lid and throw straight into an outside bin. If you do not have a container pour the water down an outside drain (one at the back of house that leads away from the building) and place the salt/glass and coins into a plastic bag and place in bin. Please do not try and recycle, it is not worth it, this is the main reason we sell ours so cheap to make sure people can easily and cheaply renew them. Last year I saw a few websites selling these for 4-5 times as much as us. As with all our products they are cleansed of all negative energy and empowered with positive energy and the coins also come from a good dynasty making them even more effective.

If you want to be kept up to date with the monthly flying stars click on the link towards the top of the page to join our free monthly newsletter, it is read by over 85.000 Masters, Practitioners and fellow enthusiasts from all over the world.

**Read What Our Customers Say**  
**火 About Our Cures Kits 戌**

Tell a friend  
about this page 

**Visit the pages below for further details on 2012 Chinese New Year etc.**

**Chinese New Year 2012 \*\* How to make your own Ang Pow \*\* Chinese Talismans for 2012 \*\* Chinese animal predictions for 2012 \*\* Flying star Xuan Kong 2012 \*\* Salt Water cure information\*\* Avoid the fury of the Grand Duke, three killing 2012\*\* Chinese New Year world time converter 2012\*\* 2012 Cures and enhancers kits \*\* How to take a compass reading \*\* How to determine your facing direction \*\* Feng Shui software \*\* Feng Shui resource \*\* 2012 Tong Shu Almanac Software \*\* Feng Shui Blog \*\* Chinese culture \*\***



© Michael Hanna - Feng Shui Store 2012

The below copyright information does not apply to anyone who wants to copy our content or send to a friend or even store on your computer for their own personal use and development. Please feel free to copy and paste or share with as many people you like.

The below is intended for the people who steal our content and claim it to be their own work.

We are more than happy to share our content; all you need to do is give us credit for our hard work and a link back to our website. Contact **[michael@fengshuiweb.co.uk](mailto:michael@fengshuiweb.co.uk)** for more details.