

Feng Shui Store
2 Douglas Road
Aylesbury
Buckinghamshire
HP20 1HW
Great Britain
Tel: (0044) 01296 399100
Fax: (0044) 01296 582889
www.fengshuiweb.co.uk

FENG SHUI
STORE

2010 Flying Stars Analysis

© Written by Michael Hanna 2010

庚寅

There will be further 2010 updates on our Feng Shui blog and Facebook so bookmark them now below...



On February 4th 2010 we enter a new Chinese year (year 4707th in the Chinese calendar), the year of the Yang Metal Tiger (Geng Yin). The last time we had a Yang Metal Tiger (Geng Yin) year was back in 1950 and this is known as a cycle of 60 which will be found in a traditional "ten thousand year calendar or our **Tong Shu 2010 software**) . The 2010 Xuan Kong annual flying stars full analysis is detailed below. Please do not get confused with solar (place Feng Shui cures – spring begins) and lunar (celebrate Chinese New Year) calendars, more on this below.

In 2010 Cures and Enhancers are needed more than ever as the flying star #8 flies into the centre palace and this can cause financial problems. Are you really prepared?

Over the last eleven years around Chinese New Year we put together a valuable and essential Feng Shui cures and enhancer's kit of little known Feng Shui cures and enhancers that can be placed at any time of the year. In 2010 the most auspicious number 8 star is trapped in the centre palace and we will need some very powerful cures and enhancers. Many of these cures and enhancers we are using in 2010 are very tightly held secrets and although many websites have tried to copy them from us, they **do not** have the ingredients right and can actually cause more harm than good. The 2010 cures and enhancers kit is not just some gimmicky cures put together; they are extremely powerful cures and enhancers that only the most advanced Feng Shui Masters and Practitioners throughout the world use and quite a few of the cures in our kits are one that many Feng Shui Masters charge thousands of pounds for. It does not matter how late in the year you place your cures kit, we have many clients who have even placed them towards the end of the year and still got great results.

The most powerful and important cure and enhancer in 2010 is called a Cui Hua Ji Master cure and can only be used in certain years and whilst extremely powerful in 2010 the only other time it can be used again inside a building is in 2019 (Ji Hai) although after 2010 they are perfect to place outside in the northeast or southwest for protection. This cure is only known to a few specialist Feng Shui Masters. In the old days and even now in

Asia you would employ a specialist Feng Shui Master to call at your home or business and the Master would spend hours carving the secret inscriptions onto an earth plate made from the finest slate or marble; this would then be placed in the centre of your home and then setting the eight special quartz crystals and would normally cost tens of thousands of pounds and obviously only available to the very rich which is still the case in many parts of the world and the reason why we create these powerful cures so all can afford them at a fraction of the cost.

With this Master cure we have not disclosed all the inscriptions, formula or even which crystals we use as in the eleven years we have been creating these powerful cures and enhancer's websites throughout the world copy our work and not only use the wrong formula but also use inferior cures/talismans and this will cause many problems. To give you an idea of the types of quartz crystal we use they range from Unakite, Rhodonite, Obsidian to Howlite. With further thought I feel that because this is such an important cure and enhancer in 2010 and whilst we sell it at a fraction of its value I know there are still many who cannot afford this (either way you will probably be hard pushed to save much money doing it yourself compared to the price we sell it at as the crystals we use are so expensive to buy individually) so I have decided to publish further details on this cure and will post it onto our **Feng Shui blog** well before the Chinese New Year in February so please keep an eye on the blog and our **Facebook page** for further details and photos. Of course you can still buy it here separately or it is included in all our 2010 cures and enhancers kits.

Each of the eight rare and valuable semi-precious quartz crystals are used to work in synergy with the inherent element of the Luo Shu Trigrams giving total protection for wealth, health & peace of mind and releasing the #8 star from the centre to permeate the whole building. We only use the finest quality authentic quartz crystals and they have to be placed exactly as shown in the enclosed instructions with an auspicious dynasty Chinese I-ching coin placed in the centre of the earth plate lo shu grid which must measure between 101 & 106mm and were custom made by us and engraved with the special and little know talismans and made from 500 million year old Snowdonia slate which is the finest quality earth element you will ever find, This earth plate must face a certain compass direction (the instructions show you how to set this cure up) even if you do not own a compass for northern and southern hemispheres so it does not matter where in the world you live. This is one of the most powerful and commanding cures and enhancers for wealth, health, relationships and protection in 2010 and because this cure is essential for wealth and protection in 2010 we decided to include it standard in all our **2010 cures and enhancers kit**.

If you want to avoid continuing wealth problems, sickness, arguments, bankruptcy, legal problems, loss of wealth, relationship problems, problems with the mouth, sore throat, chest problems, indigestion and skin problems, car accidents, accidents involving metal and water and just overall bad luck or if you want to enhance the positive areas in 2010 **read on...**

Annual Flying Star 2010



If you would like more details on the 2010 cures & enhancers kit please [click here](#).

Tong Shu Date Selection
Software 2010 & Beyond

Are you prepared for 2010?

In 2010 we have the #8 *white Star* (Zuo Fu) visit the centre earth palace and whilst #8 star is an auspicious star, the fact that it is trapped in the centre can cause many problems associated with finances and some very powerful cures are needed in 2010 to combat this. The predictions we made for 2009 were as usual 100% accurate and fortunately thousands of our clients have survived the collapse of the world markets and many other problems.

Unfortunately we are not out of the woods yet and the second half of 2010 will be recovery time although the markets may continue to see falls and gains in 2010. We may also see high inflation although there will be recovery towards the second half of the year and with the 2010 cures and enhancers in place you can avoid many problems.

Please take care again with investments in 2010 and be frugal and of course make sure you place your 2010 annual cures and enhancers as this will help lessen the effects and turn a potentially bad year into a good one.

The Tiger year is a year of change and normally with a Tiger year there is much conflict, although with cures and enhancers in place all will be well. The First World War began in a Tiger year and so did China invade Tibet along with Iraq and Sudan conflicts began. This is also a year of uncovering lies told from the past and the recent expenses claims fiasco will in my opinion reveal even more problems and it was a Tiger year that President Nixon and Clinton uncovered many discrepancies that caused many problems. I sincerely hope that the latest Royal Mail strikes do not go on for too much longer as Tiger years also create problems with unions and long drawn out strikes which for us in the UK would be a real problem and one we could do without.

This is also a year that can cause problems with health and with the recent Swine flu scare in the UK I can see this escalating and also problems with the vaccine. Even though this all sounds very negative I can also say that there will be many advances in medicine in 2010 and I will look forward to some good news on Cancer or similar research moving very close to some cures that have never been seen before.

I shall now get more positive and whilst many Feng Shui websites and books are predicting doom and gloom again in 2010, I think much good will come from all this especially with our master cure placed in the centre of the home, this can turn a bad siltation into good with this powerful and little known cure.

There are many good aspects of 2010 and if you follow the advice below you **CAN AVOID** many problems and this is the reason why we introduced our annual **cures and enhancers kits** back in 1999 so you can avoid many of the problems above. I am really looking forward to 2010 and so should you...

Those born in the year of the Monkey may be affected by the conflicting influences of the year of the Yang Metal Tiger (Geng Yin) 2010.

The degree of influence varies from one person to another. One of the major considerations is the heavenly stem of the year in which one was born, so those who were born in 1944 & 2004 (wood Monkey) will have a rougher ride than those born in 1932 & 1992 (water Monkey). Monkey also born in metal and earth years, 2010 will be better. For more information on your personal **Chinese Animal predictions for 2010 click here.**

The forecast for the Monkey may be inauspicious but please remember this is only one small influence in the big scheme of things in life. Things can turn out really well despite this, if you turn your attention to the annual and monthly flying star forecast on the energies of the space you occupy in your home and office in order to reduce predicaments. Combine this with **flying star 2010 software** and date selection software you increase your chances of a good year even more.

I have had thousands of clients over the years and each home and person I see will be different, as an example in 2010 if you have a bedroom in the southwest or northeast this can cause problems with finances, bad luck, relationships, chest, stomach and also depression and if you were a person that smoked heavily it would without doubt cause you many chest related problems, however, if in 2010 you smoke less or better still stopped smoking the risk is reduced and if you combine this with placing our annual cures and enhancers the risk is even less. There is no standard Feng Shui, one man's food is another man's poison.

Surely our 2010 cures and enhancers will make me exempt from any problems?

If your bedroom is in the northeast or southwest and you were overweight, smoked, ate junk food daily, drank heavily and a bit of a couch potato and thought that taking a vitamin C tablet at the end of the day will rejuvenate your body and mind, you are very much mistaken. As hard as this may sound, you will, I guarantee have problems in 2010 but if you make changes this year you will avoid many of those problems, placing just the cures and enhancers on their own will help tremendously but you also should make lifestyle changes as well and I think the good that will come from 2010 will be that we will appreciate more of what we have and to me this is real wealth. Please do not think I am standing on my high horse being all righteous and perfect, far from it, I am just giving you this advice as I have worked with thousands of clients throughout the world and ***I know*** the outcome.

With all that said please do not start panicking if your bedroom, living room, main door or office are located in the northeast, south and southwest, just start preparing to place your **2010 cures and enhancers kit** to ensure a trouble free year in 2010, and of course make sure you sign up for our **free Feng Shui monthly newsletter** so you are kept up to date with the monthly flying stars giving you even more control of your destiny.

I have my home office in the south and it will NOT cause me any problems at all so please take the same attitude and all will be well. I will be placing every single cure and enhancer that I talk about on these pages but I will also make some more lifestyle changes. I am 51 years old, if I am not in my car; I am on a train or a plane or sat at my desk. With my travels all over the world I eat in a lot of hotels and restaurants and whilst they are always good quality it is still not the right food for me. I do meditate nearly every day; I do take long walks twice a week and do qi gong nearly every day, however, my objective for 2010,

is to place all the annual cures and enhancers, eat better and healthier and take more exercise, this has actually been my aim since I turned the dreaded 50 and so far so good, in fact I feel more like 25 rather than 51.

As you may know we have given this advice on-line to hundreds of thousands of Feng Shui Masters, Practitioners, students and enthusiast for 11 years now and although we make suggestions on cures and enhancers we do not always agree with many websites insisting that you have to spend hundreds of pounds each year on cures and enhancers, they are simply not needed.

There are two products I do strongly recommend, which are, our **2010 annual cures kit** and the world's most powerful and most widely used all new **Feng Shui 2010 software**, with over six years in development, over 50 combined years Feng Shui experience and one year of beta testing with Feng Shui Master's, Practitioners and students from all over the world, Michael Hanna and the International Academy of Feng Shui have built the most powerful Feng Shui software available. This software is used by hundreds of Feng Shui Master's. Practitioners, students and enthusiasts from **over 118** different countries throughout the world.

"A Danger Foreseen - Is A Danger That Can Be Avoided"

What do I do with last year's cures & enhancer's kit?

Most books or websites will advise you to throw away your old annual cures and enhancers or bury your old six-rod wind chimes; six Chinese coins tied with red ribbon, Pi Yao, wu lou, ba gua mirror etc from the previous year because they store so much negative energy. This is not always necessary as long as you cleanse the items before replacing for the new Chinese year.

To cleanse them ideally you should place outside under a full moon overnight or in direct sunlight for at least 4 hours and sprinkle with rock or normal salt. Rinse under water (don't forget to dry them) in the morning and place them in the appropriate areas. This does not apply to the salt water cure, as this **MUST** be **renewed** every year without exception. As with all our products including the annual cures kits, they are all cleansed of negative energy and empowered with positive Sheng Ch'i energy, which makes them so much more effective.

Many people write in asking if we personally change our cures and enhancers kit each year as nearly all websites and books say you should throw them away. Our circumstances are different to yours, we have thousands of these cures and enhancers in our warehouse but we have never changed our Wu Lou (19 years old) or Tsai Shen Yeh. We change our wind chime & Pi Yao every couple of years, the salt water cure we change without fail each year and I must admit the six Chinese coins tied in a row with red ribbon we always change and our Ba Gua mirror yearly as these are very bad to keep for too long and the reason why we will never sell plastic or metal Ba Gua mirrors as they do not age and store so much negative energy and will cause you many problems.

My advice is even if you have our kit from eleven years ago, carry on using it but follow the advice above about cleansing and make sure the salt water cure (must replace) and maybe six coins are replaced as these hold a lot of negative energy. Please **never** throw your Wu Lou away these are specially made for us and are the correct weight and size and I think they are a work of art and extremely powerful.

I cannot afford these cures or enhancers and/or my partner does not believe in Feng Shui?

Your home or office does not have to look like a Chinese restaurant to have good Feng Shui, if you do not want to have six Chinese coins tied in a row with red ribbon or a Wu Lou beside the bed there are alternatives. For the southwest and northeast of your home

or office use good quality heavy metal ornaments, a good shape is round as this represents metal but avoid menacing looking ornaments like metal knives or similar. I have some clients who hide cures like a set of six Chinese coins tied together with ribbon hidden behind a picture or similar and still get great results.

An alternative to a salt water cure in the southwest and northeast although nowhere near as powerful is a bowl of still ultra clean water with some flowers in, if you want. The water must be kept squeaky clean though otherwise it will cause you many problems. I am not that keen on recommending using a bowl because they can get dirty especially if you live in a hot country and can cause many problems, so please be careful if you do not use the salt cure.

In the east place some real quartz crystal or objects that are made from an earth material like ceramic, this will enhance wealth. The most important cure and crucial in 2010 is to place in the centre of your home or business place a square piece of slate measuring between 101 – 106mm in size along with one Chinese coin in the centre (try and make sure it comes from a good dynasty if you can) with eight pieces of quartz crystals, it will never be as powerful as the one we sell, as you cannot create the talismans needed in 2010 and ones we have had engraved onto the slate, although do not concern yourself with this. Take a look at our **annual cures kit** and be as imaginative as possible in creating your own kit.

If you look at all the information below you will find more alternatives for all the compass sectors without having to buy anything.

So what is flying star (Xuan Kong)?

Flying star (Xuan Kong) Feng Shui is the most powerful form that most professional Practitioners use; it has absolutely nothing to do with astrology. It is an analysis of the five elements, land formations and star combinations that occupy your building. Each Chinese New Year these annual stars change, bringing good and bad energy.

Every year and month we give free accurate information on how you can suppress or enhance the sectors of your home or office. Every building throughout the world will have these changing annual stars and you will need to take into account their ability to cause harm ranging from, sickness, wealth problems, legal problems, gossip, relationship problems and just overall bad luck and of course their ability to give auspicious good luck in wealth, health, romance, education and overall good well being. Unless a good star is activated it is of no benefit to you so follow our advice carefully.

“When you're thirsty it's too late to think about digging a well”

Sample of a Flying Star chart (natal chart)

Generated with our Professional Feng Shui software. This chart below does not just focus on annual and monthly stars but also your fixed stars that are hundreds of times more powerful.

2010 is the 4707th year of the Chinese calendar.

In China, the solar calendar of the Geng Yin (Yang metal Tiger) year starts on 4th February 2010. You can find a page on world times for the solar and lunar Chinese New Years to avoid any confusion, **World times Chinese New Year**

- The first day of the Hsia (solar) calendar is February 4th 2010, this is the day you would place your Feng Shui cures and enhancers.
- The Yang Metal Tiger year ends February 3rd 2011

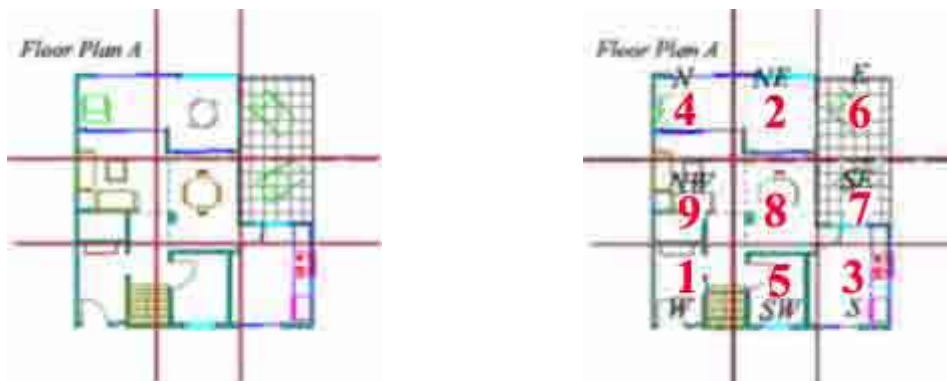
- 2011 is a Yin Metal Rabbit year (Xin Mao)
- Chinese New Year falls later this year on February 14th (also St Valentines day) 2010 (Lunar calendar). This is the date you celebrate the Chinese New Year with **Ang Pow**, fireworks **Talismans** etc and not the date you use to place cures and enhancers in Feng Shui. For more details on **2010 Chinese New year click here**.

HOW TO FIND THE 2010 COMPASS SECTORS WITHIN YOUR HOME OR OFFICE

Firstly, you need a floor plan of your home or office. This can be hand drawn but it should be more or less to scale but don't worry if it is not, it will give you a good idea either way. Define all the interior walls that indicate the different rooms. You can actually do your own floor plan within our Feng Shui software which makes it very easy.

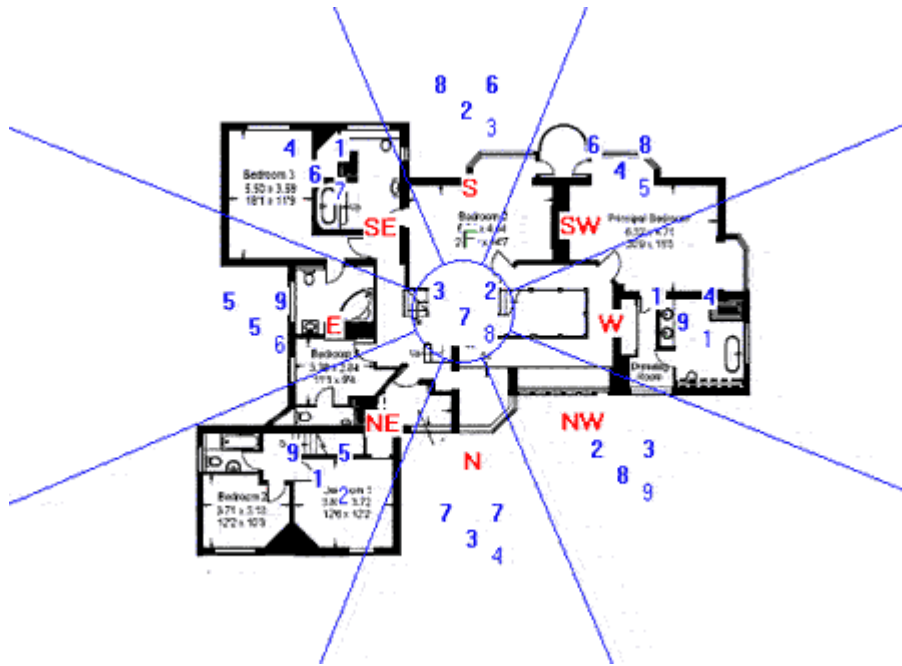
Secondly, you need to divide your floor plan into 9 grids or wedges in proportion as shown below. Next, you need to know the compass direction of your home or office. If you need help taking **compass readings please visit this page**.

Once you have your compass readings; you will know which wall is in which direction and you can then overlay the year's Lo Shu grid (annual stars) according to the eight magnetic directions. So in 2010 you will see from below that the #5 star falls into the southwest area for this home which is a bedroom and this will cause many problems if you do not place any cures.



The chart below is for a house facing 181 degrees south 2 (Wu) built in 1999. This chart below was created with our **Feng Shui software**. The top left number is called the mountain star and affects health and well being, the top right number is called the facing star which affects wealth, and the middle number is called the period number and comes from the year the home was built. The bottom right number is the 2010 flying star. At a glance you can see where all the annual stars are along with mountain and facing etc and the reason why the software has become the industry standard in Feng Shui. The chart below is actually a very special chart called a "combination of ten with sitting" and requires careful analysis.

This is why I do not want to know any personal details on a client that I consult for, as these numbers (along with land formations around the home) tell me everything about health, wealth, career and every part of their life.



“People may not remember what you did for them, or even what you said, but they will always remember how you made them feel”

The 2010 Annual Feng Shui Afflictions:

The Three Killings - is a direct translation from the Chinese ‘San Sha’. This yearly affliction is mainly in the north (322.5° to 37.5°). It is imperative that you do not undertake any form of noisy renovations or re-decorative work in the north part of your house or office between February 4th 2010 and February 3rd 2011. Nor should you disturb the ground by digging holes, building foundations or conduct any maintenance work with any noisy equipment in this area inside or outside your property or garden. Once disturbed, this affliction will bring about three types of misfortunes – financial loss, sickness and arguments. This is the worst out of all the annual afflictions and in our home and business we take this very seriously as in our 29 years experience with Feng Shui we have seen some pretty nasty events from this energy when disturbed. In fact in 2009 I have seen at least seven instances of business’s going into receivership within 1-4 months because this area was disturbed by renovation or extensions of existing building.

Apart from not disturbing its ground, there are two other rules you should follow regarding the Three Killings. Firstly, if you are moving your desk around this year, never sit with your back to this direction (north). Secondly, it is better to face (north) this direction, especially if this is one of your four favourable personal directions.

If your front door faces the southwest in 2010, place a pair of Fu Dogs just inside the house looking outwards as protective guardians for the year. You must also place a golden coloured Pi Yao in the southwest looking towards the northeast, this cure is so important in 2010.

If you have to carry out work or emergency repairs in the north place a six hollow metal rod wind chime between the building and where the work is being carried out and ideally you should contact a professional Feng Shui Practitioner to select an auspicious date to start the work or you can use our Tong Shu software.

Tai Sui (The Grand Duke of Jupiter) resides between 52.5° - 67.5° northeast. Do not take this affliction lightly. Do not disturb the ground of this area at all costs. Northeast facing properties with front doors to the northeast must be careful not to allow the doors to slam and do not renovate or dig in this part for 2010.

With the #2 star also visiting the northeast Gen palace in 2010 you have earth meeting

earth which is a neutral combination but can cause bad luck and health problems and needs very specific cures and of course when you combine all this destructive energy with the even more destructive Tai Su (Grand Duke) you need the best cure available in the NE in 2010. You need a special cure - These come standard with all our 2010 cures and enhancers kits.

Sui Po (The year breaker)

Sui Po year breaker occupies the division directly opposite Tai Sui Grand Duke, which for 2010 is southwest (232.5 – 247.5), this is along with the nasty #5 star which increases the problem. You should treat this area with the same respect as the other annual afflictions with no groundbreaking work, renovations or any noisy activities. If disturbed this area can and normally will cause immediate health problems especially for the elderly so please be very careful. If you have to carry out work or emergency repairs in the southwest place a six hollow metal rod wind chime between the building and where the work is being carried out and ideally you should contact a professional Practitioner to select an auspicious date to start the work.

The annual five yellow has flown to the southwest this year and because the southwest is associated with earth energy this is not good and the reason why so many cures are needed in 2010. It is highly recommended not to disturb its position here with noisy activities, renovations or maintenance work. Houses with gardens or driveways in the southwest of the property should avoid disturbing the ground with major digging or building work. When disturbed, the Five Yellow can bring disaster, sickness, lawsuit and major loss of wealth.

Please do not start worrying if your bedroom or office are located in the southwest, just start preparing to place your 2010 cures and enhancers kit to ensure a trouble free year, and of course make sure you sign up for our **free monthly newsletter** so you are kept up to date with the monthly flying stars giving you even more control of your destiny. To give you even better control use our advanced **Feng Shui software** as this gives advanced analysis of every home or office facing any direction in any part of the world, I know I keep recommending this software but there is really nothing like it in the world.

How far do we take the advice we give?

My main door falls in the northeast and we will be using our northwest door to enter and leave the home in 2010, it will be a little inconvenient for us but it really does make a big difference and this year we need as much wind on our back as we can gather. We will also be placing all the 2010 cures in the northeast to help dissipate the negative energy that is here for the year. Am I concerned about the NE this year? Not at all, having good Feng Shui is actually being aware of potential dangers and making allowances and placing cures, you can and will avoid many problems. Last year in 2009 we had the same problems and we sailed through with no problem at all.

If you are moving furniture around this year, especially your work desk, it is vital that you must never sit facing this 15° sector (northeast). If you confront Tai Sui, you will experience defeat; demotion, loss and any venture will be met with obstacles. Instead, sit with your back to the northeast and he will support you. Avoidance is the best cure.

The traditional Chinese method is to place a Pi Yao or dragon headed tortoise in the southwest sector of your home or office facing northeast to appease Tai Sui. Use a compass and take the reading from the middle of the home to place the Pi Yao accurately to face the 15° radius northeast.

If you have to carry out work or emergency repairs in the northeast place a six hollow metal rod wind chime between the building and where the work is being carried out and ideally you should contact a professional Feng Shui Practitioner to select an auspicious date to start the work.

How far do we take this no digging or no noisy equipment?

What if your garden is in the northeast, southwest or north? Does this mean no cutting the lawn or cutting back the trees with a noisy hedge trimmer in 2010? Of course you have to do these jobs and if you cannot avoid building work or digging, use the following rules to reduce any harm that may result. In 2008 we had to replace our large driveway that fell in the north, northwest and northeast and whilst some of these areas were affected 2008 was the best year to do the work and if we left it till 2010 it would have caused us any problems, we employed extra builders (6 in total) to ensure the work was done over 6 days as even the monthly stars can have an influence. With placing all the cures in 2008 and also placing a six rod wind chime in the NW we had no problems at all.

- Place a six-rod metal wind chime between your house and building work whilst the work is being done.
- Start trimming or mowing from a different corner of the garden. Let us say your garden is in the northeast of the property. You should remember to start your garden work from the west or east corner as this carries an auspicious energy in 2010.
- The simple thing to remember is **AVOID** doing heavy work here and no digging or breaking ground, I have seen too many times some nasty repercussions from disturbing these afflictions in a year.

2010 Annual Flying Stars:

The analysis of the annual flying stars can only be conducted from a general point of view offering indications as to the influences of the stars in the respective palaces for the year.

How each sector affects the wealth and health aspects of the residents depends greatly on the quality and combination of the 'facing' and 'sitting' stars of the property's natal chart. If you have had a consultation by **Michael** he will be able to advise you better for 2010 or if you have a copy of our Feng Shui software it will show you where all your wealth areas are.

Please make sure you read all the report below as you will need to make the most of 2010, it may appear that 2010 will not be a great year but believe me just following this advice can make 2010 a good year. The west is very auspicious and if you placed a lottery ticket in the west you will increase your chances. The lottery ticket below was created with an individual's own unique lottery numbers taken from their birth date and just by placing it in the west can increase the chances of a win tremendously.



Kan 1 White ☵ 坎 In 2010, Kan (Tang Lang) trigram is in the west.

Kan #1 is a water element. In the physical body it is the ear. Internal organ it is the kidneys and it is also blood. It also affects career and luck.

Kan water #1 (tan Lang) has flown into the west location for 2010 and the west is

considered a metal energy and from a five element aspect this is a nice association with metal feeding water. Although the inherent metal energy of the #7 red star is conflict and deceit and also causes problems relating to lungs and head, therefore cures are needed to protect and enhance finances and health. This can be very good for the youngest female especially with regards to romance/career and finances although they need to take care of health if they have a bedroom in the west and place cures regardless.

Whilst the energy is very good special cures and enhancers are needed in the west to enhance and protect your wealth and business, especially for the youngest female as the west is a Tui Trigram which can affect the lungs and head so caution and cures are needed for those who smoke or suffer with stress. Check outside the west of your home for any poison arrows pointing towards it, if there are hang a ba gua mirror outside pointing towards the offending object. Relationships and romance can also be very good in these areas once activated.

If you activate certain areas of the home it can bring in new opportunities, gains in financial investments, academic achievements and also romance and relationships as peach blossom is very good in 2010. The intensity of these characteristics will differ in varying degrees according to the influence of the visiting monthly stars.

If the west is a bedroom, office, study lounge or other important room you should place a wealth protection amulet Xing Yun Qiang which is ten extremely auspicious Chinese i-ching coins tied with red ribbon in a certain order and is so important in 2010. This is a very traditional and authentic enhancer for the #1 flying star that occupies the west palace in 2010. The 10 coins represent totality and because the west represents the metal element this is why you use the ten coins, the number ten represents wealth and good luck, combined with the #1 star so a perfect element enhancer in the cycles of the five phases. These coins represent fame, fortune, wealth and success. You use this powerful and much needed cure to weaken the undesirable influences of the monthly stars #2 and #5 which will visit in April and October 2010 and the reason why they should be placed. These powerful cures and enhancers are very important in 2010 and comes standard in all our **2010 cures and enhancers kit**.

Blues, black, grey or charcoal would be a good colour scheme for a room in the west in 2010. These colours can also be used in beddings, throw-overs, lampshades, pillow covers etc. If you have a bed located in this area, remember to place a brass wu-lou beside the bed. Avoid fire colours like red, pink, purple, orange, lilac etc in the west and also avoid candles at all costs.

Businesses' that deal with money like a bank or share dealers and even casinos or betting shops can expect better times if they have an office or main door in the west although they must hang a set of ten Chinese coins tied with red ribbon in the west to get the full benefit from this auspicious area in 2010.

Businesses' that rely on sales or related to industries selling properties or similar should be cautious this year and should make sure they place cures in the west and southwest part of the building especially so if they have a main door here.

Summary for year 2010:

The best months for the west are February, May, July, September and November.

Take extra care in the months of March, April, August, October and December and check back here to further analyse these months.

You can also place a moving (yang) water feature in the west in 2010 To get a better idea of whether to use water for wealth it is a good idea to construct a flying star chart of your home and then decide, or if you want the easy way look at our new **2010 Feng Shui software** as this not only calculates it also advises on placement for wealth, health, relationships and every other aspect.

Enhancement summary and advice.

- A brass Wu-Lou is advisable for a bedroom that falls into the west along with all shades of blue, black, grey or charcoal colours. This is especially so if you are not in good health and if you cannot buy a wu lou place a heavy round object close to your bed but avoid candles or colours red, pink, orange, purple or any fire colours.
- Place a wealth protection talisman in the form of ten auspicious i-ching Chinese coins tied with red ribbon in a certain order (Xing Yun Qang); this is so important in 2010 and if you cannot buy one, use ten loose Chinese coins in a row but do not attempt to tie red ribbon on them as they must be tied in a very special order to obtain the most influential power. Go to our **2010 cures kit** for details to see what they look like.
- Avoid candles or fire colours like red, pink, purple, orange or burgundy in the west in 2010, blues, blacks, grey or charcoal are good colours to use.
- Metal objects are good to place in the west in 2010.
- If the youngest female is weak and/or unhealthy be careful if extending or refurbishing the west of your home or office in 2010, it could cause them problems.
- Place creative enhancements like displaying an abacus, calligraphy set, artist tools like canvas, brushes etc.
- Naturally not as powerful but round metal shapes are an alternative to using Feng Shui items but avoid sharp or menacing looking metal objects.
- Make sure you remove all the metal cures like the salt cures and six coin in a row from the 2009 cures and enhancers kit from the west as this can cause many relationship problems if left.

Kun 2 Black 坤 In 2010, the Kun 2 Black (Ju Men) visits the northeast

The northeast in 2010 is not a nice area at all but with the placement of the cures and enhancers we can actually receive a little benefit from the #2 star. This is because the #2 earth star visits the #8 White Zuo Fu wealth star (northeast) which is associated with wealth and good fortune so the element relationship between these two earth stars is harmonious although the #2 is very inauspicious and must have cures placed otherwise it will cause many problems in 2010. If your bedroom, office, lounge, main door or other important room is located in the northeast and you are unable to move out please read this section carefully.

Try and keep the NE of your home as quiet as possible and avoid building work or renovations in 2010. If you think it is bad enough having the #2 star in the NE it is also marred with Tai Sui Grand Duke so be prepared and read on as it can seriously affect your wealth and overall luck...

If the northeast of your home or office is a bathroom, utility room, guest bedroom or other less important room do not panic this is great news for you, and for my home this is my main door and I know once I have placed my cures and enhancers it should not cause us any problems. Last year 2009 the NE was heavily afflicted and with our annual cures in place it caused no problems at all and we received so many testimonials from clients who said they had no problems either, this is not just using our annual cures kit it is also just following the basic advice in this report.

If your front door, bedroom, office, lounge or other well-used room is located in the northeast this will inevitably activate its malicious effects, so read on...

We have the #2 star visiting the northeast #8 palace and when we see 2 & 8 together the potential of bad luck is strong so please make sure you follow the advice in this report.

This star affects the health of those under its influence bringing with it wealth problems, sickness, disease, bad luck, stress, stomach and digestive problems, bloated feeling, gossip, back stabbing, family harmony and distress. This is especially so for people who are a Gua #1, 3 or 4. Check on this page if you do not know your Gua number [eightmansions.htm](#) or if you have our software you can calculate your Gua and best directions.

The 2 Black in Period 8 is an untimely star and hence its influence will be of a negative nature. You must place a salt water cure, Wu Lou and six Chinese coins tied with red ribbon, metal singing bowl and also place more round metal decorative objects (provided they are not menacing looking, round shape metal is good) to dissipate its negative influence in the northeast corner of your home or room. Avoid triangular or sharp shapes in this area.

A very powerful and commanding and much needed cure in 2010 is a wealth, protection & romance amulet (Shi Dong Wu), this is all the wealth enhancers you can think off in one powerful charm enhancer combined with wealth protection which is so important in 2010 especially for those with an important room in the northeast. Make sure there are no red items, bright lights or burning candles in this area. Do not worry if you have these colours already just introduce colours like white, silver, gold or copper in the way of a floor mat, cushions, throws, tablecloth or such like. If you have a main door that falls in northeast in 2010 you would be advised to hang a Ba Gua mirror outside to deflect the negative energy.

Ladies expecting should try and avoid using a bedroom if it is located in the NE. If there is no choice, try to use a good (west, north or east) sector of the room and implement the necessary cures. You should also sleep with your crown of your head in your personal Tien Yi direction. Males who spend a lot of time in the northeast should be careful of what they eat in 2010 and a good time to think about a lifestyle change.

If you cannot avoid using this room or this corner of the room, place a brass Wu-Lou beside your bed. The brass Wu-Lou (also known as a calabash) gives elemental support to the northeast and also symbolises good health and dissipates the negative energy of the #2 star. Because the northeast is associated with the youngest male, the home or business can be affected so make sure if he sleeps, works or spends a lot of time in the NE all cures are placed. Be very careful in February, April, May, July and November 2010 as the northeast is at its worst then.

More importantly, do not decorate the northeast room with red fire colours or triangle shapes items and most important avoid burning candles or leaving bright fiery coloured lights on for too long during the year.

The most important cures to place in 2010 in the northeast are the salt water cure and six Chinese coins tied with red ribbon and why they come standard in all our [2010 cures and enhancers kit](#).

Good news for those who are Gua 9 or 2 as this combination whilst on the whole is very bad it can be good for them in wealth and career, you will still need to place the recommended cures as detailed here but the effects of the #2 black will not be bad for you and can even give you positive results.

Please remember that **Tai Sui (The Grand Duke of Jupiter)** resides between 52.5° - 67.5° northeast in 2010. It is vital that you must never sit facing this 15° sector. If you confront him, you will experience defeat, demotion, loss and obstacles. Instead, sit with your back to this sector and he will support you.

Do not undertake any form of noisy renovations or re-decorative work in this part of your house or office between February 4th 2010 and February 3rd 2011. Nor should you disturb the ground by digging, building foundations or conduct any maintenance work with any noisy equipment in this area inside or outside your property or garden. Once disturbed, this affliction will bring about three types of misfortunes – financial loss, sickness and

arguments. This is the worst out of all the annual afflictions and in our home and business we take this very seriously as in our 29 years experience with Feng Shui we have seen some pretty nasty events from this energy when disturbed.

Summary for year 2010:

Do not activate this area with loud noises, keep quiet and avoid building work or refurbishment although it is not too bad. Do not use the fire element or colours red, pink or purple. Keep doors closed. Place a Wu Lou, salt water cure, gold Toad, wealth ingot and six coins here along with metal ornaments. Use colours white, silver, gold or copper.

Take extra care in the months of February, April, May, July and November.

Remedies

- Hang six Chinese coins tied in red ribbon.
- Place a salt water cure.
- You can use any metal ornament as long as it is not sharp or aggressive looking, and believe it or not a good cure is a round metal dog bowl or weight lifters weights.
- A brass wealth ingot is good for protecting wealth.
- Place a gold coloured three legged Toad with an i-ching coin underneath.
- Place a Wu Lou and/or other metal ornaments to dissipate the negative earth.
- A metal singing bowl is very good as is a stainless steel Dog bowl.
- Avoid using red colour in this room and refrain from displaying triangle shape or fiery pictures.
- Place a wealth, protection & romance amulet for 2010 (Shi Dong Wu)
- Avoid candles or bright lights at all costs. Check or upgrade smoke alarms and other fire prevention methods.
- Place a Ba Gua mirror in the northeast outside only and use a wealth protection Ba Gua mirror.
- Naturally not as powerful but round metal shapes are an alternative to using Feng Shui items but avoid sharp or menacing looking metal objects.

Chen 3 Jade 震 震 In 2010, the sound of Lu Chun #3 Jade can be heard in the south palace.

You must be aware of possible theft, arguments, disputes, hot tempers, loss of wealth and legal problems especially if you have a main door or important room in the south. Those of you with a middle daughter also need to take note but do not start worrying, with the cures and enhancers in place you will avoid many problems.

Try and keep the south of your home as quiet as possible and avoid building work or renovations in 2010.

To remedy its effects use red decorative objects, candles, lamps and lights. A nice simple cure is a red, pink, purple, burgundy (fire colour) floor mat or a table lamp with a red shade. Do not use metal (metal colour is OK) to control this energy for you will aggravate it, restricting the beneficial influence brought by auspicious monthly stars in certain months and magnify its negative influence.

Do not have a water feature inside here unless a professional Feng Shui Practitioner has advised you.

Some books or websites you may have read will tell you the #3 wood star can be a good star in period 8 (2004 – 2024), in our opinion it is still an unpredictable star and you should not try and activate it unless you are qualified to do so or you have used our Feng Shui software. It will become more usable towards the mid to later part of the 20-year period 8 cycle.

I have seen websites and books even recommending placing water here for the annual #3 star, do this and you could invite arguments, wealth problems, divorce and legal problems, without taking into account your land formations, period, mountain and water stars, please be very careful. I am not saying these people are wrong to recommend placing water; I am saying that you should take into account the bigger picture before using such a powerful enhancer like water on a known unbalanced star at this particular time in the twenty year cycle. I have used water many times on this star with good results but have also used water and got less desired results, it really depends on other occupying stars, land formations and also the gua Trigram of the occupants, please be very careful of this unpredictable flying star.

Ensure that documents signed during the year are checked through thoroughly before committing. The influence of a Chen 3 in Period 8 denotes possible arguments, disagreement, back stabbing and in extreme cases, this can result in lawsuits, either as a petitioner or a defendant and also causes loss of wealth. Either case there will be a loss of time, energy and wealth, so please be careful during 2010 especially if you have a main door in the south and if you can, try and use another door to enter and leave. You should also hang a Ba Gua mirror with a Chinese i-ching coin on the rear for added protection in 2010. The reason why it is very bad in 2010 is because when the #3 star flies into the south Li palace which is a fire element, wood and fire elements are in harmony which is good news but still be careful.

An imperative cure in 2010 to protect against legal issues, gossip and loss of wealth is called a Xiu Fo which is a fire Buddha sitting on a bed of Chinese i-ching coins protecting wealth and guarding against legal issues and back stabbing. This cure and enhancer is so important in 2010 as it is an effective cure for the #3 star and "bull fight sha". This cure is imperative to be placed in 2010 and it sits alongside a small piece of Jasper Red quartz (must only be this crystal when used with a fire Buddha) to further protect and enhance relationships, the quartz protects against physical and physic attack. This combination of flying stars can cause many arguments, legal problems and disputes and can lead to loss of wealth and because my home office is located in the south this is one cure I will be definitely be using upstairs and down just in case. It is a cure we have used for many years and would not do without. For this reason we have included this standard in all of our **2010 cures and enhancers kit**.

The Jasper red Quartz also negates the negative qualities of the #3 wood star bringing harmony and balance and acutely some positive energy can come from this. This cure is vital if you have a bedroom in the south or other important room like office, lounge etc. Those with a main door in the south should avoid any dangerous sports in 2010 as accidents that cause broken bones are likely.

To calm interactions:

- Place a light in the south if you have a choice, a lamp with a wooden stand and a peach/red shade is better.
- Do not hang wind chimes of any material in the south in 2010, especially metal wind chimes as it will worsen matters. If you have been advised by a professional Practitioner this is fine.
- During hot summer months, make sure the fan is not located in the south.
- Take extra security measures for the whole home or business during 2010 and check smoke alarms.

- Check through everything before signing documents if office is in the south.
- Try and keep this area quiet and do not disturb with loud noises.
- If you had our 2008 cures and enhancers kits place your red Kwan Yin statue here.
- Try not to let children or noisy animals play in the south.
- Beware of backstabbing, as sometimes it is unseen and behind your back and also from someone you thought you knew quite well.
- Invest in a good compass and avoid placing machines like a TV, fan, fax machine, computer or any machines that creates noise or vibration in the south of any room.
- Most important is not to disturb the ground inside or out.

Sun 4 Green ☰ 巽 Sun 4 Green Wen Qu romance and literacy star gracefully enters the north of the Lo Shu square in 2010.

The Sun wood 4 occupies the watery north palace in 2010 and this is a conditional star but is auspicious in Period 8 (2004–2024). It governs romance, career, travel, creative, academic and artistic talents, wisdom and intelligence as well as self-development. With the wood of the #4 star combined with the water energy of the #1 star this is a glowing relationship and we can expect a lovely energy from here as it creates a lovely peach blossom if activated correctly with the right enhancers.

If you want to enhance this wonderful star you must use a very special enhancer called a Yuan Xin Kang enhancer which is a very special talisman engraved onto a stone heart along with a scroll of all your wishes and a superb enhancer not just for romance but also for career, wealth and business.

This powerful enhancer is a very little known talisman and we had to have the hearts specially engraved with the talisman which was not easy at all but turned out perfect, the whole cure then needs to have a thought form charm placed inside and positively empowered with sheng chi energy (this is already applied to the one's that we sell). I really do love this cure and enhancer especially as it is a traditional and little known enhancer to only a few Feng Shui masters.

This cure and enhancer when used is also a manifestation enhancer so it is good to place an image close to the crystal heart that represents everything you want to achieve in life, an example to some would be a picture of a beautiful home that you desire, a man or female that you admire, a car like a Ferrari or Mini, the number of children you would like, I think you are getting the picture by now, just create a dream board with all that you desire pinned to it or draw the image or you can even download some images from www.google.com this really is a very powerful way of manifesting your dreams and it really does work, remember to place the image by the sheng chi enhancer and if you want a short cut to create it consider using our new Feng Shi Academy 3 software which incorporates this type of manifestation.

The heart should be cleansed of negative energy and empowered with positive Sheng Ch'i energy in moonlight or sun (this has already carried out to the ones that we sell) which is said to bring wealth, health and good luck. This cure and enhancer is so important in 2010 and why it comes standard in all our **2010 cures and enhancers kit**.

Whilst this star is very auspicious without cures this #4 star can bring both wanted and unwanted romantic opportunities to the household if the cures are not put in place. Having a door in the north with the cures can bring in new opportunities and lots of travel and a perfect cure for a company that deals with travel or printing.

Do not use fire or metal in this area or colours white, silver. Do not worry if you have these colours already just introduce colours blue or black in the way of a floor mat, cushions, tablecloth or such like.

As in every star, the 4 Green has a positive and negative aspect to its nature. Although a favourable annual star in 2010, it can also be affected by the presence of an unfavourable monthly star and when it does, it denotes betrayal, heartbreaks, scandals and humiliation in affairs of the heart. The affected months are February, April, June and July. So keep an eye on our monthly updates. Treat this area as your relationship and creativity area for 2010 it can be very good for you. If the North is an important area like a main door, lounge bedroom etc please keep it is clean and clutter free as possible, believe me it makes so much difference.

Couples with a bedroom in this location can also enjoy good relationships. There may also be a chance of producing intelligent children. If you want to enhance this further place a statue of Kwan Yin in the north or south part of your bedroom.

The #4 star governs relationships so a nice romance enhancer is a pair of Mandarin Ducks tied in a special way with red ribbon and formation of a lucky Chinese knot with all five element colours, these are supplied standard with our 2010 cures kit.

Another traditional way to enhance fertility is to display peanuts in shells (groundnuts) or any seed products like black or red melon seeds (Gua zi). In Mandarin, peanuts are called 'hua-sheng' and for the Chinese this word is onomatopoeic in that the sound of it means the birth of many children. You should display them anywhere in the bedroom and of course be careful if anyone in the home suffers with nut allergies.

You MUST NEVER disturb the north inside or out by lots of drilling or knocking activities as we have the three killing located here in 2010. So please be careful. You should also place a Ba Gua mirror especially if you have a main door here, I will be renewing mine in the north on February 4th without fail and this year I will use the wealth protector ba gua with the Chinese i-ching on the back.

Summary for year: With the above cures and enhancers in place you should reap the rewards from this area especially if you are looking to enhance relationships or creativity; this area is very good for writers, artists, students and anyone that is related to the travel, crystal, alternative, health industry.

Avoid fire element and colours red, pink or purple. Good colours are blue, grey or black. If you wish to enhance areas of creativity and academic achievements, place or hang moving objects to enhance the Ch'i of this sector, do not use wind chimes. Keep area semi active with windows occasionally open. Do not use metal items here especially wind chimes from the 2010 cures. Spend time in the north if you want to enhance romance, creativity or academic pursuits.

Cures and enhancers summary:

- Use blue in your décor if this is your office or bedroom.
- Make sure you remove all the metal cures like the salt cures and six coins in a row from the 2009 cures and enhancers kit from the north as this will cause many relationship problems if left.
- For office and studies, place a task light and a crystal globe on the work desks. Blue items can be added on the desk e.g. blue paper, blue books etc
- Avoid displaying metal objects here especially large heavy ornaments.
- Fresh flowers or small pots of green leafy or flowering plants can be displayed in this spot of the house to lift the qi. Blue or green flowers are a good choice.

- If you have mandarin Ducks this is a good area to have them and any other symbols of romance like hugging couples etc.
- Place photos of loved ones or images of love to enhance relationships or attract new love. This can be photos, paintings or statues, make sure there is always a pair in the image.
- For romance a Dragon headed Tortoise or Mandarin Ducks are very good

The 5 Yellow In 2010, the annual 5 Yellow Lian Zhen star of tragedy is located in the southwest palace.

The Southwest is the worst area in 2009 and you must be aware of possible theft, arguments, disputes, hot tempers, loss of wealth and legal problems especially if you have a main door or important room in the southwest. Females also need to take note but do not start worrying, with the cures and enhancers in place you will avoid many problems.

For those of you that know me you will know I like to try and give bad news as optimistically as I can and firmly believe the power of the mind is as powerful as Feng Shui and providing you give the correct software to the brain you can turn bad into good. We have proved that many years so please be positive, you can avoid many problems and read this information a few times over so you are prepared for 2010.

This year we have the evil #5 star visiting the southwest (Kun #2) where we see earth meeting earth and although the two elements are in harmony they are still destructive and needs cures otherwise it will cause bad luck and wealth losses.

The advice I have given over the last eleven years always comes from the heart and I try to make sure that those who do not use or cannot afford traditional Chinese cures like a **salt water cure** or six Chinese coins tied together with ribbon that there are always alternatives you can safely use. Use plenty of good quality metal in the southwest this year and make sure you cleanse all your cures from previous years. Good shapes are items made from metal that are round, even a stainless steel dog bowl is a good cure.

Do not to disturb its position here with noisy activities, renovations or maintenance work. Houses with gardens to this corner of the property should avoid disturbing the ground with major digging or building work in the southwest in 2010.

The 5 Yellow also called '*Wu Huang or Lian Zhen*' in Chinese, is one of the bad annual afflictions. It is an extremely unstable star. It has no gender and no trigram and is highly treacherous when disturbed. When disturbed, its malicious influence brings tragedy, sickness, lawsuits and major loss of wealth. Do be careful with it. Stillness together with metal cures can keep its negative influences at bay and you must avoid using fire energy like reds and candles in the southwest in 2010.

As we have so many negative afflictions in the southwest with the annual #5 yellow along with Sui Po you must place a salt water cure, six rod wind chime, Wu Lou and six Chinese coins tied with red ribbon and also place more metal decorative objects (provided they are not menacing looking, round shape metal is good) to dissipate its negative influence. Even a pendulum chiming clock in the southwest is very good and whilst this contradicts what I said about keeping the area quiet, the chiming sound of the clock is actually as important as the moving metal of the pendulum. In the old days they would have had someone striking a gong every 15 to 60 minutes. All these cures are essential and why we have included three of them as standard in all our **2010 cures and enhancers kit**. An alternative cure is place some very heavy good quality round metal objects in the southwest in 2010, I do not give this advice so you have to buy from us, most of these cures and enhancers I recommend you can put together yourself.

Another extremely imperative cure in 2010 and because the annual afflictions are so bad, is to place a gold coloured Pi Yao in the southwest facing towards the northeast. This cure is one of the most protective cures you can use and also a powerful enhancer but also for

protection against legal problems, arguments, disputes and loss of wealth. The Pi Yao is included standard in all our **2010 cures and enhancers kit**.

You MUST NEVER disturb the southwest inside or out with lots of drilling or knocking activities. So please be careful when you hang your metal six rod wind chime to control its influence in the southwest sector of your house. You should also place a Ba Gua mirror especially if you have a main door here.

You must **not** place red objects, bright lights, candles or red coloured furnishing in the north. Do not worry if you have these colours already just introduce colours white, silver, gold or copper in the way of a floor mat, cushions, throws, tablecloth or such like. You can also use dark blue or black if you prefer.

If your bathroom, cloakroom, en-suite, guest room or a large cupboard is located here, this is good for you this year, because these areas are not used much and therefore the negative power is not activated, I would still place the cures though regardless of what room is located in the southwest.

It helps if you can do a natal chart of all the other flying stars in your home as there is much more you can do to protect yourself, if you know how to do a flying star chart it is worth doing or maybe consider buying our specialist **Feng Shui 2010 software**, it is worth every penny and can save you from many disasters, you will not find any better than this software as it not just tells you where the problems are, it tells you how to correct them or enhance the good areas, it is the industry standard in Feng Shui and used by thousands from all over the world.

Summary: Do not activate the southwest with loud noises, keep area quiet and avoid at all costs building work or refurbishment. Do not use the fire element or colours red, pink or purple. Keep doors closed. Place a six-rod wind chime, Wu Lou, salt water cure and six coins here along with metal ornaments. Use colours white, silver, gold or copper. I will repeat this part, as it is so important, please keep the southwest of your home or office as quiet as possible, avoid redecoration and building work in 2010 in the southwest part of your home or office and when you hang your wind chime try not to make so much noise with hammers etc, don't worry about the noise the wind chime makes, this is all part of the cure, so when it is in place try and remember to knock it a few times a day.

Summary for year 2010:

Take extra care in the months of May, July, August and October.

Every year we put together a powerful cures and enhancers kit and this year it is even better and more powerful than ever and don't just take our word though; **click here** to read hundreds of testimonials that we have had over ten years from every corner of the world.

Please remember that **Sui Po** resides between 232.5° - 247.5° southwest in 2010. It is vital that you must not disturb this 15° sector in 2010.

To calm interactions:

- Avoid playing loud music in the southwest of the home or room.
- Do not decorate your room with red or earth colours this year. Grey, blue or white beddings and curtains are good colours to use temporarily.
- Place a salt water cure in the southwest of the building along with six Chinese coins tied in a row with red ribbon and six hollow metal rod wind chime.
- The six coins in row and salt cure are a crucial cure to place in 2010, please do not forget it.
- Place a Brass Wu-Lou in the southwest corner of the room if this is your bedroom.

- Metal objects such as six Chinese metal coins tied in a red ribbon and/or a brass Dragon can be placed in this corner too. Do not to use red dragons.
- Do not place red objects, burning candles or triangular shaped furnishing in this sector.
- Most of all, avoid disturbing the north at all costs. Any form of renovations that needs to be done, plan it for another year. It is worth keeping this in mind.
- A Pi Yao in a gold colour is very effective at not only reducing the bad earth but by also protecting your wealth for the year in the southwest.
- Replace or at the very least cleanse your Ba Gua mirror in the southwest especially if you have a door here.
- If you have a main door in the southwest make sure you oil the hinges and try not to let it bang shut and oil squeaky hinges.
- If you use a fan or other machines that creates noise or vibration try and avoid placing it in the southwest part of a room, get yourself a good compass.

Ch'ien 6 White ☰ 乾 The star of Heaven Chien 6 White (Wu Qu) sits in the east Jade #3 star palace in 2010.

6 White is a compassionate money star and as an annual star, its position in the east in 2010 is very good for career, wealth, politicians, leaders and anyone involved in the jewellery business, those with a main door, office/study in the east will benefit greatly.

This year this #6 star will bring more success for anyone with an office or main door in the east especially if activated correctly.

Those who have main doors or offices in the east sector will enjoy excellent business and career success. However, whilst 6 White represents accomplishment, if the #6 annual star is located in a bedroom it can cause problems with the throat and/or legs and also problems with breathing especially for an eldest son although they are minor problem and nothing to worry about if you follow the advice here. If you do have a bedroom in the east place some blue, black, grey or charcoal cloth such as a rug or duvet covers to dissipate its energy.

An important cure, enhancer and protector in the east in 2010 especially if you have a main door, bedroom, office or other important room is to place a Wu Lou Trinity talisman, one of the most effective and powerful cures in 2010 and we had these specially made for us and although a simple yet extremely powerful enhancer for the #6 star encouraging wealth and protection. In 2010 you should hang these in the east. They are known as the "Giver of life" it can also be placed beside the bed of someone who is ill or recovering, they are traditionally used to improve health and good luck. This is a very traditional enhancer for the #6 star that occupies the east in 2010 as we have metal and wood meet and the eight peanuts are symbolic of good health and fertility and also career advancement. These wu lous and peanuts also represent fame, fortune, wealth and success. They can also be used as Wealth enhancers and be placed over your main entrance.

You will also need a sheng chi cure which is an extremely powerful cure and enhancer in 2010 and one that can only be used in certain years and used to enhance romance, relationships, academics and creativity. This powerful enhancer is a very little known talisman charm and the reason it is called "Sheng Chi" is because it creates a cycle of life with the annual auspicious #6 metal star destroying the #3 wood star of the east and this must have a cure and at the same an enhancer otherwise it can cause many problems. This essential cure is made up of a strong earth element palm stone made from agate crystal with an auspicious Chinese i-ching coin placed on top along side a piece of Turquinite quartz crystal which is said to protect and enhance mind and mood and a stunning piece of *Rhyolite* Jasper which is cleansing and healing and protector of physis attacks. These three crystals along with the Chinese i-ching coin make this a powerful cure and enhancer in 2010. I really do love this cure and enhancer. These crystal's have been

cleansed of negative energy and empowered with positive Sheng Ch'i energy, which is said to bring wealth, health and good luck. This cure is also a good crystal to energise and clear negative energy in a room

Another cure and enhancer to place in 2010 is a Jade wealth charm which is supplied in our deluxe **2010 cures and enhancers kit**.

Summary for year 2010:

Take extra care in the months of June, August and September.

On the whole this is a nice area and even better if your main door or office is located here, keep area active with windows and doors open. Good colours are earth colours yellow. Place some real quartz crystal here or the hanging faceted sphere type; these are very good for activating the wealth and business side of this nice star.

Enhancers and cures if needed:

- If this is your bedroom, a shade of blue or black in your furnishing or décor may help with health. A blue painting (not water scene) may also do.
- Place a Wu Lou Trinity talisman (Gua Hu Fu) in the east in 2010; these are very traditional and powerful cures.
- Real quartz crystal is very good in the east for 2010 as are faceted crystal spheres.
- Avoid colours red and candles in the east in 2010

Tui 7 Red ☰ ☶ The Lofty Wind of Tui (Po Jun) flies into the southeast in 2010.

The mischievous Po Jun #7 argumentative red star is a negative influence in Period 8. The trigram Tui is also known as '*Broken Soldier*'. This is a fighting star which can cause problems if left alone especially as it has flown into the southeast which is a wood area and this puts metal and wood in conflict and when combined their conflict negative nature denotes assault, deceit, violence and robbery. This area is not good for writers, artist or children studying and especially so for females although cures can be placed to dissipate the negative influence so do not worry.

The #7 Red indicates a high risk of burglary, deception, copyright theft, gossip and back stabbing especially in the months of May and September.

If you have a door that is used often in the southeast or even a window you should be looking to update security, smoke alarms and checking electrics. Please take this advice **seriously** as I have been doing this a long time and I know when this combination meets it can cause many problems.

In 2002 we had a similar combination in my home and where it was I had an old large aluminium sliding patio doors. The only door/window in the house that had not been replaced so I thought this was vulnerable for a break-in and whilst I never think negatively I am of course realistic, anyway we spent a few thousand pounds replacing the doors and improved security. It turned out the house was fine but in the same area outside I parked my car and this was broken into and around £1000.00 worth of sat nav, cameras, wallet etc were stolen, talk about "not seeing the wood for the trees, all I thought of was protecting my family so actually great news and superb Feng Shui that it was only the car. So please take my advice and have a good look at the security in the southeast of your home checking windows, doors, sheds and of course make sure you lock your car, ahem.

A vital cure and much needed cure in 2010 is a protection Buddha (also known as Fo Xiu) and associated with wealth, business, career, love and overall protection. You cannot just use any Buddha in 2010 it has to be a Buddha sitting on his possessions displaying a wu lou and the reason why we had these specially made in China. This Buddha is said to be one of the most powerful enhancers and protectors for wealth generation and wealth

protection especially when related to legal problems, theft and fraud. You should not use a red coloured Buddha in the southeast in 2010 and the reason why we had these made in a water element colour to help dissipate the negative energy of the #7 star making it a perfect cure and enhancer in 2010. Most homes in Asia will have them at the front of their home or business facing out thus giving absolute support in wealth and health. For business they are placed on the office desk giving you total power. In 2010 you need to place him in the southeast of your home or office to enhance and protect wealth. They are also a superb cure to protect wealth in the months when the #9 flying star enters the southeast in March and December.

You should also hang a Ba Gua mirror with a Chinese i-ching coin on the back for added protection in 2010 in the southeast especially if you have a main door here.

Sorry to harp on but please take extra security measures especially if you have a front, back or side door in the southeast sector. Make sure doors and windows are fastened securely before leaving the house. Do not display valuable items on windowsills, which may attract the interests of passers-by.

It pays to be wise and avoid taking too many risks for there may be unscrupulous people working against you. There are indications of misunderstandings, pressure and business rivalries that could also lead to losses.

Summary: Keep the southeast quiet and doors and windows kept closed. Good colours are blue or black. Avoid earth and fire colours and quartz crystals.

Summary for year:

If you have an office or door in the southeast be careful of people trying to deceive you, robbery, arguments and loss of wealth, always look at the very small print and be careful as this star normally causes problems with people you know and thought you could trust.

Remedy:

- You should also use more blue, grey, black or charcoal colours in your decoration. You can introduce the colour with cushions, rugs, bed covers or doormats.
- Do not use anything of fire element or colours red to control it as this may aggravate it.
- Avoid candles in the southeast at all costs.
- Install or service/upgrade smoke alarms and security systems.
- Do not hang metal wind chimes here.

Ken 8 White ☰ 艮 Zuo Fu This is the most auspicious governing flying star for the next fourteen years of the lower era of the sexagenarian cycle of the flying stars (Xuan Kong) system and is located in the centre in 2010, because we are in period 8 though this means the #8 star is imprisoned as the centre palace has no gender or Trigram and this is why my prediction of a year of very slow economic growth in 2010 and possible high inflation. So be prepared although the second half of the year should be much better. In 2008 we predicted the recession with 100% accuracy and we can say that many of those who followed our advice and used our cures and enhancers kit came out fine in the end so it is not all doom and gloom and in fact following this advice can create a good 2010, we in fact had our best year ever in 2009 whilst most companies suffered hard so be positive and read carefully.

Most Feng Shui websites and books will say that this will cause severe problems with the #8 star trapped but in my opinion we can make this very auspicious with certain powerful and little known cures and talismans that I will talk about shortly.

Wealth, fame, Romance, prestige and distinction can be expected especially if you have an office here, even if you do not we can still activate it. When activated correctly it brings good fortune and exciting times even with the conflict of elements. Placing the **cui hua ji** Master cure in the centre of your home or office actually remedies this area and in fact releases all its positive attributes.

If you work with symbols, quartz crystals, crystal balls or hanging faceted crystals are very good for the centre palace this year. The #8 star also governs relationships so a nice romance enhancer is a pair of Mandarin Ducks.

Whilst wealth is forecasted in 2010 for the southeast, beware of overworking as this can cause you health problems. The additional work will bring a good income but be careful of your health; in particular stress related resulting in high blood pressure or kidney problems.

The most powerful and important cure and enhancer in 2010 is called a Cui Hua Ji Master cure and can only to be used in certain years and whilst extremely powerful in 2010 the only other time it can be used again inside a building is in 2019 (Ji Hai) although after 2010 they are perfect to place outside in the northeast or southwest for protection. This cure is only known to a few specialist Feng Shui Masters and in the old days and even now in Asia you would employ a specialist Feng Shui Master to call at your home or business and the Master would spend hours carving the secret inscriptions onto an earth plate made from the finest slate or marble, this would then be placed in the centre of your home and then setting the eight special quartz crystals and would normally cost tens of thousands of pounds and obviously only available to the very rich which is still the case in many parts of the world and the reason why we create these powerful cures so all can afford them at a fraction of the cost.

With this Master cure we have not disclosed all the inscriptions, formula or even which crystals we use as in the eleven years we have been creating these powerful cures and enhancer's websites throughout the world copy our work and not only use the wrong formula but also use inferior cures/talismans and this will cause many problems. To give you an idea of the types of quartz crystal we use they range from Unakite, Rhodonite, Obsidian to Howlite. With further thought I feel that because this is such an important cure and enhancer in 2010 and whilst we sell it at a fraction of its value I know there are still many who cannot afford this (either way you will probably be hard pushed to save much money doing it yourself compared to the price we sell it at) so I have decided to publish further details on this cure and will post it onto our **Feng Shui blog** well before the Chinese New Year in February so please keep an eye on the blog and our **Facebook page** for further details and photos. Of course you can still buy it here separately or it is included in all our 2010 cures and enhancers kits.

Each of the eight rare and valuable semi-precious quartz crystals are used to work in synergy with the inherent element of the Luo Shu Trigrams giving total protection for wealth, health & peace of mind and releasing the #8 star from the centre to permeate the whole building. We only use the finest quality authentic quartz crystals and they have to be placed exactly as shown in the enclosed instructions with an auspicious dynasty Chinese I-ching coin placed in the centre of the earth plate lo shu grid which must measure between 101 & 106mm and were custom made by us and engraved with the special and little know talismans and made from 500 million year old Snowdonia slate which is the finest quality earth element you will ever find, This earth plate must face a certain compass direction (the instructions show you how to set this cure up) even if you do not own a compass for northern and southern hemispheres so it does not matter where in the world you live. This is one of the most powerful and commanding cure and enhancer for wealth, health, relationships and protection in 2010 and because this cure is essential for wealth and protection in 2010 we decided to include it standard in all our **2010 cures and enhancers kit**.

Do not place heavy metal in the centre of your home or office this year, as it will weaken the good earth.

Once you activate with the earth plate cure this is a very strong wealth, success and

romance area for 2010 so try and store your important financial papers here like pensions, stock portfolio etc in the centre. If you use symbolic cures this is where you should place your three-legged Toad facing your Sheng Chi direction for wealth or a pair of Mandarin Ducks for romance.

Summary for year.

Take extra care with health in the months of August, October and November.

To enhance:

- Hang a faceted crystal sphere in the centre of the house. Hang it above head height and twist now and again.
- The energies of the annual 8 can be activated by human activities. Use this room as frequently as possible unless you have received professional advice against it.
- A red three-legged toad can be placed here. Make sure the toad is facing into the house and not towards the door and the coin is never taken out of his mouth.
- Introduce some fire colours into the centre to balance the energies, a quick and easy way is using bed covers, rugs, table covers, sofa throws etc.
- If your bedroom is here, you can also place an amethyst or any crystal items in the centre of the bedroom to further strengthen the earth element of the benevolent 8.
- This is also a good study area for children. Place a task light and a crystal globe on the desk to enhance concentration.
- A romance enhancer is a pair of Mandarin Ducks in the centre this year.
- Keep area active with open windows and doors (yang energy).
- Keep the area outside and inside the centre, west, north and east as clear clutter free and open as possible, you need to let the auspicious Qi collect here and distribute inside and outside, when this happens it is know as Ming Tang 明堂, this is a collection of Sheng Chi (auspicious energy)

Li 9 Purple 離 (You Bi) Li 9 Purple is found in the northwest 東南 palace in 2010 and this can cause a mix of good and bad and why the year may seem unsettled although if you place all the cures and enhancers it will not be that bad.

9 Purple is the star of future wealth and has an auspicious influence in Period 8. Career opportunities and promotions are probable especially if you have an office or main door in the northwest in 2010. There is fame and acknowledgement, growth and improvement.

This is a good area in general especially for those in studies. If this is a family area (living, dining or a library), encourage children to study here.

Couples with a bedroom in this location can also enjoy good relationships. There may also be a chance of producing intelligent children. If you want to enhance this further place a statue of Kwan Yin in the northwest part of your bedroom, these are supplied standard with our deluxe 2010 cures and enhancers kit as they are much needed in 2010.

A very important cure and enhancer in 2010 is placing a nine Gold ingot charm - (Jiu chao) This is a little known Feng Shui cure and enhancer not only for the #9 flying star but also when the #9 star enters the NW Chien palace causing problems with the eldest Male (Patriarch) in the home and also problems with luck, wealth, love and relationships. Gold Ingots are called (Yuen Bao) in China. High officials in ancient China used them as a currency. Gold Ingots today are regarded as the symbol of wealth and fortune. The 9 star

is actually a good star but when it enters a Chien metal palace the metal of the #6 destroys this area and this is why you have these problems.

This essential cure is giving ultimate protection and enhancement of wealth and protection for eldest males making this the perfect enhancer and also protector of wealth, business and relationships in 2009. This is such a nice traditional cure and enhancer. This is a very important protector for the eldest male in the home. Made from a resin and painted gold colour to form nine tiered wealth ingots tied with red ribbon with double good luck tassels and an auspicious lucky knot at the top. As they are such an important cure and enhancer in 2010 we have included them standard in all our **2010 cures and enhancers kit**.

Although deemed as an auspicious star, the element of the annual #9 star in the northwest can strengthen the malevolent effects of visiting monthly stars #2 and #5. Hang a set of six Chinese i-ching coins on the wall here to weaken the undesirable influences of the monthly stars #2 and #5 which will visit in March, September and December.

Summary for year:

Be aware of the negative influences during the March, September and December and check the monthly flying stars.

To enhance:

- Healthy green leafy plants or blue flowering plants such as violets are good for this area.
- Fresh flowers displayed here will bring positive qi too.
- Symbolic objects such as a wu lou or six Chinese coins can be placed here all year round to enhance benevolent influence and at the same time dissipate the malevolent influence by the visiting monthly #2 and #5.

Spend as much time as you can reading this report, save it and print it to read at your leisure as it can save you from a lot of problems. You don't have to buy any cures and enhancers and I hope you agree I have always given you alternatives to the traditional cures and enhancers but if you do decide to buy a cures and enhancers kit you should read what some of our clients say about annual cures kits, not only do they offer you protection they enhance the beneficial areas, click on the banner below to read some of the thousands we received over the years.



Water placement in 2010:

As we entered period 8 (4th February 2004) the use of water outside is critical up until 2024, so a pond outside in the correct area can really work in your favour. You must not unless advised by professional Feng Shui Practitioner place water outside in the north-east up until 2024.

Outside water in 2010: Can be placed in the south-west or east, this is your primary and secondary wealth areas for the next sixteen years. In 2010 water outside in the southwest is very good but it would not be advisable to install a water feature this year though as the annual flying star is inauspicious although if you know what your natal chart (flying star chart) is and you also have a good facing star this would make a very powerful combination for wealth. If you do not know what your natal chart is or do not know how to create one take a look at our Feng Shui software as it does all the work for you, **follow this link**. Because the southwest is afflicted in 2010 I would not advise digging or disturbing the SW in 2010 but if you want to place a mobile water feature in the SW this is

fine although still check with your Practitioner or use our software.

Indoor water for 2010: You can use a moving water feature or aquarium in the northwest or west in 2010. Do not use water in any other compass sectors unless you have had a professional Feng Shui consultation or use our **Feng Shui software**.

If you are using water you must make sure the water is clean and flowing and never allow it to become stagnant. Water is a very powerful enhancer and is the essence of Feng Shui (Shui meaning water) the Ch'i is caught by the water and cleansed (providing the water is clean) and distributed throughout your property. If you look on our **resource pages** you will find more detailed information on water placement for 2010 and beyond.

Whilst the methods above are considered safe, there are many exceptions to the placement of water and as Master Practitioners and **teachers** we use many more methods of water placement for wealth, education and relationship, these methods whilst extremely powerful can only be used with expert guidance and a full analysis of your property and land formations, please visit **this link** for more details of an on-line consultation or home/business visit. Or consider our powerful **Feng Shui 2010 software**.

Salt water cure after 4 weeks.



Every year we receive thousands of e-mails saying how the **salt water cure** changed the energy in their home for the better; this is a very powerful and little known cure and one that we have been using for over twenty years. You should use the salt water cure this year February 4th 2010 in the southwest & northeast (**DO NOT REUSE LAST YEARS SALT WATER CURES IF IT IS MORE THAN TWO MONTHS OLD**).

There are many exceptions to be made, the thing to remember with flying stars is, if you have a 5 yellow in a dining room and if it is an open plan home the 5 yellow's power can drift into any other part of the home, think of perfume, if you sprayed some in your bedroom your partner may still be able to smell it downstairs because the smell goes into the air (Ch'i) and drifts around the home, so as general advice it is better to cure than leave to chance.

How to dispose of your old salt water cure?

You should change your salt water cure every year, why? Because they store an enormous amount of negative energy and moving it causes problems in all parts of a building. The best way is to get a Tupperware type container (margarine tub etc) and place the entire contents salt, water, glass and coins into it, close and seal the lid and throw straight into an outside bin. If you do not have a container pour the water down an outside drain (one at the back of house that leads away from the building) and place the salt/glass and coins into a plastic bag and place in bin. Please do not try and recycle, it is not worth it, this is the main reason we sell ours so cheap to make sure people can easily and cheaply renew them. Last year I saw a few websites selling these for 4-5 times as much as us. As with all our products they are cleansed of all negative energy and empowered with positive energy and the coins also come from a good dynasty making them even more effective.

If you want to be kept up to date with the monthly flying stars click on the link towards the top of the page to join our free monthly newsletter, it is read by over 85.000 Masters, Practitioners and fellow enthusiasts from all over the world.



Visit the pages below for further details on 2010 Chinese New Year etc.

Chinese New Year 2010 ** How to make your own Ang Pow ** Chinese Talismans for 2010 ** Chinese animal predictions for 2010 ** Flying star Xuan Kong 2010 ** Salt Water cure information** Avoid the fury of the Grand Duke, three killing 2010** Chinese New Year world time converter 2010** 2010 Cures and enhancers kits ** How to take a compass reading ** How to determine your facing direction ** Feng Shui software ** Feng Shui resource ** 2010 Tong Shu Almanac Software ** Feng Shui Blog ** Chinese culture **

Are you really prepared for 2010?



© Michael Hanna - Feng Shui Store 2010

The below copyright information does not apply to anyone who wants to copy our content or send to a friend or even store on your computer for their own personal use and development. Please feel free to copy and paste or share with as many people you like. The below is intended for the people who steal our content and claim it to be their own work.

We are more than happy to share our content; all you need to do is give us credit for our hard work and a link back to our website. Contact michael@fengshuiweb.co.uk for more details.