

Feng Shui Store  
2 Douglas Road  
Aylesbury  
Buckinghamshire  
HP20 1HW  
Great Britain  
Tel: (0044) 01296 399100  
Fax: (0044) 01296 582889  
[www.fengshuiweb.co.uk](http://www.fengshuiweb.co.uk)

FENG SHUI  
STORE

***Please feel free to save this page, email, print and share with your family and friends.***



## 2009 Flying Stars Analysis

© Written by Michael Hanna 2009



***"One of life's mysteries is how a 2 pound box of chocolates can make a person gain 5 pounds"***

On February 4th 2009 we enter a new Chinese year (year 4706<sup>th</sup> in the Chinese calendar), the year of the Yin earth Ox (Cow) (Ji Chou). The last time we had a Ji Chou (Yin Earth Ox) year was back in 1949 and this is known as a cycle of 60 which will be found in a traditional "ten thousand year calendar or our **Tong Shu software**). The 2009 Xuan Kong annual flying stars full analysis is detailed below. Please do not get confused with solar (place Feng Shui cures – spring begins) and lunar (celebrate Chinese New Year) calendars, more on this below.

The Internet can be a confusing place sometimes and you may have come across a few websites stating that 2009 is the 4707<sup>th</sup> Chinese New Year, if you cannot find the reason, here is an answer for you:

The Yellow King's appointment was held in the spring of 2697 B.C. But they used the winter solstice day as the first day of the year. So the first winter solstice was on around December 23rd, 2698 B.C. Today's January 1st means nothing to the Yellow King. If we count that extra eight days in 2698 B.C. for a year, then year 2009 is the 4706<sup>th</sup> Chinese year.

### **2009 Cures and Enhancers are needed more than ever. Are you really prepared?**

Every Chinese New Year we put together a valuable and essential Feng Shui cures and enhancer's kit of little known Feng Shui cures that can be placed at any time of the year. In 2009 we will need even more powerful cures and enhancers than any other year for a long time. Many of these cures we are using in 2009 are very tightly held secrets and although many websites have tried to copy them from us, they have not quite got the ingredients right. This kit is not just some gimmicky cures put together; they are extremely powerful cures that Feng Shui Masters and Practitioners throughout the world

use. It does not matter how late in the year you place your cures kit, we have many clients who have even placed them towards the end of the year and still got great results.

**If you want to avoid** continuing wealth problems, sickness, arguments, bankruptcy, legal problems, loss of wealth, relationship problems, problems with the mouth, sore throat, chest problems, skin problems, car accidents, accidents involving metal and water and just overall bad luck or if you want to enhance the positive areas in 2009 **read on...**



**If you would like more details on the 2009 cures & enhancers kit please click here.**

### **Are you prepared for 2009?**

In 2009 we have the #9 *purple Star* (You Bi) visit the centre earth palace and like last year whilst #9 star is an auspicious star on its own it can cause disasters relating to water and fire like earthquakes, volcano's, landslides and floods. The predictions we made for 2008 were as usual 100% accurate and fortunately thousands of our clients have survived the collapse of the world markets in the later half of 2008 because of our advice on world markets, finance or property.

Sadly we will continue to see world markets fall in 2009 although there will be recovery towards the end of the year, we still have further to go and values in property, fuels, stocks and shares and most commodities will fall to a lower level where they should have been before, which in my humble opinion is good for our children and grandchildren but enough politics from me. 2009 may be a year of hardship but you can really avoid many problems by following the advice on these pages. We have been making these predictions along with cures and enhancers for 10 years and the accuracy and power is staggering.

Please take care with investments in 2009 and be frugal and of course make sure you place your 2009 annual cures and enhancers as this will help lessen the effects and turn a potentially bad year into a good one.

I shall now take my grim reaper head off and get more positive, whilst many Feng Shui websites are predicting complete doom and gloom in 2009, I think much good will come from all this and it can be very good for relationships (love and family) in 2009, this is especially so if you activate your south and southeast sectors of your home. There are some good aspects of 2009 and if you follow the advice below you **CAN AVOID** many problems and this is the reason why we introduced our annual **cures and enhancers kits** back in 1999 so you can avoid many of the problems above.

Those born in the year of the Sheep may be affected by the conflicting influences of the year of the Yin earth Ox (Ji Chou) 2009.

The degree of influence varies from one person to another. One of the major considerations is the heavenly stem of the year in which one was born, so those who were born in 1943 & 2003 (water Sheep) will have a rougher ride than those born in 1931 & 1991 (metal Sheep). Sheep also born in earth and fire years, 2009 will be better. For more information on your personal **Chinese Animal predictions for 2009** [click here](#).

The forecast for the Sheep may be inauspicious but please remember this is only one small influence in the big scheme of things in life. Things can turn out well despite this, if you turn your attention to the annual and monthly flying star forecast on the energies of the space you occupy in your home and office in order to reduce predicaments. Combine this with **flying star software** and date selection software you increase your chances of a good year even more.

I have had thousands of clients over the years and each home and person I see will be different, as an example in 2009 if you have a bedroom in the north or west this can cause problems with the finances, bad luck, relationships, chest, stomach and also depression and if you were a person that smoked heavily it would without doubt cause you many chest related problems, however, if in 2009 you cut back or better still stopped smoking the risk is reduced and if you combine this with placing our annual cures and enhancers the risk is even less. There is no standard Feng Shui, one man's food is another man's poison.

#### **Surely our 2009 cures and enhancers will make me exempt from any problems?**

If your bedroom was in the north or west and you were overweight, smoked, ate junk food daily, drank heavily and a bit of a couch potato and thought that taking a vitamin C tablet at the end of the day will rejuvenate your body and mind, you are very much mistaken. As hard as this may sound, you will, I guarantee have problems in 2009 but if you make changes this year you will avoid many of those problems, placing just the cures and enhancers on their own will help tremendously but you also should make lifestyle changes as well and I think the good that will come from 2009 will be that we will appreciate more of what we have and to me this is real wealth. Please do not think I am standing on my high horse being all righteous and perfect, far from it, I am just giving you this advice as I have worked with thousands of clients throughout the world and I know the outcome.

With all that said please do not start panicking if your bedroom, living room, main door or office are located in the northeast, west and north, just start preparing to place your **2009 cures and enhancers kit** to ensure a trouble free year in 2009, and of course make sure you sign up for our **free Feng Shui monthly newsletter** so you are kept up to date with the monthly flying stars giving you even more control of your destiny.

I have my principal bedroom in the west and it will NOT cause me any problems at all so please take the same attitude and all will be well. I will be placing every single cure and enhancer that I talk about on these pages but I will also make some more lifestyle changes. I am fifty years old, if I am not in my car; I am on a train or a plane or sat at my desk. With my travels all over the world I eat in a lot of hotels and restaurants and whilst they are always good quality it is still not the right food for me. I do meditate nearly every day; I do take long walks twice a week and do qi gong nearly every day, however, my remit for 2009, is to place all the annual cures and enhancers, eat better and healthier and take more exercise.

As you may know we have given this advice on-line to hundreds of thousands of Feng Shui Masters, Practitioners, students and enthusiast for 10 years now and although we make suggestions on cures and enhancers we do not always agree with many websites insisting that you have to spend hundreds of pounds each year on cures and enhancers, they are simply not needed.

There are two products I do strongly recommend, which are, our **annual cures kit** and the world's most powerful and most widely used **Feng Shui software**, with over four years in development, 45 combined years Feng Shui experience and one year of beta testing with Feng Shui Master's, Practitioners and students from all over the world, Michael Hanna and the International Academy of Feng Shui have built the most powerful Feng Shui software available. This software is used by hundreds of Feng Shui Master's. Practitioners, students and enthusiasts from **over 118** different countries throughout the world.

**"A Danger Foreseen - Is A Danger That Can Be Avoided"**

### **What do I do with last year's cures & enhancers kit?**

Many books or websites will tell you to throw away your old annual cures and enhancers or bury your old six-rod wind chimes; six Chinese coins tied with red ribbon, Pi Yao, wu lou, ba gua mirror etc from the previous year because they store so much negative energy. This is not always necessary as long as you cleanse the items before replacing for the new Chinese year.

To cleanse them ideally you should place outside under a full moon overnight or in direct sunlight for at least 4 hours and sprinkle with rock or normal salt. Rinse under water (don't forget to dry them) in the morning and place them in the appropriate areas. This does not apply to the salt water cure, as this **MUST** be **renewed** every year without exception. As with all our products including the annual cures kits, they are all cleansed of negative energy and empowered with positive Sheng Ch'i energy, which makes them so much more effective.

Many people write in asking if we personally change our cures and enhancers kit each year as nearly all websites and books say you should throw them away. Our circumstances are different to yours, we have thousands of these cures and enhancers in our warehouse but we have never changed our Wu Lou (18 years old) or Tsai Shen Yeh. We change our wind chime & Pi Yao every couple of years, the salt water cure we change without fail each year and I must admit the six Chinese coins tied in a row with red ribbon we always change and our Ba Gua mirror yearly as these are very bad to keep for too long and the reason why we would never sell plastic or metal Ba Gua mirrors as they do not age and store so much negative energy.

My advice is even if you have our kit from ten years ago, carry on using it but follow the advice above about cleansing and make sure the salt water cure (must replace) and maybe six coins are replaced as these hold a lot of negative energy. Please **never** throw your Wu Lou away these are specially made for us and are the correct weight and size and I think they are a work of art and extremely powerful.

### **I cannot afford these cures or enhancers and/or my partner does not believe in Feng Shui?**

Your home or office does not have to look like a Chinese restaurant to have good Feng Shui, if you do not want to have six Chinese coins tied in a row with red ribbon or a Wu Lou beside the bed there are alternatives. For the west and north of your home or office use good quality heavy metal ornaments, a good shape is round as this represents metal but avoid menacing looking ornaments like metal knives or similar. I have some clients who hide cures like a set of six Chinese coins tied together with ribbon hidden behind a picture or similar and still get great results.

An alternative to a salt water cure although nowhere near as powerful is a bowl of still ultra clean water with some flowers in if you want. The water must be kept squeaky clean though otherwise it will cause you many problems. I am not that keen on recommending using a bowl, as if they get dirty especially if you live in a hot country they can cause you many problems so please be careful if you do not use the salt cure.

In the southeast place some real quartz crystal or objects that are made from an earth material like ceramic, this will enhance wealth. In the south place four Chinese coins (try and make sure they come from a good dynasty if you can) with four pieces of smoky quartz and a piece of sodalite crystal. In the NE you should ideal place a master cure (see details on 3 star below) and place some red objects here. In the NW place three Chinese coins tied in triangle with red ribbon.

If you look at all the information below you will find more alternatives for all the compass sectors without having to buy anything.

### So what is flying star (Xuan Kong)?

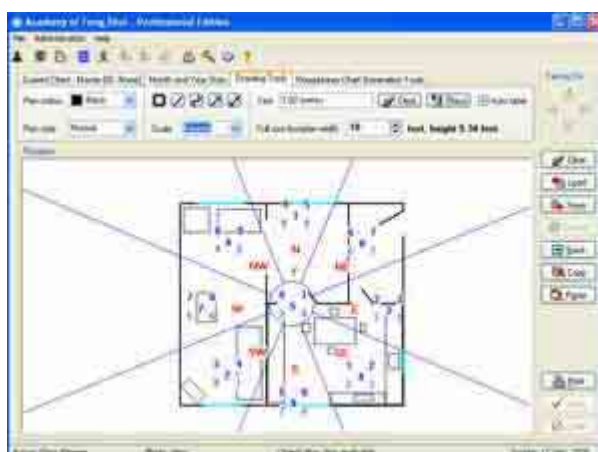
Flying star (Xuan Kong) Feng Shui is the most powerful form that most professional Practitioners use; it has absolutely nothing to do with astrology. It is an analysis of the five elements, land formations and star combinations that occupy your building. Each Chinese New Year these annual stars change, bringing good and bad energy.

Every year and month we give free accurate information on how you can suppress or enhance the sectors of your home or office. Every building throughout the world will have these changing annual stars and you will need to take into account their ability to cause harm ranging from, sickness, wealth problems, legal problems, gossip, relationship problems and just overall bad luck and of course their ability to give auspicious good luck in wealth, health, romance, education and overall good well being. Unless a good star is activated it is of no benefit to you so follow our advice carefully.

***“Why can't life's problems hit us when we're eighteen and we know everything already”***

### Sample of a Flying Star chart (natal chart)

**Generated with our Professional Feng Shui software. This chart below does not just focus on annual and monthly stars but also your fixed stars that are hundreds of times more powerful.**



**2009 is the 4706<sup>th</sup> year of the Chinese calendar.**

In China, the solar calendar of the Ji Chow (Yin Earth Ox) year starts on 4<sup>th</sup> February 2009 at 00.51. In the UK, the new solar year also starts on 4<sup>th</sup> February 2009 at 16.51. In California USA it will start 4<sup>th</sup> February 2009 at 08.51 and if you live in Barcelona you would place your cures at 17.51 on February 4<sup>th</sup> 2009. You can find a page on world times for the solar and lunar Chinese New Years to avoid any confusion, **World times Chinese New Year**

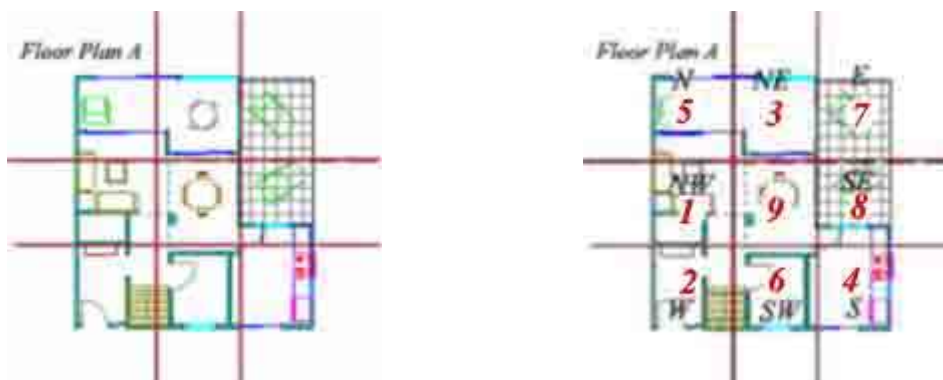
- The first day of the Hsia (solar) calendar is February 4<sup>th</sup> 2009, this is the day you would place your Feng Shui cures and enhancers.
- The Yin Earth Ox year ends February 3<sup>rd</sup> 2010.
- Chinese New Year falls on January 26<sup>th</sup> 2009 (Lunar calendar). This is the date you celebrate the Chinese New Year with **Ang Pow**, fireworks **Talismans** etc and not the date you use to place cures and enhancers in Feng Shui. For more details on **2009 Chinese New year click here**.

### HOW TO FIND THE 2009 COMPASS SECTORS WITHIN YOUR HOME OR OFFICE

**Firstly**, you need a floor plan of your home or office. This can be hand drawn but it should be more or less to scale but don't worry if it is not, it will give you a good idea either way. Define all the interior walls that indicate the different rooms. You can actually do your own floor plan within our Feng Shui software which makes it very easy.

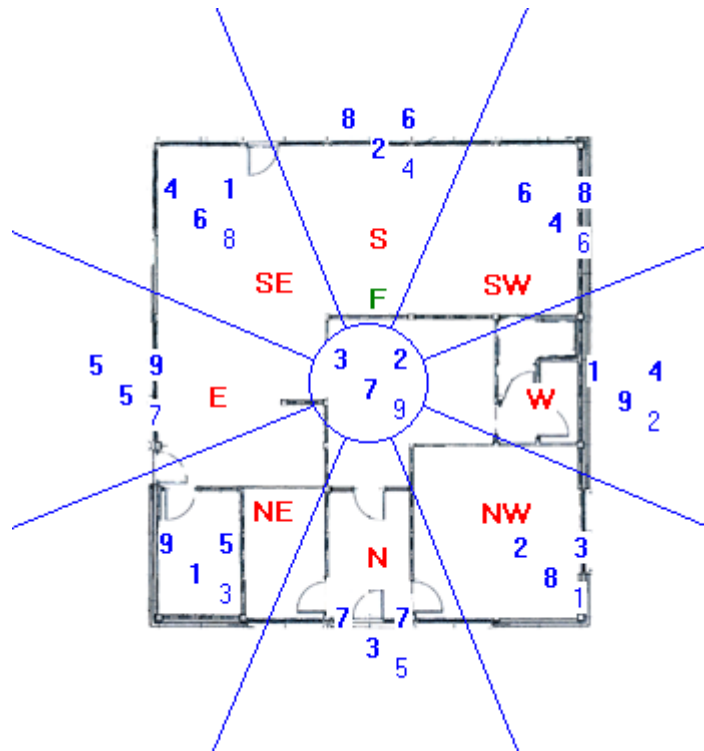
**Secondly**, you need to divide your floor plan into 9 grids or wedges in proportion as shown below. Next, you need to know the compass direction of your home or office. If you need help taking **compass readings please visit this page**.

Once you have your compass readings; you will know which wall is in which direction and you can then overlay the year's Lo Shu grid (annual stars) according to the eight magnetic directions. So in 2009 you will see from below that the #5 star falls into the north area for this home which is a bedroom and this will cause many problems if not attended too.



The chart below is for a house facing 181 degrees south 2 (Wu) built in 1999. This chart below was created with our **Feng Shui software**. The top left numbers is called the mountain star and affects health and well being, the top right number is called the facing star which affects wealth, the middle number is called the period number and comes from the year the home was built. The bottom right number is the 2009 flying star. At a glance you can see where all the annual stars are along with mountain and facing etc and the reason why the software has become the industry standard in Feng Shui.

This is why I do not want to know any personal details on a client that I consult for as these numbers (along with land formations around the home) tell me everything about health, wealth, career and every part of their life.



*“Every time you think you’ve graduate from the school of experience, somebody thinks up a new lesson”*

#### The 2009 Annual Feng Shui Afflictions:

**The Three Killings** - is a direct translation from the Chinese ‘San Sha’. This yearly affliction is mainly in the east (52.5° to 127.5°). In 2009 the east is severely afflicted with the three killings and the inauspicious annual #7 red flying star so it is imperative that you do not undertake any form of noisy renovations or re-decorative work in this part of your house or office between February 4<sup>th</sup> 2009 and February 3<sup>rd</sup> 2010. Nor should you disturb the ground by digging holes, building foundations or conduct any maintenance work with any noisy equipment in this area inside or outside your property or garden. Once disturbed, this affliction will bring about three types of misfortunes – financial loss, sickness and arguments. This is the worst out of all the annual afflictions and in our home and business we take this very seriously as in our 28 years experience with Feng Shui we have seen some pretty nasty events from this energy when disturbed. In fact in 2008 I have seen at least four instances of business going into receivership within 2-3 months because this area was disturbed by renovation or extensions of existing building.

Apart from not disturbing its ground, there are two other rules you should follow regarding the Three Killings. Firstly, if you are moving your desk around this year, never sit with your back to this direction (east). Secondly, it is better to face (east) this direction, especially if this is one of your four favourable personal directions.

Because I have part of my kitchen (in particular my oven which in Feng Shui is very important) in the east I shall definitely be using cures and one that is a complex and an extremely powerful cure in 2009 and can only be used in certain years is by placing a water coloured blue Buddha statue and he must hold a ru yi and a wealth ingot. Buddha comes standard in our **2009 cures kit** with full instructions for placement.

If your front door faces the east in 2009, place a pair of Fu Dogs (not metal ones) just inside the house looking outwards as protective guardians for the year.

If you have to carry out work or emergency repairs in the east place a six hollow metal rod wind chime between the building and where the work is being carried out and ideally you

should contact a professional Feng Shui Practitioner to select an auspicious date to start the work or you can use our Tong Shu software.

**Tai Sui (The Grand Duke of Jupiter)** resides between 22.5° - 37.5° northeast. Do not take this affliction lightly. Do not disturb the ground of this area at all costs. Northeast facing properties with front doors to the northeast must be careful not to allow the doors to slam and do not renovate or dig in this part for 2009.

With the #3 star also visiting the northeast Gen palace in 2009 you have wood meeting earth which is a destructive combination and can cause legal problems, arguments, back stabbing and much more and needs very specific cures and of course when you combine all this destructive energy with the even more destructive Tai Su (Grand Duke) you need the best cure available in the NE in 2009. You need a Master cure - Eight pieces of Jasper Hematite quartz crystal (you should not use normal hematite) along with two larger than average auspicious Chinese Dragon i-ching coins in the northeast, the coins must be placed in certain order. The two Dragon side must face upwards and the yang side must face down as this is a great protector of wealth in 2009. These come standard with all our 2009 cures and enhancers kits.

### **Sui Po (The year breaker)**

Sui Po year breaker occupies the division directly opposite Tai Sui Grand Duke, which for 2009 is southwest (202.5 – 217.5). You should treat this area with the same respect as the other annual afflictions with no groundbreaking work, renovations or any noisy activities. If disturbed this area can and normally will cause immediate health problems especially for the elderly so please be very careful. If you have to carry out work or emergency repairs in the southwest place a six hollow metal rod wind chime between the building and where the work is being carried out and ideally you should contact a professional Practitioner to select an auspicious date to start the work.

**The annual five yellow** has flown to the north this year and because the north is associated with water energy this is not good and the reason why so many cures are needed in 2009. It is highly recommended not to disturb its position here with noisy activities, renovations or maintenance work. Houses with gardens or driveways in the north of the property should avoid disturbing the ground with major digging or building work. When disturbed, the Five Yellow can bring disaster, sickness, lawsuit and major loss of wealth.

Please do not start worrying if your bedroom or office are located in the north, just start preparing to place your 2009 cures and enhancers kit to ensure a trouble free year, and of course make sure you sign up for our **free monthly newsletter** so you are kept up to date with the monthly flying stars giving you even more control of your destiny. To give you even better control is by using our advanced **Feng Shui software** as this gives advanced analysis of every home or office facing any direction in any part of the world, I know I keep recommending this software but there is really nothing like it in the world.

### **How far do we take the advice we give?**

My main door falls in the northeast and we will be using our south door to enter and leave the home in 2009, it will be a little inconvenient for us but it really does make a big difference and

this year we need as much wind on our back as we can muster. We will also be placing all the 2009 cures in the northeast to help dissipate the negative energy that is here for the year. Am I concerned about the NE this year? Not at all, having good Feng Shui is actually being aware of potential dangers and making allowances and placing cures, you can and will avoid many problems.

If you are moving furniture around this year, especially your work desk, it is vital that you must never sit facing this 15° sector (northeast). If you confront Tai Sui, you will experience defeat; demotion, loss and any venture will be met with obstacles. Instead, sit with your back to the northeast and he will support you. Avoidance is the best cure.

The traditional Chinese method is to place a Pi Yao or dragon headed tortoise in the

northeast sector of your home or office facing southwest to appease Tai Sui. Use a compass and take the reading from the middle of the home to place the Pi Yao or dragon headed tortoise accurately to face the 15° radius southwest.

If you have to carry out work or emergency repairs in the northeast place a six hollow metal rod wind chime between the building and where the work is being carried out and ideally you should contact a professional Feng Shui Practitioner to select an auspicious date to start the work.

### **How far do we take this no digging or no noisy equipment?**

What if your garden is in the east, northeast or north? Does this mean no cutting the lawn or cutting back the trees with a noisy hedge trimmer in 2009? Of course you have to do these jobs and if you cannot avoid building work or digging, use the following rules to reduce any harm that may result. In 2008 we had to replace our large driveway that fell in the north, northwest and northeast and whilst some of these areas were affected 2008 was the best year to do the work and if we left it till 2009 it would have caused us any problems, we employed extra builders (6 in total) to ensure the work was done over 6 days as even the monthly stars can have an influence. With placing all the cures in 2008 and also placing a six rod wind chime in the NW we had no problems at all.

- Place a six-rod metal wind chime between your house and building work whilst the work is being done.
- Start trimming or mowing from a different corner of the garden. Let us say your garden is in the north of the property. You should remember to start your garden work from the southeast or northwest corner of the garden as this carries an auspicious energy in 2009.
- The simple thing to remember is **AVOID** doing heavy work here and no digging or breaking ground, I have seen too many times some nasty repercussions from disturbing these afflictions in a year.

### **2009 Annual Flying Stars:**

The analysis of the annual flying stars can only be conducted from a general point of view offering indications as to the influences of the stars in the respective palaces for the year.

How each sector affects the wealth and health aspects of the residents depends greatly on the quality and combination of the 'facing' and 'sitting' stars of the property's natal chart. If you have had a consultation by **Michael** he will be able to advise you better for 2009 or if you have a copy of our Feng Shui software it will show you where all your wealth areas are.

Please make sure you read all the report below as you will need to make the most of 2009, it may appear that 2009 will not be a great year but believe me just following this advice can make 2009 a good year. The southeast is very auspicious and if you placed a lottery ticket in the SE you will increase your chances. The lottery ticket below was created with an individual's own unique lottery numbers taken from their birth date and just by placing it in the SE can increase the chances of a win tremendously.



**Kan 1 White** ☵ 坎 In 2009, Kan trigram is in the northwest.

Kan #1 is a water element. In the physical body it is the ear. Internal organ it is the kidneys and it is also blood. It also affects career and luck.

Kan water #1 (tan Lang) has flown into the northwest location for 2009 and the northwest is considered a metal energy and from a five element aspect this is a nice relationship with metal feeding water. This can very good for the eldest male in the home and a good combination in business. Whilst the energy is very good special cures and enhancers are needed in the NW to enhance and protect your wealth and business especially for the eldest male (Patriarch) as the NW is a Chien Trigram which can affect the male head of a family or home. Check outside the NW of your home for any poison arrows pointing towards it, if there are hang a ba gua mirror outside pointing towards the offending object. Relationships and romance can also be very good in these areas once activated.

If you activate certain areas of the home it can bring in new opportunities, gains in financial investments, academic achievements and also romance and relationships as peach blossom is particularly good in 2009. The intensity of these attributes will differ in varying degrees according to the influence of the visiting monthly stars.

If the NW is a bedroom, office, study lounge or other important room you should place a wealth protection trinity talisman (San Bao – three jewels) which is a special arrangement of three i-ching coins and you should also place the annual Wealth, protection & romance amulet for 2009 (Cai xiu) both of these powerful cures and enhancers are very important in 2009 and comes standard in all our **2009 cures and enhancers kit**.

Blue would be a good colour scheme for the room in the NW in 2009. Blue can also be used in beddings, throw-overs, lampshades, pillow covers etc. If you have a bed located in this area, remember to place a brass wu-lou beside the bed. Avoid fire colours like red in the NW and also candles.

#### Summary for year 2009:

The best months are February, April, July, September and November.

Take extra care in the months of March, May, June and December and check back here to further analyse these months.

#### Enhancement summary and advice.

- A brass Wu-Lou would be good for a bedroom that falls into the northwest along with blue, black, grey or charcoal colours. This is especially so if you are not in good health and if you cannot buy a wu lou place a heavy round object close to your bed but avoid candles or colours red, pink, purple or any fire colours.

- Place a wealth protection trinity talisman (San Bao – three jewels); this is so important in 2009 and if you cannot buy one, use three Chinese coins in a triangle on a desk/furniture etc, go to our **2009 cures kit** for details on what they look like.
- Avoid candles or fire colours like red, pink, purple, orange or burgundy in the northwest in 2009, blues, blacks, grey or charcoal are good colours to use.
- Place an annual Wealth, protection & romance amulet in the NW. Go to our **2009 cures kit** for details on what they look like.
- Metal objects are good to place in the NW in 2009.
- If the eldest male is weak and/or unhealthy be careful if extending or refurbishing the NW of your home or office in 2009, it could cause them problems.
- Naturally not as powerful but round metal shapes are an alternative to using Feng Shui items but avoid sharp or menacing looking metal objects.

**Kun 2 Black** 坤 In 2009, the Kun 2 Black (Ju Men) visits the west

The west in 2009 is not a very nice area although with the placement of the cures and enhancers we can actually receive some benefit (not much but some is better than none) from the #2 star which is very rare. This is because the #2 earth star visits the #7 metal star (west) so the element relationship is harmonious although both stars are inauspicious. If your bedroom, office, lounge or other important room is located in the west and you are unable to move out please read this section carefully.

If the west of your home or office is a bathroom, utility room, guest bedroom or other less important room do not panic this is great news for you, and for my home this is my bedroom and I know once I have placed my cures and enhancers it should not cause us any problems.

If your front door, bedroom, office, lounge or other well-used room is located in the west this will inevitably activate its malicious effects, so read on...

We have the #2 star visiting the west #7 palace and when we see 2 & 7 together the potential of fires is strong so please make sure you check or fit smoke alarms and any suspect electrical wiring should be checked, please remember prevention is the best cure.

This star affects the health of those under its influence bringing with it wealth problems, sickness, disease, bad luck, stress, stomach and digestive problems, bloated feeling, gossip, back stabbing, family harmony and distress. This is especially so for people who are a Gua #1, 3 or 4. Check on this page if you do not know your Gua number **eightmansions.htm** or if you have our software you can calculate your Gua and best directions.

The 2 Black in Period 8 is an untimely star and hence its influence will be of a negative nature.

You must place a salt water cure, Wu Lou and six Chinese coins tied with red ribbon, metal singing bowl and also place more round metal decorative objects (provided they are not menacing looking, round shape metal is good) to dissipate its negative influence in the west corner of your home or room. Avoid triangular or sharp shapes in this area.

A statue of Tsai Shen Yeh (God of wealth) in a gold colour is very effective at not only reducing the bad earth but by also protecting your wealth for the year. Make sure there are no red items, bright lights or burning candles in this area. Do not worry if you have these colours already just introduce colours like white, silver, gold or copper in the way of

a floor mat, cushions, throws, tablecloth or such like. If you have a main door that falls in west in 2009 you would be advised to hang a Ba Gua mirror outside to deflect the negative energy.

Ladies expecting their first born should try and avoid using this bedroom. If there is no choice, try to use a good (southeast, northwest or southwest) sector of the room and implement the necessary cures. You should also sleep with your crown of your head in your personal Tien Yi direction.

If you cannot avoid using this room or this corner of the room, place a brass Wu-Lou beside your bed. The brass Wu-Lou (also known as a calabash) gives elemental support to the west (metal) and also symbolises good health and dissipates the negative energy of the #2 star. Because the west is associated with the youngest daughter of the home the youngest female member of the home or business can be affected so make sure if she sleeps, works or spends a lot of time here all cures are placed. Be very careful in June 2009 as the west is at its worst then.

More importantly, do not decorate the west room with red colour or triangle shapes items and most important avoid burning candles or leaving bright fiery coloured lights on for too long during the year.

The most important cures to place in 2009 in the west are the salt water cure and six Chinese coins tied with red ribbon and why they come standard in all our **2009 cures and enhancers kit**.

Now having given you all this bad news, I will now give some hope for those who are Gua 9 or 2 as this combination whilst on the whole is very bad it can be good for them in wealth and career, you will still need to place the recommended cures as detailed here but the effects of the #2 black will not be bad for you and can even give you positive results.

#### **Summary for year 2009:**

Do not activate this area with loud noises, keep quiet and avoid building work or refurbishment although it is not too bad. Do not use the fire element or colours red, pink or purple. Keep doors closed. Place a Wu Lou, salt water cure, gold Toad, wealth ingot and six coins here along with metal ornaments. Use colours white, silver, gold or copper.

Better months are January, May, August, October and December.

Take extra care in the months of February, April, June, July and September.

#### **Remedies**

- Hang six Chinese coins tied in red ribbon.
- Place a salt water cure.
- You do not need all Dragons and bells, you can use any metal ornament as long as it is not sharp or aggressive looking, and believe it or not a good cure is a round metal dog bowl or weight lifters weights.
- A brass wealth ingot is good for protecting wealth.
- Place a gold coloured three legged Toad with an i-ching coin underneath.
- Place a Wu Lou and/or other metal ornaments to dissipate the negative earth.
- A metal singing bowl is very good as is a stainless steel Dog bowl.
- Avoid using red colour in this room and refrain from displaying triangle shape or fiery pictures.

- Avoid candles or bright lights at all costs. Check or upgrade smoke alarms and other fire prevention methods.
- Naturally not as powerful but round metal shapes are an alternative to using Feng Shui items but avoid sharp or menacing looking metal objects.

**Chen 3 Jade** 三 震 In 2009, the sound of Lu Chun #3 Jade can be heard in the northeast palace. Please read this section very carefully as it severely afflicted in 2009.

The northeast is the worst area in 2009 and you must be aware of possible theft, arguments, disputes, hot tempers, loss of wealth and legal problems especially if you have a main door or important room in the northeast. Those of you with a youngest son also need to take note and do not start worrying, with the cures and enhancers in place you will avoid many problems, my main door is in the northeast and I am not concerned one bit although eleven years ago I had the same combination and I ignored it and it caused me many problems, so if there was ever a lesson learned, this was it for me.

Try and keep the NE of your home as quiet as possible and avoid building work or renovations in the NE in 2009. If you think it is bad enough having the #3 star in the NE it is also marred with Tai Sui Grand Duke so be prepared and read on as it can seriously affect your wealth...

To remedy its effects use red decorative objects, candles, lamps and lights. A nice simple cure is a red (fire colour) floor mat or a table lamp with a red shade. Do not use metal (metal colour is OK) to control this energy for you will aggravate it, restricting the beneficial influence brought by auspicious monthly stars in certain months and magnify its negative influence.

Do not have a water feature inside here unless a professional Feng Shui Practitioner has advised you.

Some books or websites you may have read will tell you the #3 wood star can be a good star in period 8 (2004 – 2024), in our opinion it is still an unpredictable star and you should not try and activate it unless you are qualified to do so or you have used our Feng Shui software. It will become more usable towards the mid to later part of the 20-year period 8 cycle.

I have seen websites and books even recommending placing water here for the annual #3 star, do this and you could invite arguments, wealth problems, divorce and legal problems without taking into account your land formations, period, mountain and water stars, please be very careful. I am not saying these people are wrong to recommend placing water; I am saying that you should take into account the bigger picture before using such a powerful enhancer on a known unbalanced star at this particular time in the twenty year cycle. I have used water many times on this star with good results but have also used water and got less desired results, it really depends on other occupying stars, land formations and also the gua Trigram of the occupants.

Ensure that documents signed during the year are checked through thoroughly before committing oneself. The influence of a Chen 3 in Period 8 denotes possible arguments, disagreement, back stabbing and in extreme cases, this can result in lawsuits, either as a petitioner or a defendant and also causes loss of wealth. Either case there will be a loss of time, energy and wealth, so please be careful during 2009 especially if you have a main door in the northeast and if you can, try and use another door to enter and leave. You should also hang a Ba Gua mirror with a Chinese i-ching coin on the rear for added protection in 2009. The reason why it is very bad in 2009 is because when the #3 star flies into the northeast Ken palace which is an earth element, wood and earth are in conflict causing many problems.

Surely I am over exaggerating the problem? Not at all, my main door falls into the northeast and I have had a new gate made so we can enter and leave through the south rear door in 2009, this is quite inconvenient for us but I will not take any chances and we

will be placing every single cure and enhancer that I recommend on this site.

An imperative cure and slight enhancer to place in 2009 is a cure called a Master cure - (Shi Yao) This cure is only known to a few Masters and clients are normally charged a lot of money to receive the formula as it changes each year and it harmonises all the elements that are out of sync in 2009. Eight pieces of Jasper Hematite (Master Protector Crystal) quartz crystal along with two larger than average auspicious Chinese metal Dragon i-ching coins in the northeast, the coins must be placed in a certain order. The two Dragon sides must face upwards and the yang side must face down as this is a great protector of wealth in 2009.

The Master cure also negates the negative qualities of the #3 wood star bringing harmony and balance and acutely some positive energy can come from this. This cure is vital if you have a bedroom in the northeast or other important room like office, lounge etc. Those with a main door in the NE should avoid any dangerous sports in 2009 as accidents that cause broken bones are likely.

Another very potent and more traditional Chinese protector is a statue of a Ru Yi with a wealth knot and pumpkin and as a large percentage of our clients are Chinese, Malaysian, Singaporean etc we had these specially made for us in China and the quality is absolutely stunning and a cure that I will be placing in the NE in 2009.

An image or actual Chinese Lou Pan compass is also used and the reason why we included this along with the Master cure standard in all of our **2009 cures and enhancers kit**.

**Do not take this affliction lightly.** Do not disturb the ground of this area at all costs. Northeast facing properties with front doors to the northeast must be careful not to allow the doors to slam and do not renovate or dig in the northeast, east and southwest in 2009.

Please remember that **Tai Sui (The Grand Duke of Jupiter)** resides between 22.5° - 37.5° northeast in 2009. It is vital that you must never sit facing this 15° sector. If you confront him, you will experience defeat, demotion, loss and obstacles. Instead, sit with your back to this sector and he will support you.

Do not undertake any form of noisy renovations or re-decorative work in this part of your house or office between February 4<sup>th</sup> 2009 and February 3<sup>rd</sup> 2010. Nor should you disturb the ground by digging holes, building foundations or conduct any maintenance work with any noisy equipment in this area inside or outside your property or garden. Once disturbed, this affliction will bring about three types of misfortunes – financial loss, sickness and arguments. This is the worst out of all the annual afflictions and in our home and business we take this very seriously as in our 28 years experience with Feng Shui we have seen some pretty nasty events from this energy when disturbed and it has even caused many problems many years ago.

Strict advice for 2009 is that if your property faces or has a main door in the northeast you must not renovate the building in 2009 especially in the west, northeast and north.

#### **To calm interactions:**

- Place a light in the northeast If you have a choice, a lamp with a wooden stand and a peach/red shade is better.
- Do not hang wind chimes of any material in the NE in 2009, especially metal wind chimes as it will worsen matters.
- During hot summer months, make sure the fan is not located in the northeast.
- Take extra security measures for the whole home or business during 2009 and check smoke alarms.
- Check through everything before signing documents if office is in the northeast.

- Try and keep this area quiet and do not disturb with loud noises.
- If you had last years cures and enhancers kits place your red Kwan Yin statue here.
- Try not to let children or noisy animals play in the northeast.
- Beware of backstabbing, as sometimes it is unseen and behind your back and also from someone you thought you knew quite well.
- Invest in a good compass and avoid placing machines like a TV, fan, fax machine, computer or any machines that creates noise or vibration in the NE of any room.
- Most important is not to disturb the ground inside or out.

**Sun 4 Green** ☰ ☱ Sun 4 Green romance star sits in the south of the Lo Shu square in 2009.

The Sun wood 4 occupies the fiery south palace in 2009 and this is a conditional star but is auspicious in Period 8 (2004 – 2024). It governs romance, career, travel, creative, academic and artistic talents, wisdom and intelligence as well as self-development. With the wood of the #4 star combined with the fire of the #9 this is a glowing relationship and we can expect a lovely energy from here.

If you want to enhance this wonderful star you must use a very special enhancer called a Sheng Chi enhancer which is a very special arrangement of crystals and Chinese coins and a superb enhancer not just for romance but also for career and business. You place four pieces of deep smoky quartz crystal along a piece of Sodalite quartz along with four very auspicious i-ching coins in the south, this cure is extremely important in 2009 and can only be used in certain years.

This powerful enhancer is a very little known talisman and the reason it is called Sheng Chi is because it creates a cycle of life with the #4 wood star enhancing the #9 fire star, the #9 star enhances the strong earth of the smoky quartz and this enhances the metal of the i-ching coins which in turn enhances the water stone sodalite and then returning to the #4 wood star for the cycle to be complete, the whole cure then needs to have a thought form charm placed inside and positively empowered with sheng chi energy (this is already applied to the one's that we sell). I really do love this cure and enhancer especially as it is a traditional enhancer and not the usual red heart shape pillow on bed that most websites recommend.

This cure and enhancer when used is also a manifestation enhancer so it is good to place an image close to the crystals that represents everything you want to achieve in life, an example to some would be a picture of a beautiful home that you desire, a man or female that you admire, a car like a Ferrari or Mini, the number of children you would like, I think you are getting the picture by now, just create a dream board with all that you desire pinned to it or draw the image or you can even download some images from [www.google.com](http://www.google.com) this really is a very powerful way of manifesting your dreams and it really does work, remember to place the image by the sheng chi enhancer.

The crystal's should be cleansed of negative energy and empowered with positive Sheng Ch'i energy in moonlight or sun (this has already carried out to the one's that we sell) which is said to bring wealth, health and good luck. Smoky Quartz when placed with sodalite and when placed in the south is the crystal that possesses the strongest symbol of life and love and enhances romance, career and creativity. If you cannot buy from our store go to your local quartz crystal shop and ask for 4 pieces of deep smoky quartz crystal around one inch, one piece of deep blue sodalite and four auspicious i-ching coins. This cure and enhancer is so important in 2009 and why it comes standard in all our **2009 cures and enhancers kit**.

Whilst this star is very auspicious without cures this 4 star can bring both wanted and unwanted romantic opportunities to the household if the cures are not put in place. Having a door in the south with the cures (sheng chi) can bring in new opportunities and lots of travel.

Do not use fire or metal in this area or colours white, silver. Do not worry if you have these colours already just introduce colours blue or black in the way of a floor mat, cushions, tablecloth or such like.

As in every star, the 4 Green has a positive and negative aspect to its nature. Although a favourable annual star in 2009, it can also be affected by the presence of an unfavourable monthly star and when it does, it denotes betrayal, heartbreaks, scandals and humiliation in affairs of the heart. The affected months are April, May, June and September. So keep an eye on our monthly updates. Treat this area as your relationship and creativity area for 2009 it can be very good for you. If the south is an important area like a main door, lounge bedroom etc please keep it is clean and clutter free as possible, believe me it makes so much difference. I am looking forward to the #4 star as it visits my main office in 2009 which is great news for my type of business. Business's likes jewellers, metal workers or similar must make sure they place the sheng chi cure.

Couples with a bedroom in this location can also enjoy good relationships. There may also be a chance of producing intelligent children. If you want to enhance this further place a statue of Kwan Yin in the south or southeast part of your bedroom.

If you want to enhance fertility you can display peanuts in shells (groundnuts) or any seed products like black or red melon seeds (Gua zi). In Mandarin, peanuts are called 'hua-sheng' and for the Chinese this word is onomatopoeic in that the sound of it means the birth of many children. You should display them anywhere in the bedroom and of course be careful if anyone in the home suffers with nut allergies.

**Summary for year:** With the above cures and enhancers in place you should reap the rewards from this area especially if you are looking to enhance relationships or creativity; this area is very good for writers, artists, students and anyone that is related to the travel, crystal, alternative, health industry.

Avoid fire element and colours red, pink or purple. Good colours are blue or black. If you wish to enhance areas of creativity and academic achievements, place or hang moving objects to enhance the Ch'i of this sector, do not use wind chimes. Keep area semi active with windows occasionally open. Do not use metal items here especially wind chimes from the 2009 cures. Spend time in the south if you want to enhance romance, creativity or academic pursuits.

#### **Cures and enhancers summary:**

- Use blue in your décor if this is your office or bedroom.
- Make sure you remove all the metal cures from the 2008 cures and enhancers kit from the south as this will cause many relationship problems if left.
- For office and studies, place a task light and a crystal globe on the work desks. Blue items can be added on the desk e.g. blue paper, blue books etc
- Avoid displaying too much metal objects here especially large heavy ornaments.
- Fresh flowers or small pots of green leafy or flowering plants can be displayed in this spot of the house to lift the qi. Blue or green flowers are a good choice.
- If you have mandarin Ducks this is a good area to have them and any other symbols of romance like hugging couples etc.
- Place photos of loved ones or images of love to enhance relationships or attract new love. This can done with photos, paintings or statues, make sure there is

always a pair in the image.

- For romance a Dragon headed Tortoise or Mandarin Ducks is very good

**The 5 Yellow** In 2009, the annual 5 Yellow Lian Zhen star of tragedy is located in the north palace.

As you may know, I like to try and deliver bad news as positive as I can and firmly believe the power of the mind is as powerful as Feng Shui and providing you give the correct software to the brain you can turn bad into good. We have proved that many years over and last year 2008 I had my office where the #5 star was, along with sui po and the three killings which is the worst possible combination and with all the cures and enhancers placed in 2008 I escaped without any real problems and yet again we had a record breaking year in 2008 with so many new opportunities I could not cope with them all. However, I did place many cures in the south in 2008 and because I spent a lot of time away in 2008 doing more than normal consultations and teaching than ever before, avoidance of negative areas is always best and because I have now hit 50 I need to take more care apparently, I feel as good today as I did twenty years ago just not as much hair, oh a few more lines on my face, oh and my right knee aches a little, oh and my waistline is starting to expand a little, apart from that I feel fantastic, okay my mind is as good as it was 20 years ago. Be positive, you can avoid many problems and read this information a few times over so you are prepared for 2009.

This year we have the evil #5 star visiting the north (Kan #1) where we see earth meeting water which is destructive and needs cures otherwise it will cause bad luck and wealth losses.

The advice I have given over the last ten years always comes from the heart and I try to make sure that those who do not use traditional Chinese cures like a **salt water cure** or six Chinese coins tied together with ribbon that there are always alternatives. Use plenty of good quality metal in the north this year and make sure you cleanse all your cures from previous years. Good shapes are items made from metal that are round, even a stainless steel dog bowl is a good cure.

Do not to disturb its position here with noisy activities, renovations or maintenance work. Houses with gardens to this corner of the property should avoid disturbing the ground with major digging or building work in the north in 2009.

The 5 Yellow also called '*Wu Huang or Lian Zhen*' in Chinese, is one of the bad annual afflictions. It is a very volatile star. It has no gender and no trigram and is highly dangerous when disturbed. When disturbed, its malevolent influence brings disaster, sickness, lawsuits and major loss of wealth. Do be careful with it. Stillness together with metal cures can keep its negative influences at bay.

As we have so many negative afflictions in the north with the annual #5 yellow you must place a salt water cure, six rod wind chime, Wu Lou and six Chinese coins tied with red ribbon and also place more metal decorative objects (provided they are not menacing looking, round shape metal is good) to dissipate its negative. Even a pendulum chiming clock in the north is very good and whilst this contradicts what I said about keeping the area quiet, the chiming sound of the clock is actually as important as the moving metal of the pendulum. In the old days they would have had someone striking a gong every 15 to 60 minutes. All these cures are essential and why we have included three of them as standard in all our **2009 cures and enhancers kit**.

Another extremely imperative cure in 2009 and because the annual afflictions are so bad in the north, is to place a brass wu lou or gold coloured gourd in the north of your home or office to avoid severe problems. This cure really is one of the most protective cures you can use and also a powerful enhancer, for protection against legal problems, arguments, disputes and loss of wealth. An alternative cure is place some very heavy good quality round metal objects in the north in 2009, I do not give this advice so you have to buy from us, most of these cures and enhancers I recommend you can put together yourself.

You MUST NEVER disturb the north inside or out by lots of drilling or knocking activities. So please be careful when you hang your metal six rod wind chime to control its influence in the north sector of your house. You should also place a Ba Gua mirror especially if you have a main door here, I will be renewing mine in the north on February 4<sup>th</sup> without fail and this year I will use the wealth protector ba gua with the Chinese i-ching on the back.

You must **not** place red objects, bright lights, candles or red coloured furnishing in the north. Do not worry if you have these colours already just introduce colours white, silver, gold or copper in the way of a floor mat, cushions, throws, tablecloth or such like. You can also use dark blue or black if you prefer.

If your bathroom, cloakroom, en-suite, guest room or a large cupboard is located here, this is good for you this year, because these areas are not used much and therefore the negative power is not activated, I would still place the cures though regardless of what room is located in the north.

It helps if you can do a natal chart of all the other flying stars in your home as there is much more you can do to protect yourself, if you know how to do a flying star chart it is worth doing or maybe consider buying our specialist **Feng Shui software**, it is worth every penny and can save you from many disasters, you will not find any better than this software as it not just tells you where the problems are, it tells you how to correct them or enhance the good areas.

**Summary:** Do not activate the north with loud noises, keep quiet and avoid at all costs building work or refurbishment. Do not use the fire element or colours red, pink or purple. Keep doors closed. Place a six-rod wind chime, Wu Lou, 6 Dragon Pagoda, salt water cure and six coins here along with metal ornaments. Use colours white, silver, gold or copper. I will repeat this part, as it is so important, please keep the north of your home or office quiet, avoid redecoration and building work in 2009 in the north part of your home or office and when you hang your wind chime try not to make so much noise with hammers etc, don't worry about the noise the wind chime makes, this is all part of the cure, so when it is in place try and remember to knock it a few times a day.

#### **Summary for year 2009:**

Take extra care in the months of March, August, October and November.

Every year we put together a powerful cures and enhancers kit and this year it is even better and more powerful than ever and don't just take our word though; **click here** to read hundreds of testimonials that we have had over ten years from every corner of the world.

#### **To calm interactions:**

- Avoid playing loud music in the north of the home or room.
- Do not decorate your room with red or earth colours this year. Grey, blue or white beddings and curtains are good colours to use temporarily.
- Place a salt water cure in the north of the building along with six Chinese coins tied in a row with red ribbon and six hollow metal rod wind chime.
- The six coins in row and salt cure are a crucial cure to place in 2009, please do not forget it.
- Place a Brass Wu-Lou in the north corner of the room if this is your bedroom.
- Metal objects such as six Chinese metal coins tied in a red ribbon and/or a brass Dragon can be placed in this corner too. Do not to use red dragons.
- Do not place red objects, burning candles or triangular shaped furnishing in this sector.

- Most of all, avoid disturbing the north at all costs. Any form of renovations that needs to be done, plan it for another year. It is worth keeping this in mind.
- Tsai Shen Yeh (God of wealth) in a gold colour is very effective at not only reducing the bad earth but by also protecting your wealth for the year in the north.
- Replace or at the very least cleanse your Ba Gua mirror in the north especially if you have a door here.
- If you have a main door in the north make sure you oil the hinges and try not to let it bang shut and oil squeaky hinges.
- If you use a fan or other machines that creates noise or vibration try and avoid placing it in the north part of a room, get yourself a good compass.

**Ch'ien 6 White** ☰ 乾 The star of Heaven Chien 6 White (Wu Qu) sits in the southwest palace in 2009.

6 White is a benevolent money star and as an annual star, its position in the southwest in 2009 is very good for career, wealth, politicians, leaders and anyone involved in the jewellery business, those with a main door, office/study in the southwest will benefit greatly.

This year this #6 star will bring more success for anyone with an office or main door in the southwest.

Those who have main doors or offices in the southwest sector will enjoy excellent business and career success. However, whilst 6 White represents accomplishment, if the #6 annual star is located in a bedroom it can cause problems with the liver and/or legs. If you do have a bedroom in the southwest place some blue cloth such as a rug or duvet covers to dissipate its energy.

An important cure, enhancer and protector in the northwest in 2009 especially if you have a main door, bedroom, office or other important room is to place a six gold ingot charm – This is a little known Master cure and enhancer not only for the #6 flying star but also when the #6 star enters the SW Kun palace causing problems with the eldest women (Matriarch) in the home and also problems with luck, love and relationships. This Master cure is giving ultimate protection and enhancement of wealth making this the perfect enhancer and also protector of wealth, business and relationships in 2009. This is such a nice traditional cure and enhancer. This is a very important protector for the eldest female in the home.

Please remember that **Sui Po** resides between 202.5° - 217.5° southwest in 2009. It is vital that you must not disturb this 15° sector in 2009.

### Summary for year 2009:

Take extra care in the months of February, April, September and November.

Overall this is a nice area and even better if your main door or office is located here, keep area active with windows and doors open. Good colours are earth colours yellow. Place some real quartz crystal here or the hanging faceted sphere type; these are very good for activating the wealth and business side of this nice star.

### Enhancers and cures if needed:

- If this is your bedroom, a shade of blue or black in your furnishing or décor may help with health. A blue painting (not water scene) may also do.
- Place a six ingot cure (**liu chao**) and Dragon & Phoenix amulet (**Lung Huang**) in the SW in 2009; these are very traditional and powerful cures.

- Real quartz crystal is very good in the southwest for 2009 as is faceted crystal spheres.
- Avoid colours red and candles in the SW in 2009

**Tui 7 Red** ☳ ☵ The Lofty Wind of Tui (Po Jun) flies into the east in 2009.

The mischievous 7 red star is a negative influence in Period 8. The trigram Tui is also known as '*Broken Soldier*'. This is a fighting star which cause problems if left alone. When combined with another untimely star, its negative nature denotes assault, deceit, violence and robbery. This year 2009 it falls into the wood element of the east Chen palace which places both stars in severe conflict and can cause many problems if left untreated.

The #7 Red indicates a high risk of burglary, deception, copyright theft, gossip and back stabbing especially in the months of February and August.

If you have a door that is used often in the east or even a window you should be looking to update security, smoke alarms and checking electrics, the next most important cure is placing a Buddha holding wealth an ingot & Ru Yi this is a very old and traditional cure used when the 7 star falls into the east, this is so important to place in 2009.

Another important cure for the east in 2009 is placing a set of Eight I-ching coins tied together with red ribbon. This is a very traditional enhancer for the #7 star, as the 8 coins represent totality and because the centre represents the earth element, the reason you would use the eight coins is because the number eight is earth based and represents wealth combined with the #7 star so a perfect element enhancer in the cycles. These coins represent fame, fortune, wealth and success. They are also a superb cure in the east in 2009 to protect wealth in the months when the #9 flying star enters the east.

You should also hang a Ba Gua mirror with a Chinese i-ching coin on the back for added protection in 2009 but only do so if you have a main door in the east, west or north.

As I have said above please take extra security measures especially if you have a front, back or side door in the east sector. Make sure doors and windows are fastened securely before leaving the house. Do not display valuable items on windowsills, which may attract the interests of passers-by.

It pays to be wise and avoid taking too many risks for there may be unscrupulous people working against you. There are indications of misunderstandings, pressure and business rivalries that could also lead to losses.

The best advice I can give is check or install smoke alarms, check electrics and check the security of windows and doors in the east. As I write this we have just had our security updated and of course we will be placing our cures in the east on February 4<sup>th</sup> 2009.

**Summary:** Keep the east quiet and doors and windows kept closed. Good colours are blue or black. Avoid earth and fire colours and quartz crystals.

#### **Summary for year:**

If you have an office or door in the east be careful of people trying to deceive you, robbery, arguments and loss of wealth, always look at the very small print and be careful as this star normally causes problems with people you know and thought you could trust.

#### **Remedy:**

- You should also use more blue in your decoration. You can introduce the colour with cushions, rugs, bed covers or doormats.
- Do not use anything of fire element or colours red to control it as this may aggravate it.

- Avoid candles at all costs.
- Install or service/upgrade smoke alarms and security systems.
- Do not hang metal wind chimes here.

**Ken 8 White** ☰ ☱ This is the most auspicious governing flying star for the next fifteen years of the lower era of the sexagenarian cycle of the flying stars (Xuan Kong) system and is located in the southeast for 2009, so if you have a main door, office or any other important room in the southeast this is great news for you. It is somewhat spoilt though as the #8 star is associated with earth element and sadly the southeast is a wood element which places the two elements in conflict but we will advise you on how to improve this and make 2009 a good year. Many websites will say that this will cause problems with these two elements clashing, in my opinion we can make this auspicious with certain cures and enhancers that I will talk about soon.

Wealth, fame. Romance, prestige and distinction can be expected especially if you have an office here or a main door, even if you do not we can still activate it. It brings good fortune and exciting times even with the conflict of elements, although you should place cures here if the eldest daughter or youngest son of a home sleep or spend a lot of time in the SE in 2009. Placing the sheng chi cure in the south actually remedies the southeast especially if you have children sleep or spend a lot of time in the southeast; this is included in all our cures and enhancers kits.

If you work with symbols, quartz crystals, crystal balls or hanging faceted crystals are very good for this southeast palace this year. The #8 star also governs relationships so a nice romance enhancer is a pair of rose quartz double hearts or a pair of Mandarin Ducks this year.

Whilst wealth is forecasted in 2009 for the southeast, beware of overworking as this can cause you health problems. The additional work will bring a good income but be careful of your health; in particular stress related resulting in high blood pressure or kidney problems.

One of the most powerful and important cures and enhancers for wealth and business/career in 2009 is placing a statue of a Dragon and Phoenix (Lung Feng Fu) to exact measurements and stature. This must be placed in the southeast in 2009 or placed on the right side of your desk for a male or left side for female. This extremely potent cure and enhancer is for the wealth #8 star and because the #8 star is visiting the southeast which is inherent in wood (Xun) this can cause wealth problems at so many levels of Feng Shui as the SE is also a strong wealth area for the eight aspirations. It can only be used in 2009, 2018, 2027...and because you do not usually see the Dragon & Phoenix together and why it was specifically made for us although it can be used every year thereafter but not in the same location, because this cure is very important for wealth in 2009 we decided to include it standard in all our **2009 cures and enhancers kit**.

Another very important cure and enhancer that is needed with the current economic climate is to place a red statute of Tsai Shen Yeh (God of wealth), it is very effective at enhancing wealth but by also protecting your wealth for the year in the southeast, the statue must be red in colour though and you must not use gold or metal colours, this is supplied standard in our deluxe cures and enhancers kit for 2009.

Do not place heavy metal in the southeast this year, as it will weaken the good earth. Great news if you have your main door here and if you are in an office try and locate your desk in southeast or northwest part of the office.

This is a very strong wealth, success and romance area for 2009 so try and store your important financial papers here like pensions, stock portfolio etc in the southeast. If you use symbolic cures this is where you should place your three-legged Toad facing your Sheng Chi direction for wealth or a pair of rose quartz crystal hearts for romance.

## Summary for year.

Take extra care with health in the months of March, April and November.

### To enhance:

- Hang a faceted crystal sphere in the southeast of the house near the window or door. Hang it above head height and twist now and again.
- The energies of the annual 8 can be activated by human activities. Use this room as frequently as possible unless you have received professional advice against it.
- The red three-legged toad can be placed here. Make sure the toad is facing into the house and not towards the door and the coin is never taken out of his mouth.
- Introduce some fire colours into the southeast to balance the energies, a quick and easy way is using bed covers, rugs, table covers, sofa throws etc.
- If your bedroom is here, you can also place an amethyst or any crystal items in the southeast of the bedroom to further strengthen the earth element of the benevolent 8.
- Place a red Tsai Shen Yeh statue in the southeast to protect wealth in 2009
- This is also a good study area for children. Place a task light and a crystal globe on the desk to enhance concentration.
- A romance enhancer is a pair of rose quartz Mandarin Ducks in the southeast this year.
- Keep area active with open windows and doors (yang energy).
- Keep the area outside and inside the southeast, northwest and southwest as clear clutter free and open as possible, you need to let the auspicious Qi collect here and distribute inside and outside, when this happens it is known as Ming Tang (明堂), this is a collection of Sheng Chi (auspicious energy)

**Li 9 Purple** 離 (You Bi) Li 9 Purple is found in the centre 東南 palace in 2009 and this can cause a mix of good and bad and why the year may seem unsettled although if you place all the cures and enhancers it will not be that bad. Most websites will be predicting doom and gloom in 2009; personally I think there is much you can do to avoid the potential problems that are forecast. The central palace is very influential and why cures and enhancers must be placed in the cardinal and inter-cardinal compass sectors.

The element of the annual #9 star can strengthen the malevolent effects of visiting monthly stars #2 and #5. Hang a set of eight Chinese coins tied together with ribbon here to weaken the undesirable influences of the monthly stars #2 and #5 which will visit in February, May and December. Normally I would recommend a set of six coins in a row but because the #9 is a fire element you need eight to dissipate its energy rather than control it. If you used six coins in a row you would have many problems with legal issues, these come standard in all our **2009 cures and enhancers kit**.

## Summary for year:

Be aware of the negative influences during the February, May and December.

### To enhance:

- Healthy green leafy plants or blue flowering plants such as violets are good for this

area.

- Fresh flowers displayed here will bring positive qi too.
- Symbolic objects such as a wu lou or eight Chinese coins can be placed here all year round to enhance benevolent influence and at the same time dissipate the malevolent influence by the visiting monthly #2 and #5.

Spend as much time as you can reading this report, save it and print it to read at your leisure as it can save you from a lot of problems, you don't have to buy any cures and enhancers and I hope you agree I have always given you alternatives to the traditional cures and enhancers but if you do decide to buy a cures and enhancers kit you should read what some of our clients say about annual cures kits, not only do they offer you protection they enhance the beneficial areas, click on the banner below to read some of the thousands we received over the years.



### Water placement in 2009:

As we entered period 8 (4th February 2004) the use of water outside is critical up until 2024, so a pond outside in the correct area can really work in your favour. You must not unless advised by professional Practitioner place water outside in the north-east up until 2024.

**Outside water in 2009:** Can be placed in the south-west or east, this is your primary and secondary wealth areas for the next sixteen years. In 2009 water outside in the southwest is very good as not only is it a secondary wealth area it is also a nice annual star and if you know what your natal chart (flying star chart) is and you also have a good facing star this would make a very powerful combination for wealth. If you do not know what your natal chart is or do not know how to create one take a look at our software as it does all the work for you, [follow this link](#).

**Indoor water for 2009:** You can use a moving water feature or aquarium in the southeast or northwest in 2009. Do not use water in any other compass sectors unless you have had a professional Feng Shui consultation or use our **Feng Shui software**.

If you are using water you must make sure the water is clean and flowing and never allow it to become stagnant. Water is a very powerful enhancer and is the essence of Feng Shui (Shui meaning water) the Ch'i is caught by the water and cleansed (providing the water is clean) and distributed throughout your property. If you look on our [resource pages](#) you will find more detailed information on water placement for 2009 and beyond.

Whilst the methods above are considered safe, there are many exceptions to the placement of water and as Master Practitioners and **teachers** we use many more methods of water placement for wealth, education and relationship, these methods whilst extremely powerful can only be used with expert guidance and a full analysis of your property and land formations, please visit [this link](#) for more details of an on-line consultation or home/business visit. Or consider our powerful **Feng Shui software**.



### Salt water cure after 4 weeks.



Every year we receive thousands of e-mails saying how the **salt water cure** changed the energy in their home for the better; this is a very powerful and little known cure and one that we have been using for over twenty years. You should use the salt water cure this year February 4th 2009 in the north & west (**DO NOT REUSE LAST YEARS SALT WATER CURES IF IT IS MORE THAN TWO MONTHS OLD**).

There are many exceptions to be made, the thing to remember with flying stars is, if you have a 5 yellow in a dining room and if it is an open plan home the 5 yellow's power can drift into any other part of the home, think of perfume, if you sprayed some in your bedroom your partner may still be able to smell it downstairs because the smell goes into the air (Ch'i) and drifts around the home, so as general advice it is better to cure than leave to chance.

#### **How to dispose of your old salt water cure?**

You should change your salt water cure every year, why? Because they store an enormous amount of negative energy and moving it causes problems in all parts of a building. The best way is to get a Tupperware type container (margarine tub etc) and place the entire contents salt, water, glass and coins into it, close and seal the lid and throw straight into an outside bin. If you do not have a container pour the water down an outside drain (one at the back of house that leads away from the building) and place the salt/glass and coins into a plastic bag and place in bin. Please do not try and recycle, it is not worth it, this is the main reason we sell ours so cheap to make sure people can easily and cheaply renew them. Last year I saw a few websites selling these for 4-5 times as much as us. As with all our products they are cleansed of all negative energy and empowered with positive energy and the coins also come from a good dynasty making them even more effective.

If you want to be kept up to date with the monthly flying stars click on the link towards the top of the page to join our free monthly newsletter, it is read by over 75.000 Masters, Practitioners and fellow enthusiasts from all over the world.



**Visit the pages below for further details on 2009 Chinese New Year etc.**

**Chinese New Year 2009 \*\* How to make your own Ang Pow \*\* Chinese Talismans for 2009 \*\* Chinese animal predictions for 2009 \*\* Flying star Xuan Kong 2009 \*\* Salt Water cure information\*\* Avoid the fury of the Grand Duke, three killing 2009\*\* Chinese New Year world time converter 2009\*\* 2009 Cures and enhancers kits \*\* How to take a compass reading \*\* How to determine your facing direction \*\* Feng Shui software \*\* Feng Shui resource \*\* 2009 Tong Shu Almanac Software \*\* Feng Shui Blog \*\* Chinese culture \*\***

**Are you really prepared for 2009?**



© Michael Hanna - Feng Shui Store 2009

The below copyright information does not apply to anyone who wants to copy our content or send to a friend or even store on your computer for their own personal use and development. Please feel free to copy and paste or share with as many people you like. The below is intended for the many people who steal our content and claim it to be their own work.

We are more than happy to share our content; all you need to do is give us credit for our hard work and a link back to our website. Contact [michael@fengshuiweb.co.uk](mailto:michael@fengshuiweb.co.uk) for more details.